

A grayscale photograph of a snowmobile rider on a snowy trail. The rider is wearing a helmet and gear, and the snowmobile is kicking up a trail of snow. The background is filled with snow-covered evergreen trees.

Sparkplugs

10

NGK Spark Plugs

Standard Types

Part #	Price (G)	Part #	Price (G)	Part #	Price (G)
BM4A	\$3.95	B6HS	\$3.95	D7EA	\$3.75
BP5ES	\$3.30	BP6HS	\$3.30	DP7EA-9	\$4.10
BP5HS	\$3.75	BP7HS	\$3.30	D8EA	\$4.10
B6L	\$3.95	B8S	\$3.95	D8HA	\$4.25
B7S	\$3.30	C7HSA	\$4.10	D9EA	\$3.75
B6S	\$3.95	C8E	\$4.10	D6EA	\$4.25
BP6ES	\$3.95	C9E	\$3.85		

Resistor Types

Part #	Price (G)	Part #	Price (G)
BPR4HS	\$4.25	BR9ECS	\$12.50
BPR5ES-11	\$4.25	BR9ECS-5	\$12.50
BPR5HS	\$4.25	BR9ES-SOLID	\$4.50
BR6ES	\$4.25	BR9EYA	\$5.50
BPR6ES	\$4.25	BR10ES-SOLID	\$4.60
BPR6HS	\$4.25	BR10ECS	\$12.75
BPR6HSA	\$4.25	BR10EYA	\$5.50
BPR5ES	\$4.25	CR6HSA	\$4.60
BPR7ES	\$4.25	CR7HS	\$3.85
BPR7ES-11	\$3.50	DPR6EA-9	\$4.75
BPR7HS	\$4.25	DPR7EA-9	\$4.75
BPR8ES	\$4.50	DR7EA	\$4.75
BPR9ES	\$4.50	DR7ES	\$4.75
BR7ES	\$4.25	DPR8EA-9	\$4.75
BR7HS	\$4.25	DR8ES	\$4.75
BR8ES-SOLID	\$4.50	DR8HS	\$4.75
BR8EYA	\$5.50	DPR9EA-9	\$4.75
BR8HS	\$4.60	BR9HS	\$4.60

Special Types

Part #	Price (G)	Part #	Price (G)	Part #	Price (G)
BUE	\$3.80	BUH	\$3.75	AB8	\$7.25
BUHX	\$4.50	BUHW	\$5.95	DR8ES-L	\$4.75
J9A	\$3.85	AB6	\$7.50		
ZGR5C	\$4.75	AB7	\$7.68		

"G" Racing

Part #	Price (G)	Part #	Price (G)	Part #	Price (G)
BR8EG	\$9.50	B10EGV	\$11.50	B95EGV	\$11.75

Gold/Palladium "V" Type

Part #	Price (G)
B7HV	\$5.95



Iridium Racing

Part #	Price (G)	Part #	Price (G)
BR8EIX	\$13.95	BR10EIX-SOLID	\$13.95
BR8EIX-SOLID	\$13.95	CR8EIX	\$13.95
BR9EIX-SOLID	\$13.95	CR9EIX	\$13.95
BR10EIX	\$13.95		

Spark Plugs Application Guide

CC	Model	Year	Regular Plug	Premium Plug	Gap
Arctic Cat					
1100	Jaguar	2007	-	CR8EIB-10	0.028
1000	Crossfire	2008-07	BR9EYA	BR9EIX-SOLID	0.028
1000	F1000	2009-07	BR9EYA	BR9EIX-SOLID	0.028
1000	M1000	2010-07	BR9EYA	BR9EIX-SOLID	0.028
1000	Mountain Cat	2002-01	BR9EYA	BR9EIX-SOLID	0.028
1000	Pantera	2001-00	BR9EYA	BR9EIX-SOLID	0.028
1000	Thundercat	2002-98	BR9EYA	BR9EIX-SOLID	0.028
1000	Thundercat	2000-98	BR9EYA	BR9EIX-SOLID	0.028
1000	Thundercat M-Cat	2000-98	BR9EYA	BR9EIX-SOLID	0.028
900	Thundercat	1997-93	BR9ES-SOLID	BR9EIX-SOLID	0.025
900	Mountain Cat	2004-03	BR9EYA		0.028
900	King Cat	2006-04	BR9EYA		0.028
900	ZR 900	2006-03	BR9EYA		0.028
800	Crossfire	2007	BR9EYA	BR9EIX-SOLID	0.028
800	F8	2007	BR9EYA	BR9EIX-SOLID	0.028
800	M8	2007	BR9EYA	BR9EIX-SOLID	0.028
800	Mountain Cat	2004-01	BR9EYA	BR9EIX-SOLID	0.028
800	Pantera	1999-98	BR9EYA	BR9EIX-SOLID	0.028
800	Pantera	2004	BR9ECS		0.028
800	Pantera	2002	BR9EYA	BR9EIX-SOLID	0.028
800	ZL	2003-01	BR9EYA	BR9EIX-SOLID	0.028
800	ZR	2003-01	BR9EYA	BR9EIX-SOLID	0.028
800	ZRT	2001-98	BR9EYA	BR9EIX-SOLID	0.028
800	ZRT	1997-95	BR9ES-SOLID	BR9EIX-SOLID	0.028
700	Crossfire	2007	BR9EYA	BR9EIX-SOLID	0.028
700	Firecat	2006-03	BR9EYA	BR9EIX-SOLID	0.028
700	M7	2006	BR9EYA	BR9EIX-SOLID	0.028
700	Sabrecat 700	2006-04	BR9EYA	BR9EIX-SOLID	0.028
700	Mountain Cat	1994-91	BR9ES-SOLID	BR9EIX-SOLID	0.028
700	Powder Special	2000	BR10ES-SOLID	BR10EIX-SOLID	0.028
700	Powder Special	1999	BR9EYA	BR9EIX-SOLID	0.028
700	Wildcat	1996-95	BR9EYA	BR9EIX-SOLID	0.028
700	Wildcat	1994-91	BR9ES-SOLID	BR9EIX-SOLID	0.028
700	ZL	2000	BR10ES-SOLID	BR10EIX-SOLID	0.028
700	ZR	1995-94	BR9ES-SOLID	BR9EIX-SOLID	0.028
700	ZR	2000	BR10ES-SOLID	BR10EIX-SOLID	0.028
700	ZR	1999	BR9EYA	BR9EIX-SOLID	0.028
660	T660 Turbo	2007-04	-	KR8AI	0.032
660	Bearcat Widetrack	2007-03	-	KR8AI	0.032
660	Panther	2007-06	-	KR8AI	0.032
660	T660 Touring	2007-04	-	KR8AI	0.032
660	T660 Turbo	2007-04	-	KR8AI	0.032
660	4-Stroke	2003	-	KR8AI	0.032
660	4-Stroke	2002	DCPR7E	DCPR7EIX	0.028
650	Wildcat	1989-88	-	BR10EIX	0.028
650	Wildcat	1990	BR9ES-SOLID	BR9EIX-SOLID	0.028
650	T8A650RX (Kaw)		B10EGV	BR10EIX	0.016
600	Crossfire	2007-06	BR9EYA	BR9EIX-SOLID	0.028
600	F6	2007	BR9EYA	BR9EIX-SOLID	0.028
600	F6 Firecat	2006-04	BR9EYA	-	0.028
600	Sabrecat 600	2006-04	BR9EYA	BR9EIX-SOLID	0.028
600	EXT	1998-97	BR9EYA	BR9EIX-SOLID	0.028
600	Mountain Cat	2004-01	BR9EYA	BR9EIX-SOLID	0.028
600	Pantera	2005-02	BR9EYA	BR9EIX-SOLID	0.028
600	Powder Special	2000	BR9EYA	BR9EIX-SOLID	0.028
600	Triple Touring	2001-99	BR9EYA	BR9EIX-SOLID	0.028
600	ZL	2003-99	BR9EYA	BR9EIX-SOLID	0.028
600	ZR	2002-98	BR9EYA	BR9EIX-SOLID	0.028
600	ZRT	2002-96	BR9EYA	BR9EIX-SOLID	0.028
580	EXT	1997-93	BR9ES-SOLID	BR9EIX-SOLID	0.028
580	EXT (EFI)	1998-94	BR9EYA	BR9EIX-SOLID	0.028
580	EXT Z	1994-93	BR9ES-SOLID	BR9EIX-SOLID	0.028
580	Mountain Cat	1994-93	BR9ES-SOLID	BR9EIX-SOLID	0.028
580	Pantera	2001-95	BR9EYA	BR9EIX-SOLID	0.028
580	ZL	2000	BR9EYA	BR9EIX-SOLID	0.028
580	ZR	1996-94	BR9ES-SOLID	BR9EIX-SOLID	0.028
580	ZR (EFI)	1997-95	BR9EYA	BR9EIX-SOLID	0.028
570	Bearcat	2007-05	BR9EYA	BR9EIX-SOLID	0.028
570	Mountain Cat	2004-02	BR9EYA	BR9EIX-SOLID	0.028
570	Panther	2007-02	BR9EYA	BR9EIX-SOLID	0.028
570	Z	2007-02	BR9EYA	BR9EIX-SOLID	0.028
550	Bearcat	2002-98	BR9EYA	BR9EIX-SOLID	0.028
550	Bearcat	1997-95	BR9ES-SOLID	BR9EIX-SOLID	0.028

CC	Model	Year	Regular Plug	Premium Plug	Gap	CC	Model	Year	Regular Plug	Premium Plug	Gap
550	Cheetah	1994	BR9ES-SOLID	BR9EIX-SOLID	0.028	440	Z	1997-95	BR9ES-SOLID	BR9EIX-SOLID	0.028
550	Cougar L/C	1997-95	BR9ES-SOLID	BR9EIX-SOLID	0.028	440	Z Sno Pro	2003-01	BR9EYA	BR9EIX-SOLID	0.028
550	Cougar L/C	1998	BR9EYA	BR9EIX-SOLID	0.028	440	ZL	2000-98	BR9EYA	BR9EIX-SOLID	0.028
550	EXT	1993	BR9ES-SOLID	BR9EIX-SOLID	0.028	440	ZL	1997	BR9ES-SOLID	BR9EIX-SOLID	0.028
550	EXT Special	1992-91	BR9ES-SOLID	BR9EIX-SOLID	0.028	440	ZR	1997-94	BR9ES-SOLID	BR9EIX-SOLID	0.028
550	Mountain Cat	1993	BR9ES-SOLID	BR9EIX-SOLID	0.028	440	ZR	1998	BR9EYA	BR9EIX-SOLID	0.028
550	Pantera	2005-02	BR9EYA	BR9EIX-SOLID	0.028	440	Suz.AF44L2		BR9ES-SOLID	BR9EIX-SOLID	0.020
550	Pantera	1993	BR9ES-SOLID	BR9EIX-SOLID	0.028	440	AD44L1		BR9ES-SOLID	BR9EIX-SOLID	0.020
550	Panther	2001-98	BR9EYA	BR9EIX-SOLID	0.028	440	AC44A3		BR9ES-SOLID	BR9EIX-SOLID	0.020
550	Panther	1994-93	BR9ES-SOLID	BR9EIX-SOLID	0.028	440	AC44A2		BR8ES-SOLID	BR8EIX	0.020
550	Prowler	1995	BR9ES-SOLID	BR9EIX-SOLID	0.028	440	AC44A1		BR8ES-SOLID	BR8EIX	0.024
550	ZL	2003-00	BR9EYA	BR9EIX-SOLID	0.028	440	AB44F2		BR9ES-SOLID	BR9EIX-SOLID	0.024
530	Cheetah L/C	1988-86	BR10ES-SOLID	BR10EIX-SOLID	0.028	440	AB44F1		BR8ES-SOLID	BR8EIX	0.020
530	El Tigre 6000	1988-86	BR10ES-SOLID	BR10EIX-SOLID	0.028	440	Kaw T7B440RS1A		-	BR9EIX-SOLID	0.016
530	El Tigre EXT	1992-89	BR9ES-SOLID	BR9EIX-SOLID	0.028	440	T7A440RX		B10EGV	BR10EIX	0.016
500	F5 Firecat	2005-03	BR9EYA	BR9EIX-SOLID	0.028	440	T7A440RS		-	BR9EIX-SOLID	0.016
500	Sabrecat 500	2005-04	BR9EYA	BR9EIX-SOLID	0.028	440	T7440FR2		-	BR9EIX-SOLID	0.016
500	Cheetah	1990-86	BR9ES-SOLID	BR9EIX-SOLID	0.028	440	T7440FR1		-	BR9EIX-SOLID	0.016
500	Cougar	1990-85	BR9ES-SOLID	BR9EIX-SOLID	0.028	440	T1D440A2A		BR8ES-SOLID	BR8EIX	0.030
500	Crossfire	2007	BR9EYA	BR9EIX-SOLID	0.028	440	T1C440S1A, S2A		BR8ES-SOLID	BR8EIX	0.030
500	El Tigre 5000 F/C	1981	BR9ES-SOLID	BR9EIX-SOLID	0.020	440	T1B440S		BR8ES-SOLID	BR8EIX	0.030
500	El Tigre 6000	1985-84	-	BR10EIX	0.028	440	T1B440D1A		BUE	-	-
500	El Tigre 6000	1981	-	BR10EIX	0.020	440	T1A440S1		BR8ES-SOLID	BR8EIX	0.030
500	F5	2007	BR9EYA	BR9EIX-SOLID	0.028	440	T1A440F2		B10EGV	BR10EIX	0.016
500	Firecat	2006-03	BR9EYA	BR9EIX-SOLID	0.028	400	T7B400RS1A		-	BR9EIX-SOLID	0.016
500	Jag	1996	BR9ES-SOLID	BR9EIX-SOLID	0.028	400	T7A400RS		-	BR9EIX-SOLID	0.016
500	M5	2006-05	BR9EYA	BR9EIX-SOLID	0.028	400	T1B400S		BR8ES-SOLID	BR8EIX	0.030
500	Mountain Cat	2002-01	BR9EYA	BR9EIX-SOLID	0.028	400	T1A400S1		BR8ES-SOLID	BR8EIX	0.030
500	Pantera	1981	BR9ES-SOLID	BR9EIX-SOLID	0.020	400	T1A400F1		B10EGV	BR10EIX	0.016
500	Panther	1988-86	BR9ES-SOLID	BR9EIX-SOLID	0.028	370	Panther	2007-03	BR9EYA	BR9EIX-SOLID	0.028
500	Powder Special	2000-99	BR9EYA	BR9EIX-SOLID	0.028	370	Panther	2001	BR9EYA	BR9EIX-SOLID	0.028
500	Sabercat	2006-04	BR9EYA	BR9EIX-SOLID	0.028	370	Z	2007-99	BR9EYA	BR9EIX-SOLID	0.028
500	ZL	2003-98	BR9EYA	BR9EIX-SOLID	0.028	340	Bearcat	2000-98	BR9EYA	BR9EIX-SOLID	0.028
500	ZR	2002-98	BR9EYA	BR9EIX-SOLID	0.028	340	Bearcat	1997-95	BR9ES-SOLID	BR9EIX-SOLID	0.028
500	w/Suz AB50A1,2		BR8ES-SOLID	BR8EIX	0.024	340	Cheetah	1994	BR9ES-SOLID	BR9EIX-SOLID	0.028
500	AB50A3,4		BR9ES-SOLID	BR9EIX-SOLID	0.020	340	Jag	1999-98	BR9EYA	BR9EIX-SOLID	0.028
500	AC50F1,2		BR9ES-SOLID	BR9EIX-SOLID	0.024	340	Jag	1992-91	BR8ES-SOLID	BR8EIX-SOLID	0.028
500	AC50F3,4,5		BR9ES-SOLID	BR9EIX-SOLID	0.020	340	Jag	1990-87	BR8ES-SOLID	BR8EIX	0.028
500	AD50F3,4,5		BR9ES-SOLID	BR9EIX-SOLID	0.020	340	Lynx	1993-91	BR9ES-SOLID	BR9EIX-SOLID	0.028
500	AD50F6		-	BR10EIX	0.020	340	Lynx	1992-91	BR8ES-SOLID	BR8EIX-SOLID	0.028
500	AE50A1.6		BR9ES-SOLID	BR9EIX-SOLID	0.020	340	Panther	2000-98	BR9EYA	BR9EIX-SOLID	0.028
500	AH50L1		BR9ES-SOLID	BR9EIX-SOLID	0.020	340	Puma	1997-94	BR9ES-SOLID	BR9EIX-SOLID	0.028
500	AL50A1		BR9ES-SOLID	BR9EIX-SOLID	0.020	340	Sno Pro 340 (Suz)		B10EGV	BR10EIX	0.018
440	Bearcat	2000-98	BR9EYA	BR9EIX-SOLID	0.028	340	AF34A1,2		BR8ES-SOLID	BR8EIX	0.020
440	Bearcat	1997-95	BR9ES-SOLID	BR9EIX-SOLID	0.028	340	AE44L2		B10EGV	BR10EIX	0.018
440	Cheetah F/C	1994	BR9ES-SOLID	BR9EIX-SOLID	0.028	340	AE23L2		BR9ES-SOLID	BR9EIX-SOLID	0.020
440	Cheetah L/C	1993-91	BR9ES-SOLID	BR9EIX-SOLID	0.028	340	AD34L1		B10EGV	BR10EIX	0.018
440	Cougar L/C	1994-93	BR9ES-SOLID	BR9EIX-SOLID	0.028	340	AC34L2		B10EGV	BR10EIX	0.018
440	El Tigre 5000	1988-87	BR9ES-SOLID	BR9EIX-SOLID	0.028	340	AB34F1		BR9ES-SOLID	BR9EIX-SOLID	0.025
440	EXT Mountain Cat	1995	BR9ES-SOLID	BR9EIX-SOLID	0.028	340	AA34F3,4,5		BR8ES-SOLID	BR8EIX	0.020
440	Jag	1999-98	BR9EYA	BR9EIX-SOLID	0.028	340	AA34F1,2		BR8ES-SOLID	BR8EIX	0.024
440	Jag	1997-95	BR9ES-SOLID	BR9EIX-SOLID	0.028	340	340 Mod Kit (Suz)		B10EGV	BR10EIX	0.018
440	Jag	1988-86	BR9ES-SOLID	BR9EIX-SOLID	0.028	340	Kaw T7C340FR1,2		-	BR9EIX-SOLID	0.016
440	Jag 4000	1985	BR9ES-SOLID	BR9EIX-SOLID	0.028	340	T7340RX		B10EGV	BR10EIX	0.016
440	Jag 4000	1981	BR9ES-SOLID	BR9EIX-SOLID	0.028	340	T1D340A2A		BR8ES-SOLID	BR8EIX	0.030
440	Jag AFS	1994-91	BR9ES-SOLID	BR9EIX-SOLID	0.028	340	T1D340F1		BR8ES-SOLID	BR8EIX	0.030
440	Jag AFS	1990-89	BR9ES-SOLID	BR9EIX-SOLID	0.028	340	T1C340S1A,S2A		BR8ES-SOLID	BR8EIX	0.030
440	Jag AWS	1994-93	BR9ES-SOLID	BR9EIX-SOLID	0.028	340	T1C340RS1A		-	BR9EIX-SOLID	0.016
440	Jag L/C	1996	BR9ES-SOLID	BR9EIX-SOLID	0.028	340	T1B340S		BR8ES-SOLID	BR8EIX	0.030
440	Jag Z	1994-93	BR9ES-SOLID	BR9EIX-SOLID	0.028	340	T1B340RS		-	BR9EIX-SOLID	0.016
440	Pantera	1992-91	BR9ES-SOLID	BR9EIX-SOLID	0.028	340	T1A340S1		BR8ES-SOLID	BR8EIX	0.030
440	Pantera	1990-86	BR9ES-SOLID	BR9EIX-SOLID	0.028	340	T1A340F1		B10EGV	BR10EIX	0.016
440	Pantera	2001	BR9EYA	BR9EIX-SOLID	0.028	292	TB292S		BR9HS	BR9HIX	0.028
440	Panther	2002-98	BR9EYA	BR9EIX-SOLID	0.028	292	T7A290RS		B10EGV	BR10EIX	0.016
440	Panther	1997-91	BR9ES-SOLID	BR9EIX-SOLID	0.028	292	T4C292S1A		BR9HS	BR9HIX	0.028
440	Panther	1990-89	BR9ES-SOLID	BR9EIX-SOLID	0.020	292	T1C295-RS1A		-	BR9EIX-SOLID	0.016
440	Panther	1985-84	BR9ES-SOLID	BR9EIX-SOLID	0.020	292	KB150A,B		AB8	-	0.028
440	Panther L/C	1996	BR9ES-SOLID	BR9EIX-SOLID	0.028	275	Suz AA28F4,5		BR8ES-SOLID	BR8EIX	0.020
440	Prowler	1994-90	BR9ES-SOLID	BR9EIX-SOLID	0.028	275	AA28F1,2,3		BR8ES-SOLID	BR8EIX	0.024
440	Prowler Z	1993	BR9ES-SOLID	BR9EIX-SOLID	0.028	250	AB25F3,4		BR8ES-SOLID	BR8EIX	0.020
440	Sno Pro	2006-04	BR9EYA	BR9EIX-SOLID	0.028	250	AB25F1		BR8ES-SOLID	BR8EIX	0.024
440	Sno Pro		B10EGV	BR10EIX	0.018	250	AA25L2		B10EGV	BR10EIX	0.018
440	Super Jag	1992-91	BR9ES-SOLID	BR9EIX-SOLID	0.028	250	Kaw T7C250FR2		-	BR9EIX-SOLID	0.016
440	Super Jag	1990-87	BR9ES-SOLID	BR9EIX-SOLID	0.028	250	T1D250F1		BR8ES-SOLID	BR8EIX	0.030
440	Prowler	1990	BR9ES-SOLID	BR9EIX-SOLID	0.028	120	Z, Z120, ZR120	2005-00	BPR6ES	BPR6EIX	0.028
440	Trail Cat	1981	BR9ES-SOLID	BR9EIX-SOLID	0.028	60	Kitty Cat	2000-72	BR6HS	BR6HIX	0.028
440	Z	2006-98	BR9EYA	BR9EIX-SOLID	0.028						

CC	Model	Year	Regular Plug	Premium Plug	Gap
Alouette		<i>See Sachs, Kohler, Xenoah</i>			
Blade					
800		2002-01	BR9ES-SOLID	BR9EIX-SOLID	0.028
700		2002-00	BR9ES-SOLID	BR9EIX-SOLID	0.028
600		2002-01	BR9ES-SOLID	BR9EIX-SOLID	0.028
Bolens					
440	440		BR8HS	BR8HIX	0.024
400	399		BR8HS	BR8HIX	0.024
340	340		BR8HS	BR8HIX	0.024
315	315		BR8HS	BR8HIX	0.024
295	295		BR8HS	BR8HIX	0.024
292	292		BR8HS	BR8HIX	0.024
CCW					
440	KEC 440		BR8HS	BR8HIX	0.024
440	KEC 440/5		BR8ES-SOLID	BR8EIX	0.024
400	KEC 400/22		BR8ES-SOLID	BR8EIX	0.024
400	KEC 400		BR8HS	BR8HIX	0.024
340	KEC 340		BR8HS	BR8HIX	0.024
340	KEC 340/22A		BR8ES-SOLID	BR8EIX	0.024
340	KEC 340/5		BR8ES-SOLID	BR8EIX	0.024
290	KEC 290RC/2		BUE		
290	KEC 290		BR8HS	BR8HIX	0.024
248	KEC 248		AB7		0.024
Chapparral					
650	Racing			BR8HIX	0.020
440	440 (1/2" Reach)		BR7HS	BR7HIX	0.020
440	440 (3/4" Reach)		BR7ES	BR7EIX	0.020
440	Racing			BR8HIX	0.020
440	SS (1/2" Reach)		BR8HS	BR8HIX	0.020
440	SS (3/4" Reach)		BR9ES-SOLID	BR9EIX-SOLID	0.020
440	SSX		BR8ES-SOLID	BR8EIX	0.020
400	400 (1/2" Reach)		BR7HS	BR7HIX	0.020
400	400 (3/4" Reach)		BR8ES-SOLID	BR8EIX	0.020
400	SS		BR8HS	BR8HIX	0.020
400	SS		BR9ES-SOLID	BR9EIX-SOLID	0.020
340	340		BR7ES	BR7EIX	0.020
340	SS		BR9ES-SOLID	BR9EIX-SOLID	0.020
340	SSX		BR8ES-SOLID	BR8EIX	0.020
295	295		BR7ES	BR7EIX	0.020
250	25C		BR8ES-SOLID	BR8EIX	0.020
Hirth					
800	230R		BR8HS	BR8HIX	0.020
650	172R		AB7		0.020
650	281RO		BR8ES-SOLID	BR8EIX	0.020
650	280R		BR8ES-SOLID	BR8EIX	0.020
650	231R		BR8HS	BR8HIX	0.020
650	171R		AB7		0.020
600	170R		AB7		0.020
500	180R, 220R		AB7		0.020
500	275R		AB7		0.020
440	276RO		AB8		0.020
440	211R, 270R, 273R		AB7		0.020
400	210R		AB7		0.020
400	271R3,4		AB8		0.020
400	271RO		AB7		0.020
400	277RO		AB8		0.020
400	R3,R4		AB8		0.020
372	160R, 200R		AB7		0.020
340	278RO, 279RO		AB8		0.020
340	194R		AB7		0.020
340	260R		BR8ES-SOLID	BR8EIX	0.020
340	R3,R4		BR8ES-SOLID	BR8EIX	0.020
317	192R		AB7		0.020
300	190R, 191R		AB7		0.020
300	52R,53R,54R,55R		AB7		0.020
292	193R		AB7		0.020
292	261R		BR8ES-SOLID	BR8EIX	0.020
292	56R		AB7		0.020
292	R3,R4		BR8ES-SOLID	BR8EIX	0.020
250	81R, 82R		AB7		0.020
200	60R		AB7		0.020
180	110R		AB7		0.020

CC	Model	Year	Regular Plug	Premium Plug	Gap
JLO/Rockwell					
760	760/2		AB8		0.020
600	LB600/2		AB7		0.020
440	LR440/2		AB7		0.020
440	2F 440		BR8ES-SOLID	BR8EIX	0.020
400	L399/2		BR8ES-SOLID	BR8EIX	0.020
400	LR399/2		BR8ES-SOLID	BR8EIX	0.020
400	LR400/2		BR8ES-SOLID	BR8EIX	0.020
395	L395		AB7		0.020
380	L380		AB7		0.020
372	L372		AB7		0.020
340	2F 340		BR8ES-SOLID	BR8EIX	0.020
340	L340		AB7		0.020
340	L340/70		BR8ES-SOLID	BR8EIX	0.020
340	LR340/2		BR8ES-SOLID	BR8EIX	0.020
300	L297, L300		AB7		0.020
295	2F 295		BR8ES-SOLID	BR8EIX	0.020
295	L295/70		BR8ES-SOLID	BR8EIX	0.020
295	R295		BR8ES-SOLID	BR8EIX	0.020
292	L292, L295		AB7		0.020
252	L252		AB6		0.020
230	L230		AB7		0.020
227	L227		AB7		0.020
197	L197		AB6		0.020
152	L152		AB6		0.020
100	L99		B6HS	BR6HIX	0.020
John Deere					
440	All Models	1982-81	BR9ES-SOLID	BR9EIX-SOLID	0.032
440	KEC440/22A w/CDI		BR10ES-SOLID	BR10EIX	0.024
440	KEC440/22A W/ Magneto		BR8ES-SOLID	BR8EIX	0.024
440	KEC440/22B		BR10ES-SOLID	BR10EIX	0.024
440	KEC440/22C		BR10ES-SOLID	BR10EIX	0.024
440	KEC440/23		BR10ES-SOLID	BR10EIX	0.024
440	TA440A		BR8ES-SOLID	BR8EIX	0.032
440	TA440B		BR9ES-SOLID	BR9EIX-SOLID	0.032
440	TC440A		BR9ES-SOLID	BR9EIX-SOLID	0.032
340	KEC340/22		BR10ES-SOLID	BR10EIX	0.024
340	KEC340/22A W/ Magneto		BR8ES-SOLID	BR8EIX	0.024
340	KEC340/23		BR10ES-SOLID	BR10EIX	0.024
340	KEC340RS/2		BR10ES-SOLID	BR10EIX	0.024
340	KEC340/5A		BR8ES-SOLID	BR8EIX	0.024
340	TA340A		BR8ES-SOLID	BR8EIX	0.032
340	TB340A		BR8ES-SOLID	BR8EIX	0.032
340	TC340E		BR9ES-SOLID	BR9EIX-SOLID	0.032
295	KEC295RS/2		BR10ES-SOLID	BR10EIX	0.024
Kawasaki					
530	TC530D-B201			BR9EIX-SOLID	0.024
440	TA440A		BR8ES-SOLID	BR8EIX	0.032
440	TA440B			BR9EIX-SOLID	0.032
440	TA440B-C201			BR9EIX-SOLID	0.024
440	TA440C			BR9EIX-SOLID	0.024
440	TA440C-B201			BR9EIX-SOLID	0.024
440	TA440C-D203			BR9EIX-SOLID	0.024
440	TA440C-D210			BR9EIX-SOLID	0.024
440	TC440A			BR9EIX-SOLID	0.024
440	TC440A-C201			BR9EIX-SOLID	0.024
440	TC440C-A201			BR9EIX-SOLID	0.024
440	TC440D-A201			BR9EIX-SOLID	0.024
440	TC440D-A204			BR9EIX-SOLID	0.024
340	TA340A		BR8ES-SOLID	BR8EIX	0.032
340	TA340A-A201		BR8ES-SOLID	BR8EIX-SOLID	0.032
340	TA340A-D201		BR8ES-SOLID	BR8EIX-SOLID	0.032
340	TA340A-D203		BR9ES-SOLID	BR9EIX-SOLID	0.032
340	TC340A			BR9EIX-SOLID	0.024
340	TC340A-C201			BR9EIX-SOLID	0.024
Kohler					
645	K141 4-stroke		B6S		0.020
645	K161 4-stroke		B6S		0.020
645	K18 4-stroke		B6S		0.020
645	K645-3RS (1/2" Reach)		BR9HS	BR9HIX	0.020
645	K645-3RS (3/4" Reach)		BR10ES-SOLID	BR10EIX	0.020
645	K645-3SS (1/2" Reach)		BR9HS	BR9HIX	0.020

Spark Plugs

CC	Model	Year	Regular Plug	Premium Plug	Gap
645	K645-3SS (¾" Reach)		BR10ES-SOLID	BR10EIX	0.020
618	K618-2		AB7		0.020
539	K539-2		AB7		0.020
440	K440-2		AB7		0.020
440	K440-2AM		BR9ES-SOLID	BR9EIX-SOLID	0.020
440	K440-2AM w/CDI		BUE		
440	K440-2AS		BUE		
440	K440-2AX		BR8ES-SOLID	BR8EIX	0.020
440	K440-2RS		BUE		
440	K440-2T		AB7		0.020
440	K440-RLC		BUE		
440	RK440-2T		AB8		0.020
440	SK440-2LC		BUE		
440	K440-2SS (½" Reach)		BR9HS	BR9HIX	0.020
440	K440-2SS (¾" Reach)		BR10ES-SOLID	BR10EIX	0.020
440	K440-3RS (½" Reach)		BR9HS	BR9HIX	0.020
440	K440-3RS (¾" Reach)		BR10ES-SOLID	BR10EIX	0.020
399	K399-2		AB7		0.020
399	K399-2AX		BR9ES-SOLID	BR9EIX-SOLID	0.020
399	K399-2T		AB7		0.020
399	K400-2RS		BUE		
399	RK399-2AX		BR9ES-SOLID	BR9EIX-SOLID	0.020
340	K340-2		BR8HS	BR8HIX	0.020
340	K340-2AS		BUE		
340	K340-2AX		BR8ES-SOLID	BR8EIX	0.020
340	K340-2RS		BUE		
340	K340-2SS		BR10ES-SOLID	BR10EIX	0.020
340	K340-2T		BR8HS	BR8HIX	0.020
340	K340-RLC		BUE		
340	L340-2FA		BR8ES-SOLID	BR8EIX	0.020
340	SK340-2AX		BUE		
335	K335-1		AB7		0.020
335	K335-1T		AB7		0.020
309	K309		AB7		0.020
309	K309-1T		AB7		0.020
295	K295-1		AB7		0.020
295	K295-1T		AB7		0.020
295	K295-2T		BR8ES-SOLID	BR8EIX	0.020
295	K295-2		BR8ES-SOLID	BR8EIX	0.020
295	K295-2AX		BR8ES-SOLID	BR8EIX	0.020
295	K295-2SS		BR10ES-SOLID	BR10EIX	0.020
250	K250-RLC		BUE		
250	K250-1AM		BR8ES-SOLID	BR8EIX	0.020

Mercury *See also: CCW, Kohler, Hirth*

644	Hurricane Mark		BUHW		
-----	----------------	--	------	--	--

Moto-Ski

500	Futura	1983-82	BR7ES	BR7EIX	0.016
500	Futura	1981-80	BR8ES-SOLID	BR8EIX-SOLID	0.016
500	Grand Prix Special	1981-79	BR8ES-SOLID	BR8EIX-SOLID	0.016
464	Futura LC	1982-80	BR8ES-SOLID	BR8EIX-SOLID	0.016
440	Capri	1973	BR7HS	BR7HIX	0.020
440	Chimo	1975-74	BR8ES-SOLID	BR8EIX-SOLID	0.020
440	Futura	1979-76	AB8		0.020
440	Futura	1975-74	BR8ES-SOLID	BR8EIX-SOLID	0.020
440	Futura	1973	BR7HS	BR7HIX	0.020
440	Futura LC	1979-78	BR8ES-SOLID	BR8EIX-SOLID	0.020
440	Grand Sport	1975-74	BR8ES-SOLID	BR8EIX-SOLID	0.020
440	S440	1973	BR8ES-SOLID	BR8EIX-SOLID	0.020
440	Ultra Sonic	1982-80	BR9ES-SOLID	BR9EIX-SOLID	0.020
440	Zephyr	1973	BR7HS	BR7HIX	0.020
400	Futura	1979-77	BR8ES-SOLID	BR8EIX	0.020
400	Grand Sport	1975-74	BR8ES-SOLID	BR8EIX	0.020
400	S399	1973	BR8ES-SOLID	BR8EIX	0.020
377	Futura 300	1983-80	BR8ES-SOLID	BR8EIX-SOLID	0.016
377	Mirage	1983-80	BR8ES-SOLID	BR8EIX-SOLID	0.016
340	Capri	1973	BR7HS	BR7HIX	0.020
340	Futura	1974	BR8HS	BR8HIX	0.020
340	Futura	1973	BR7HS	BR7HIX	0.020
340	Nuvik	1979-78	BR9HS	BR9HIX	0.020
340	Nuvik	1977-75	BR8HS	BR8HIX	0.020
340	Sonic	1979-75	BR8ES-SOLID	BR8EIX	0.020
340	Super Sonic	1981-79	BR9ES-SOLID	BR9EIX-SOLID	0.020
340	Zephyr	1973	BR7HS	BR7HIX	0.020
300	Mirage	1979	BR7HS	BR7HIX	0.020
300	Nuvik	1977	BR7HS	BR7HIX	0.020

CC	Model	Year	Regular Plug	Premium Plug	Gap
300	Nuvik	1976	AB7		0.020
300	Nuvik	1975	BR7HS	BR7HIX	0.020
295	Capri	1979	BR8HS	BR8HIX	0.020
295	Futura	1979	BR8HS	BR8HIX	0.020
277	Mirage	1982-80	BR8ES-SOLID	BR8EIX-SOLID	0.016
250	Cadet	1975-73	BR7HS	BR7HIX	0.020
250	Sonic	1976	BR7ES	BR7EIX	0.020
250	Spirit	1983-76	AB6		0.020

O.M.C.

440	M225, M225C		B6S		0.030
440	M226E, M226W		B6S		0.030
440	M227		B7S		0.030
440	M229E, M229W		B8S		0.030
440	M230, M230E		B8S		0.030
440	M231E, M231W		B6S		0.030
440	M233, M233E		B8S		0.030
440	M234E		B8S		0.030
440	M236		B8S		0.030
440	M238		B8S		0.030
440	M238 w/CDI		BUHX		
440	M239E		B8S		0.030
440	M239E w/CDI		BUHX		
440	M241		B8S		0.030
440	M241 w/CDI		BUHX		
440	M245		B8S		0.030
440	M245 w/CDI		BUHX		
400	M228		B6S		0.030
400	M232, M232E		B8S		0.030
400	M235, M237		B8S		0.030
362	M215		B4		0.030

Polaris

800	800 Classic	2004	BPR9ES	BPR9EIX	0.028
800	800 Classic Tour.	2004	BPR9ES	BPR9EIX	0.028
800	800 Pro X	2004	BPR9ES	BPR9EIX	0.028
800	800 Pro X2	2004	BPR9ES	BPR9EIX	0.028
800	800 Pro XR	2004	BPR9ES	BPR9EIX	0.028
800	800 Switchback	2004	BPR9ES	BPR9EIX	0.028
800	Indy LE	2001	BPR9ES	BPR9EIX	0.028
800	Indy RMK	2004-00	BPR9ES	BPR9EIX	0.028
800	Indy Storm	1998-94	BR9ES-SOLID	BR9EIX-SOLID	0.029
800	Indy Storm SKS	1996-94	BR8ES-SOLID	BR8EIX-SOLID	0.028
800	Indy XC SP	2004-01	BPR9ES	BPR9EIX	0.028
800	Indy XCR	2002-99	BR9ES-SOLID	BR9EIX-SOLID	0.029
780	Frontier Classic	2004	BKR5EY	BKR5EIX	0.030
780	Frontier Touring	2004	BKR5EY	BKR5EIX	
750	Indy Storm	1993	BR9ES-SOLID	BR9EIX-SOLID	0.024
750	EC74P		BR7ES	BR7EIX	0.020
700	700 Classic	2004	BPR9ES	BPR9EIX	0.028
700	700 Class. Touring	2004	BPR9ES	BPR9EIX	0.028
700	700 Pro X	2004	BPR9ES	BPR9EIX	0.028
700	700 Pro X2	2004	BPR9ES	BPR9EIX	0.028
700	700 RMK	2004	BPR9ES	BPR9EIX	0.028
700	700 Switchback	2004	BPR9ES	BPR9EIX	0.028
700	700 XC SP	2004	BPR9ES	BPR9EIX	0.028
700	Indy Classic	2002-01	BPR9ES	BPR9EIX	0.028
700	Indy RMK	2002-00	BPR9ES	BPR9EIX	0.028
700	Indy RMK	1999-97	BR9ES-SOLID	BR9EIX-SOLID	0.029
700	Indy SKS	2002-00	BPR9ES	BPR9EIX	0.028
700	Indy SKS	1999-97	BR9ES-SOLID	BR9EIX-SOLID	0.029
700	Indy XC	2002-00	BPR9ES	BPR9EIX	0.028
700	Indy XC	1999-98	BR9ES-SOLID	BR9EIX-SOLID	0.029
700	Indy XCR	1999	BR9ES-SOLID	BR9EIX-SOLID	0.028
680	Indy Ultra	1998-96	BR9ES-SOLID	BR9EIX-SOLID	0.028
680	Indy XCR	1998	BR9ES-SOLID	BR9EIX-SOLID	0.028
650	Indy	1994-88	BR9ES-SOLID	BR9EIX-SOLID	0.025
650	Indy RXL	1997-95	BR9ES-SOLID	BR9EIX-SOLID	0.025
600	600 Classic	2004	BPR9ES	BPR9EIX	0.028
600	600 Classic Tour.	2004	BPR9ES	BPR9EIX	0.028
600	600 Pro X	2004-01	BPR9ES	BPR9EIX	0.028
600	600 Pro X2	2004	BPR9ES	BPR9EIX	0.028
600	600 RMK	2007-03	BPR9ES	BPR9EIX	0.028
600	600 Switchback	2007-04	BPR9ES	BPR9EIX	0.028
600	600 XC SP	2005-03	BPR9ES	BPR9EIX	0.028
600	Indy	1987-84	BR9ES-SOLID	BR9EIX-SOLID	0.024
600	Indy	1984	BR9ES-SOLID	BR9EIX-SOLID	0.024

CC	Model	Year	Regular Plug	Premium Plug	Gap
600	Indy Classic	2002-01	BPR9ES	BPR9EIX	0.028
600	Indy RMK	2002-00	BPR9ES	BPR9EIX	0.028
600	Indy RMK	1999-98	BR9ES-SOLID	BR9EIX-SOLID	0.024
600	Indy Touring	2002-00	BPR9ES	BPR9EIX	0.028
600	Indy Triumph	2000	BR9ES-SOLID	BR9EIX-SOLID	0.028
600	Indy XC	2002-00	BPR9ES	BPR9EIX	0.028
600	Indy XC	1999-97	BR9ES-SOLID	BR9EIX-SOLID	0.024
600	Indy XCR	1998-95	BR9ES-SOLID	BR9EIX-SOLID	0.024
600	Indy XLT	1999-95	BR8ES-SOLID	BR8EIX-SOLID	0.028
600	Indy XLT	1997-95	BR8ES-SOLID	BR8EIX-SOLID	0.028
600	Indy XLT SP	1999-97	BR9ES-SOLID	BR9EIX-SOLID	0.028
580	Indy XLT	1994-93	BR9ES-SOLID	BR9EIX-SOLID	0.024
550	550 Classic Edge	2006-03	BR9ES-SOLID	BR9EIX-SOLID	0.028
550	550 Pro X	2004	BR9ES-SOLID	BR9EIX-SOLID	0.028
550	Indy 550 Classic	2002	BR9ES-SOLID	BR9EIX-SOLID	0.028
550	Indy Sport Tour.	2005-00	BR9ES-SOLID	BR9EIX-SOLID	0.028
550	Indy Super Sport	2007-00	BR9ES-SOLID	BR9EIX-SOLID	0.028
550	Indy Super Sport	1999	BR8ES-SOLID	BR8EIX-SOLID	0.028
550	Indy Trail RMK	2007-00	BR9ES-SOLID	BR9EIX-SOLID	0.028
550	Indy Trail Touring	2006-02	BR9ES-SOLID	BR9EIX-SOLID	0.028
550	Indy Trail Touring	2000	BR8ES-SOLID	BR8EIX-SOLID	0.028
550	Indy Trail Tour Dlx	2007	BR9ES-SOLID	BR9EIX-SOLID	0.028
540	EC54P, EC54PM		BR8ES-SOLID	BR8EIX	0.020
500	500 Classic	2006-04	BR8ES-SOLID	BR8EIX-SOLID	0.028
500	500 Edge	2004-03	BR8ES-SOLID	BR8EIX-SOLID	0.028
500	500 XC SP	2007-03	BPR9ES	BPR9EIX	0.028
500	Indy	2006-05	BR8ES-SOLID	BR8EIX-SOLID	
500	Indy	2002-98	BR8ES-SOLID	BR8EIX-SOLID	0.028
500	Indy	2002-91	BR8ES-SOLID	BR8EIX-SOLID	0.025
500	Indy Classic	2002-95	BR8ES-SOLID	BR8EIX-SOLID	0.028
500	Indy RMK	2002-00	BR9ES-SOLID	BR9EIX-SOLID	0.028
500	Indy RMK	1999-96	BR8ES-SOLID	BR8EIX-SOLID	0.028
500	Indy SKS	1997-95	BR8ES-SOLID	BR8EIX-SOLID	0.028
500	Indy Super Sport	1998-97	BR8ES-SOLID	BR8EIX-SOLID	0.028
500	Indy Trail	1999-98	BR8ES-SOLID	BR8EIX-SOLID	0.028
500	Indy Trail	1997-95	BR9ES-SOLID	BR9EIX-SOLID	0.028
500	Indy Trail RMK	1999-97	BR8ES-SOLID	BR8EIX-SOLID	0.028
500	Indy Widetrack GT	1997-95	BR9ES-SOLID	BR9EIX-SOLID	0.028
500	Indy Widetrack LX	2002-95	BR8ES-SOLID	BR8EIX-SOLID	0.028
500	Indy XC	2003-01	BPR9ES	BPR9EIX	0.028
500	Indy XC	2000-99	BR9ES-SOLID	BR9EIX-SOLID	0.028
500	Indy XC SP 45 Ann.	2000	BPR9ES	BPR9EIX	0.028
500	Wide Trak LX	2007-03	BR8ES-SOLID	BR8EIX-SOLID	0.028
500	XC SP	2007			
500	EC51PL, 01		BR9ES-SOLID	BR9EIX-SOLID	0.020
500	EC50PM-01, 02, 03		BR9ES-SOLID	BR9EIX-SOLID	0.024
500	EC50PL-01,02,03		BR9ES-SOLID	BR9EIX-SOLID	0.024
500	EC51PS		BR10ES-SOLID	BR10EIX	0.020
500	EC51PT		BR9ES-SOLID	BR9EIX-SOLID	0.020
500	EC51PT-04		BR8ES-SOLID	BR8EIX	0.020
500	EC50P		BR7ES	BR7EIX	0.020
440	440 IQ	2005	BPR9ES	BPR9EIX	0.028
440	Indy	1998	BR8ES-SOLID	BR8EIX-SOLID	0.028
440	Indy	1994-91	BR9ES-SOLID	BR9EIX-SOLID	0.025
440	Indy	1988-85	BR9ES-SOLID	BR9EIX-SOLID	0.024
440	Indy	1994	BR9ES-SOLID	BR9EIX-SOLID	0.025
440	Indy	1993	BR8ES-SOLID	BR8EIX-SOLID	0.025
440	Indy LC	1997	BR8ES-SOLID	BR8EIX-SOLID	0.028
440	Indy Pro X	2004-01	BPR9ES	BPR9EIX	0.028
440	Indy Pro X Fan	2003-02	BR9ES-SOLID	BR9EIX-SOLID	0.028
440	Indy SKS	1995-93	BR9ES-SOLID	BR9EIX-SOLID	0.028
440	Indy Sport	1999-98	BR8ES-SOLID	BR8EIX-SOLID	0.028
440	Indy Sport	1997-95	BR9ES-SOLID	BR9EIX-SOLID	0.028
440	Indy Super Sport	1996-91	BR9ES-SOLID	BR9EIX-SOLID	0.028
440	Indy Tran Sport	1999-98	BR8ES-SOLID	BR8EIX-SOLID	0.028
440	Indy Tran Sport	1997-96	BR9ES-SOLID	BR9EIX-SOLID	0.028
440	Indy XC	1997	BR9ES-SOLID	BR9EIX-SOLID	0.028
440	Indy XCF	2001-97	BR9ES-SOLID	BR9EIX-SOLID	0.028
440	Indy XCR	1999-95	BR9ES-SOLID	BR9EIX-SOLID	0.028
440	EC44-2PM-2100		BR9ES-SOLID	BR9EIX-SOLID	0.020
440	EC44-2PM-3100		BR9ES-SOLID	BR9EIX-SOLID	0.020
440	EC44-2PM-5000		BR9ES-SOLID	BR9EIX-SOLID	0.020
440	EC44-2PM-5100		BR9ES-SOLID	BR9EIX-SOLID	0.020
440	EC44-2PM-1100		BR9ES-SOLID	BR9EIX-SOLID	0.020
440	EC44-2PM-3300		BR9ES-SOLID	BR9EIX-SOLID	0.020

CC	Model	Year	Regular Plug	Premium Plug	Gap
440	EC44PT-05		BR9ES-SOLID	BR9EIX-SOLID	0.020
440	EC45PT-05		BR10ES-SOLID	BR10EIX	0.020
440	EC44P		BR7ES	BR7EIX	0.020
440	EC44PM-01, 02, 03		BR8ES-SOLID	BR8EIX-SOLID	0.020
440	EC44PQ		BR8ES-SOLID	BR8EIX	0.020
440	EC44PT, 04		BR10ES-SOLID	BR10EIX	0.020
440	EC44PT-06		BR9ES-SOLID	BR9EIX-SOLID	0.020
400	Indy	1991-85	BR9ES-SOLID	BR9EIX-SOLID	0.024
400	EC40PL-01		BR9ES-SOLID	BR9EIX-SOLID	0.020
400	EC40P, PM		BR7ES	BR7EIX	0.020
400	EC40PS		BR10ES-SOLID	BR10EIX	0.020
372	EC37P		BR8ES-SOLID	BR8EIX	0.020
340	340 Classic	2006-03	BR8ES-SOLID	BR8EIX-SOLID	0.028
340	340 Edge	2007-03	BR8ES-SOLID	BR8EIX-SOLID	0.028
340	340 Edge Touring	2007	BR8ES-SOLID	BR8EIX-SOLID	0.028
340	Indy	2002-99	BR8ES-SOLID	BR8EIX-SOLID	0.028
340	Indy	1990-87	BR9ES-SOLID	BR9EIX-SOLID	0.024
340	Indy 340 Touring	2006-03	BR8ES-SOLID	BR8EIX-SOLID	0.028
340	Indy Lite	1998-91	BR8ES-SOLID	BR8EIX-SOLID	0.028
340	Sprint	1990-87	BR9ES-SOLID	BR9EIX-SOLID	0.024
340	EC34PT-05, 07		BR9ES-SOLID	BR9EIX-SOLID	0.020
340	EC34PL-02, 05		BR9ES-SOLID	BR9EIX-SOLID	0.020
340	EC34PM-04		BR9ES-SOLID	BR9EIX-SOLID	0.028
340	EC34P		BR7ES	BR7EIX	0.020
340	EC34PC		BR8ES-SOLID	BR8EIX	0.020
340	EC34PF		BR8ES-SOLID	BR8EIX	0.020
340	EC34PQ		BR8ES-SOLID	BR8EIX	0.020
340	EC34PS		BR8ES-SOLID	BR8EIX	0.020
340	EC34PT-04		BR8ES-SOLID	BR8EIX	0.020
340	EC34PT-06		BR10ES-SOLID	BR10EIX	0.020
340	EC34PL-01		BR9ES-SOLID	BR9EIX-SOLID	0.020
340	EC34PL-03, 04		BR10ES-SOLID	BR10EIX	0.020
340	EC34PM-03		BR8ES-SOLID	BR8EIX-SOLID	0.020
340	EC34PM-04-N		BR8ES-SOLID	BR8EIX	0.020
294	EC29P		BR7ES	BR7EIX	0.020
294	EC29PF		BR7ES	BR7EIX	0.020
294	EC29PM		BR7ES	BR7EIX	0.020
294	EC29PS		BR8ES-SOLID	BR8EIX	0.020
250	Indy Star	1990-85	BR8ES-SOLID	BR8EIX-SOLID	0.024
250	Indy Starlite	1995-91	BR8ES-SOLID	BR8EIX-SOLID	0.025
250	EC25PT-07		BR9ES-SOLID	BR9EIX-SOLID	0.020
250	EC25PC		BR9ES-SOLID	BR9EIX-SOLID	0.020
250	EC25PT		BR9ES-SOLID	BR9EIX-SOLID	0.020
250	EC25PT-04		BR8ES-SOLID	BR8EIX	0.020
250	EC25PT-05		BR10ES-SOLID	BR10EIX	0.020
250	EC25PT-06		BR9ES-SOLID	BR9EIX-SOLID	0.020
250	EC25PM-01		BR8ES-SOLID	BR8EIX-SOLID	0.020
175	EC17P		BR7ES	BR7EIX	0.016
164	EC16P		BR7ES	BR7EIX	0.016
120	Indy 120 XC Pro X	2007-00	BR6ES		0.028

Redline

800	Revolt	2004	BR8ES-SOLID	BR8EIX-SOLID	0.025
-----	--------	------	-------------	--------------	-------

Roll-o-flex

440	433S Yamaha		-	BR9EIX-SOLID	0.016
440	433Y Yamaha		BR7HS	BR7HIX	0.024
396	396Y Yamaha		BR7HS	BR7HIX	0.024
338	338S Yamaha		-	BR9EIX-SOLID	0.016
338	338Y Yamaha		BR7HS	BR7HIX	0.024
292	292S Yamaha		-	BR9EIX-SOLID	0.016
292	292Y Yamaha		BR8ES-SOLID	BR8EIX	0.024

Rupp

See also: Kohler Xenoa

650	TR-650		BR9HS	BR9HIX	0.020
650	TR-650 (CDI) (1/2" Reach)		BUHX		
650	TR-650 (CDI) (3/4" Reach)		BUE		
650	TR-650S		BR9HS	BR9HIX	0.020
650	TR-650S (CDI) (1/2" Reach)		BUHX		
650	TR-650S (CDI) (3/4" Reach)		BUE		
440	TR-440		BR8HS	BR8HIX	0.020
440	TR-440S		BR9HS	BR9HIX	0.020
400	TR-400S		BR8HS	BR8HIX	0.020
340	TR-340		BR8HS	BR8HIX	0.020
340	TR-340S		BR9HS	BR9HIX	0.020
295	TR-295		BR8HS	BR8HIX	0.020
295	TR-295S		BR9HS	BR9HIX	0.020

CC	Model	Year	Regular Plug	Premium Plug	Gap
Sachs					
740	SA2-740		AB7		0.020
740	SA2-740C		AB8		0.020
650	SA3-650RX		BR9ES-SOLID	BR9EIX-SOLID	0.020
440	SA2-404RX		BR9ES-SOLID	BR9EIX-SOLID	0.020
440	SA2-440 (1/2" Reach)		BR8HS	BR8HIX	0.020
440	SA2-440 (3/4" Reach)		BR8ES-SOLID	BR8EIX	0.020
440	SA2-440C (1/2" Reach)		BR8HS	BR8HIX	0.020
440	SA2-440C (3/4" Reach)		BR8ES-SOLID	BR8EIX	0.020
440	SA2-441		BR9ES-SOLID	BR9EIX-SOLID	0.020
400	SA400		AB8		0.020
370	SA370		AB7		0.020
340	SA2-340 (1/2" Reach)		BR8HS	BR8HIX	0.020
340	SA2-340 (3/4" Reach)		BR8ES-SOLID	BR8EIX	0.020
340	SA2-340C		BR9ES-SOLID	BR9EIX-SOLID	0.020
340	SA2-340RX		BR9ES-SOLID	BR9EIX-SOLID	0.020
340	SA340		AB7		0.020
340	SA340C		BR8HS	BR8HIX	0.020
340	SA340R		BR8HS	BR8HIX	0.020
340	SA340SS		AB8		0.020
320	SA320		AB7		0.020
300	KM914		BR7HS	BR7HIX	0.020
290	KM24 (1/2" Reach)		BR8HS	BR8HIX	0.020
290	KM24 (3/4" Reach)		BR8ES-SOLID	BR8EIX	0.020
290	SA2-290 (1/2" Reach)		BR8HS	BR8HIX	0.020
290	SA2-290 (3/4" Reach)		BR8ES-SOLID	BR8EIX	0.020
290	SA290		AB7		0.020
290	SA290C		BR8HS	BR8HIX	0.020
290	SA290R		BR8HS	BR8HIX	0.020
290	SA290SS		BR8HS	BR8HIX	0.020
280	SA280, SA280A		AB7		0.020
Scorpion					
440	Suzuki AF44L3		BR9ES-SOLID	BR9EIX-SOLID	0.020
440	440		BR8ES-SOLID	BR8EIX	0.020
400	2F400-A		BR8ES-SOLID	BR8EIX	0.020
400	400		BR8ES-SOLID	BR8EIX	0.020
340	2F340-6	1980	BR7ES	BR7EIX	0.020
340	2F340-6	1979	BR7ES	BR7EIX	0.020
340	340		BR8ES-SOLID	BR8EIX	0.020
340	2F340-6		BR8ES-SOLID	BR8EIX	0.020
295	2F295-2	1979	BR7ES	BR7EIX	0.020
295	2F295-2	1978	BR9ES-SOLID	BR9EIX-SOLID	0.020
295	295		BR8ES-SOLID	BR8EIX	0.020
Ski-Doo					
1500	Elite	2005-04	DCPR8E		0.030
1000	Expedition	2006-05	DCPR8E	DCPR8EIX	0.032
1000	Grand Tour Sport	2003	DCPR8E	DCPR8EIX	0.032
1000	Legend	2007-04	DCPR8E	DCPR8EIX	0.032
1000	Legend	2003	BR9ECS-5	BR9ECSIX-5	0.018
1000	Mach Z	2007-05	BR9ECS		0.032
1000	MXZ	2007-06	BR8ECS		0.032
1000	Summit Highmark	2007-05	BR8ECS		0.032
800	Expedition	2007	DCPR8E	DCPR8EIX	0.032
800	Formula III	2000-99	BR9ES-SOLID	BR9EIX-SOLID	0.020
800	Grand Touring SE	2000-99	BR10ES-SOLID	BR10EIX-SOLID	0.016
800	Grand Touring SE	2003-02	BR9ECS-5		0.018
800	Grand Touring SE	2001	BR9ES-SOLID	BR9EIX-SOLID	0.020
800	GSX	2007-06	BR9ECS	BR9ECSIX	0.032
800	GSX	2005-04	BR9ECS-5		0.018
800	GTX	2007	BR9ECS	BR9ECSIX	0.032
800	GTX	2006-05	BR9ECS-5	BR9ECSIX-5	0.032
800	Legend	2004-02	BR9ECS		0.032
800	Mach Z	2004-03	BR9ECS-5		0.018
800	Mach Z	2002-00	BR9ES-SOLID	BR9EIX-SOLID	0.020
800	Mach Z	1999-96	BR10ES-SOLID	BR10EIX-SOLID	0.016
800	Mach Z	1995-94	BR9ES-SOLID	BR9EIX-SOLID	0.020
800	MXZ	2007-06	BR9ECS	BR9ECSIX	0.032
800	MXZ	2006-02	BR9ECS-5		0.018
800	MXZ	2001-00	BR9ES-SOLID	BR9EIX-SOLID	0.020
800	Skandic /Tundra	2007	DCPR8E	DCPR8EIX	0.032
800	Summit	2007	BR9ECS	BR9ECSIX	0.028
800	Summit	2006-02	BR9ECS-5		0.018
800	Summit	2001-00	BR9ES-SOLID	BR9EIX-SOLID	0.020
775	Maxh Z	1996-93	BR10ES-SOLID	BR10EIX-SOLID	0.016
775	TNT	1972-71	AB8		0.020
700	Formula	2001-99	BR9ES-SOLID	BR9EIX-SOLID	0.016

CC	Model	Year	Regular Plug	Premium Plug	Gap
700	Grand Touring	2001-98	BR9ES-SOLID	BR9EIX-SOLID	0.016
700	Grand Touring	2003-02	BR9ECS-5		0.018
700	Grand Touring SE	1997	BR10ES-SOLID	BR10EIX-SOLID	0.016
700	Grand Touring SE	1995-94	BR9ES-SOLID	BR9EIX-SOLID	
700	Legend	2004-02	BR9ECS-5		0.018
700	Mach I	1999-98	BR9ES-SOLID	BR9EIX-SOLID	0.020
700	Mach I	1997	BR10ES-SOLID	BR10EIX-SOLID	0.016
700	Mach I	1995-94	BR9ES-SOLID	BR9EIX-SOLID	0.020
700	MXZ	2001-99	BR9ES-SOLID	BR9EIX-SOLID	0.020
700	MXZ	2003-02	BR9ECS-5		0.018
700	Summit	2001-00	BR9ES-SOLID	BR9EIX-SOLID	0.020
700	Summit	2003-02	BR9ECS-5		0.018
670	Formula	2000-98	BR9ES-SOLID	BR9EIX-SOLID	0.016
670	Formula	1996-94	BR9ES-SOLID	BR9EIX-SOLID	0.016
670	Grand Touring SE	1997-95	BR9ES-SOLID	BR9EIX-SOLID	0.016
670	Mach I	1997-96	BR10ES-SOLID	BR10EIX-SOLID	0.016
670	Mach I	1995-93	BR9ES-SOLID	BR9EIX-SOLID	0.020
670	Mach I	1998	BR9ES-SOLID	BR9EIX-SOLID	0.020
670	MXZ	1994	BR9ES-SOLID	BR9EIX-SOLID	
670	MXZ H.O.	1999-97	BR9ES-SOLID	BR9EIX-SOLID	0.016
670	Summit	1999-95	BR9ES-SOLID	BR9EIX-SOLID	0.020
640	Alpine	1981-79	AB7		0.020
640	Alpine	1977-73	AB7		0.020
640	Alpine	1972-70	AB8		0.020
640	Alpine	1982	BR8ES-SOLID	BR8EIX-SOLID	0.020
640	Alpine	1978	BR7HS	BR7HIX	0.020
640	Nordic	1974-73	AB7		0.020
640	Nordic	1972-70	AB8		0.020
640	TNT	1972-70	AB8		0.020
640	Valmont	1971	AB8		0.020
620	Formula Mach I	1992-91	BR9ES-SOLID	BR9EIX-SOLID	0.016
600	Expedition	2007-05	BR9ECS	BR9ECSIX	0.032
600	Formula	2001-98	BR9ES-SOLID	BR9EIX-SOLID	0.016
600	Formula III	1997-96	BR10EYA	BR10EIX-SOLID	0.022
600	Grand Touring	2003-02	BR9ECS-5		0.018
600	Grand Touring	2001	BR9ES-SOLID	BR9EIX-SOLID	0.016
600	GSX	2007-04	BR9ECS-5		0.018
600	GSX - SDI	2007-06	BR8ECS		0.032
600	GSX - SDI	2005-04	BR9ECS		0.032
600	GTX	2007	BR9ECS	BR9ECSIX	0.032
600	GTX	2006-05	BR9ECS-5	BR9ECSIX-5	0.018
600	GTX - SDI	2007-06	BR8ECS		0.032
600	GTX - SDI	2005	BR9ECS	BR9ECSIX	0.032
600	Legend	2004-02	BR9ECS		0.032
600	MXZ	2006-04	BR9ECS-5		0.018
600	MXZ	2001-99	BR9ES-SOLID	BR9EIX-SOLID	0.016
600	MXZ Adrenaline	2006-04	BR9ECS-5	BR9ECSIX-5	0.018
600	MXZ Adrenaline SDI	2007-06	BR8ECS		0.032
600	MXZ Adrenaline SDI	2005	BR9ECS-5	BR9ECSIX-5	0.018
600	MXZ SDI	2007	BR8ECS		0.032
600	MXZ SDI	2006-04	BR9ECS	BR9ECSIX	0.032
600	Skandic	2007-04	BR9ECS-5	BR9ECSIX-5	0.018
600	Skandic LC	2004-02	BR9ECS-5		0.018
600	Skandic LC	2001	BR9ES-SOLID	BR9EIX-SOLID	0.016
600	Summit	2007-06	BR8ECS		0.032
600	Summit	2005-02	BR9ECS-5	BR9ECSIX-5	0.018
600	Summit	2001-99	BR9ES-SOLID	BR9EIX-SOLID	0.016
583	Formula Deluxe	2000-99	BR9ES-SOLID	BR9EIX-SOLID	0.020
583	Formula STX	1998-94	BR9ES-SOLID	BR9EIX-SOLID	0.016
583	Formula Z	2000-99	BR9ES-SOLID	BR9EIX-SOLID	0.020
583	Formula Z	1998-94	BR9ES-SOLID	BR9EIX-SOLID	0.016
583	Grand Touring	2000-93	BR9ES-SOLID	BR9EIX-SOLID	0.020
583	MXZ	1997-96	BR9ES-SOLID	BR9EIX-SOLID	0.020
583	Plus	1993	BR9ES-SOLID	BR9EIX-SOLID	0.020
583	Summit	1998-94	BR9ES-SOLID	BR9EIX-SOLID	0.016
550	Adventure	2007	BR9ES-SOLID	BR9EIX-SOLID	0.020
550	Expedition	2007-05	BR9ES-SOLID	BR9EIX-SOLID	0.020
550	Freestyle	2007	BR9ES-SOLID	BR9EIX-SOLID	0.020
550	Grand Touring FC	2003-02	BR9ES-SOLID	BR9EIX-SOLID	0.020
550	GSX	2007-05	BR9ECS-5	BR9ECSIX-5	0.018
550	GTX	2007-05	BR9ECS-5	BR9ECSIX-5	0.018
550	Legend FC	2004-03	BR9ES-SOLID	BR9EIX-SOLID	0.018
550	MX Z FAN	2008-04	BR9ES-SOLID	BR9EIX-SOLID	0.018
550	Skandic	2007-04	BR9ES-SOLID	BR9EIX-SOLID	0.018
550	Summit FC	2007-05	BR9ES-SOLID	BR9EIX-SOLID	0.016
550	Summit FC	2004-03	BR9ES-SOLID	BR9EIX-SOLID	0.020
520	Blizzard 9700	1984-83	BR8ES-SOLID	BR8EIX-SOLID	0.016

CC	Model	Year	Regular Plug	Premium Plug	Gap
520	Formula Mach I	1990-89	BR9ES-SOLID	BR9EIX-SOLID	0.016
520	Formula Plus	1992-85	BR9ES-SOLID	BR9EIX-SOLID	0.016
520	Safari LC	1986-85	BR8ES-SOLID	BR8EIX-SOLID	0.016
500	Alpine 503	1987-83	BR7ES	BR7EIX	0.016
500	Alpine II	1994-88	BR8ES-SOLID	BR8EIX-SOLID	0.020
500	Alpine II	1995	BR8ES-SOLID	BR8EIX-SOLID	0.016
500	Alpine II	1993	BR9ES-SOLID	BR9EIX-SOLID	0.020
500	Alpine IV	1990	DR7EA	DR7EIX	0.025
500	Blizzard 5500 MX	1983-79	BR8ES-SOLID	BR8EIX-SOLID	0.016
500	Blizzard 5500 MX	1984	BR7ES	BR7EIX	0.020
500	Cheyenne	1992-89	BR9ES-SOLID	BR9EIX-SOLID	0.016
500	Escapade	1989-87	BR9ES-SOLID	BR9EIX-SOLID	0.016
500	Everest	1983-82	BR7ES	BR7EIX	0.016
500	Everest	1981-80	BR8ES-SOLID	BR8EIX-SOLID	0.016
500	Formula	1998-97	BR9ES-SOLID	BR9EIX-SOLID	0.020
500	Formula Deluxe	2000-99	BR9ES-SOLID	BR9EIX-SOLID	0.016
500	Formula Dlx F/C	2001	BR9ES-SOLID	BR9EIX-SOLID	0.016
500	Formula Dlx LC	2001	BR9ES-SOLID	BR9EIX-SOLID	0.020
500	Formula SL	1999-95	BR9ES-SOLID	BR9EIX-SOLID	0.020
500	Formula SLS	1996	BR9ES-SOLID	BR9EIX-SOLID	0.020
500	Formula Z	2000-99	BR9ES-SOLID	BR9EIX-SOLID	0.016
500	Grand Touring	2001-96	BR9ES-SOLID	BR9EIX-SOLID	0.016
500	Grand Touring Fan	2002	BR9ES-SOLID	BR9EIX-SOLID	0.020
500	Grand Touring LC	2002	BR9ECS-5		0.018
500	GSX	2006-04	BR9ECS-5		0.018
500	Legend Fan	2002	BR9ES-SOLID	BR9EIX-SOLID	0.020
500	Legend LC	2004-02	BR9ECS-5		0.018
500	MXZ Fan	2003-01	BR9ES-SOLID	BR9EIX-SOLID	0.020
500	MXZ LC	2004-02	BR9ECS-5		0.018
500	Nordik 60	1991-87	BR8ES-SOLID	BR8EIX-SOLID	0.016
500	Safari Voyager	1994-87	BR9ES-SOLID	BR9EIX-SOLID	0.016
500	Skandic	2003-93	BR9ES-SOLID	BR9EIX-SOLID	0.016
500	Skandic	1987	BR9ES-SOLID	BR9EIX-SOLID	0.016
500	Skandic LC	2003-02	BR9ECS-5		0.018
500	Skandic LC	2000-97	BR9ES-SOLID	BR9EIX-SOLID	0.020
500	Stratos	1989-87	BR9ES-SOLID	BR9EIX-SOLID	0.016
500	Summit	1997-96	BR9ES-SOLID	BR9EIX-SOLID	0.020
500	Summit	1999	BR9ES-SOLID	BR9EIX-SOLID	0.016
500	Summit Fan	2003-01	BR9ES-SOLID	BR9EIX-SOLID	0.020
500	Touring Fan	2001-95	BR9ES-SOLID	BR9EIX-SOLID	0.016
500	Touring LC	2000-95	BR9ES-SOLID	BR9EIX-SOLID	0.020
470	Elite 464	1982	BR7HS	BR7HIX	0.016
470	Elite 464	1981	BR8ES-SOLID	BR8EIX-SOLID	0.016
470	Everest 464	1983-80	BR8ES-SOLID	BR8EIX-SOLID	0.016
470	Formula	1994-85	BR9ES-SOLID	BR9EIX-SOLID	0.016
470	Formula SP	1986-85	BR8ES-SOLID	BR8EIX-SOLID	0.016
470	Formula SS	1986-85	BR8ES-SOLID	BR8EIX-SOLID	0.016
470	Grand Touring	1995	BR9ES-SOLID	BR9EIX-SOLID	0.020
470	MX	1995-94	BR9ES-SOLID	BR9EIX-SOLID	0.016
470	MXZ	1994	BR9ES-SOLID	BR9EIX-SOLID	0.020
470	Safari	1992-90	BR9ES-SOLID	BR9EIX-SOLID	0.016
470	SS 25th Anniv.	1984	BR8ES-SOLID	BR8EIX-SOLID	0.016
470	Summit 470	1994	BR9ES-SOLID	BR9EIX-SOLID	0.020
444	Elite	1980-78	BR8ES-SOLID	BR8EIX-SOLID	0.020
444	Everest LC	1979-78	BR8ES-SOLID	BR8EIX-SOLID	0.020
440	Blizzard 9500	1982-80	BR9ES-SOLID	BR9EIX-SOLID	0.020
440	Blizzard 9500	1979	BR10EYA	BR10EIX-SOLID	0.020
440	Elite	1975-73	AB7		0.020
440	Everest	1979-74	AB8		0.020
440	MXZ	2007-04	BR9ECS-5	BR9ECSIX-5	0.018
440	MXZ	2003-95	BR9ES-SOLID	BR9EIX-SOLID	0.016
440	Nordic	1972	AB7		0.020
440	Nordik 50	1991-88	BR9ES-SOLID	BR9EIX-SOLID	0.016
440	Olympique	1974-73	AB7		0.020
440	Olympique	1977	AB8		0.020
440	Olympique	1976	BR7HS	BR7HIX	0.020
440	Safari	1992-90	BR9ES-SOLID	BR9EIX-SOLID	0.016
440	Safari	1986-84	BR9ES-SOLID	BR9EIX-SOLID	0.016
440	Skandic	2007-01	BR9ES-SOLID	BR9EIX-SOLID	0.018
440	TNT	1978-77	AB8		0.020
440	TNT	1975-71	AB8		0.020
440	TNT FA	1975-74	BR8ES-SOLID	BR8EIX-SOLID	0.020
440	TNT FA	1977	BR8ES-SOLID	BR8EIX-SOLID	0.020
440	Touring LE	2000-96	BR9ES-SOLID	BR9EIX-SOLID	0.016
440	Valmont	1973-72	AB7		0.020
399	Alpine	1971	AB7		0.020
399	Alpine	1970	BR7HS	BR7HIX	0.020

CC	Model	Year	Regular Plug	Premium Plug	Gap
399	Nordic	1971	AB7		0.020
399	Nordic	1970	BR7HS	BR7HIX	0.020
399	Olympique	1974-71	AB7		0.020
399	Olympique	1970	BR7HS	BR7HIX	0.020
399	TNT	1970	BR8HS	BR8HIX	0.020
399	TNT FA	1974-73	BR8ES-SOLID	BR8EIX-SOLID	0.020
380	Citation 4500	1983-80	BR8ES-SOLID	BR8EIX-SOLID	0.016
380	Citation SS	1983-80	BR8ES-SOLID	BR8EIX-SOLID	0.016
380	Formula	2001-87	BR9ES-SOLID	BR9EIX-SOLID	0.020
380	Grand Touring	2003-02	BR9ES-SOLID	BR9EIX-SOLID	0.020
380	GSX	2006-05	BR9ES-SOLID	BR9EIX-SOLID	0.020
380	GTX	2006-05	BR9ES-SOLID	BR9EIX-SOLID	0.020
380	Legend	2004-02	BR9ES-SOLID	BR9EIX-SOLID	0.018
380	MXZ Fan	2006-01	BR9ES-SOLID	BR9EIX-SOLID	0.018
380	Nordik	1983-82	BR8ES-SOLID	BR8EIX-SOLID	0.016
380	Safari	1994-84	BR9ES-SOLID	BR9EIX-SOLID	0.016
380	Scout	1987-82	BR8ES-SOLID	BR8EIX-SOLID	0.016
380	Skandic	2000-93	BR9ES-SOLID	BR9EIX-SOLID	0.016
380	Skandic	1987-82	BR8ES-SOLID	BR8EIX-SOLID	0.016
380	Touring	2002-95	BR9ES-SOLID	BR9EIX-SOLID	0.020
370	Summit	2006	BR9ES-SOLID	BR9EIX-SOLID	0.016
340	Blizzard 6500	1978	BR10EYA	BR10EIX-SOLID	0.020
340	Blizzard 7500	1981-80	BR9ES-SOLID	BR9EIX-SOLID	0.020
340	Blizzard 7500	1979	BR10EYA	BR10EIX-SOLID	0.020
340	Everest	1979-78	BR9HS	BR9HIX	0.020
340	Everest	1977	BR8HS	BR8HIX	0.020
340	Olympique	1977-75	BR8HS	BR8HIX	0.020
340	Olympique	1974	BR7HS	BR7HIX	0.020
340	Olympique	1973	BR8HS	BR8HIX	0.020
340	TNT	1976-74	BR8HS	BR8HIX	0.020
340	TNT (1 cyl)	1971-70	AB8		0.020
340	TNT	1973	BR9HS	BR9HIX	0.020
340	TNT	1972	BR8HS	BR8HIX	0.020
340	TNT FA	1978-77	BR8ES-SOLID	BR8EIX	0.020
340	TNT FA	1975-73	BR8ES-SOLID	BR8EIX	0.020
340	TNT RV	1978-76	BR8ES-SOLID	BR8EIX	0.020
340	TNT SE	1974	BR7HS	BR7HIX	0.020
335	Olympique	1973-70	AB7		0.020
335	Skandic	1973-71	AB7		0.020
300	Citation	1979	BR8HS	BR8HIX	0.020
300	Citation	1978	BR9HS	BR9HIX	0.020
300	Elan	1975-74	BR8HS	BR8HIX	0.020
300	Olympique (2 cyl)	1977-76	BR8HS	BR8HIX	0.020
300	Olympique	1974-73	AB6		0.020
300	Olympique	1972-70	AB7		0.020
300	Olympique	1978	BR9HS	BR9HIX	0.020
300	Olympique	1977	AB6		0.020
300	Olympique	1976	AB7		0.020
300	Olympique	1975	BR7HS	BR7HIX	0.020
294	TNT	1973	BR8HS	BR8HIX	0.020
292	Elan	1975-74	BR8HS	BR8HIX	0.020
292	TNT	1972-70	AB8		0.020
280	Skandic Tundra LC	2004-03	BR9ECS-5	BR9ECSIX-5	0.018
277	Citation 3500	1984-80	BR8ES-SOLID	BR8EIX-SOLID	0.016
277	Freestyle	2007-06	BR9ES-SOLID	BR9EIX-SOLID	0.020
277	Skandic	2002	BR9ES-SOLID	BR9EIX-SOLID	0.020
277	Skandic	1983	BR8ES-SOLID	BR8EIX-SOLID	0.016
277	Skandic Tundra	2007	BR8ES-SOLID	BR8EIX-SOLID	0.016
277	Tundra	2006-03	BR9ES-SOLID	BR9EIX-SOLID	0.020
277	Tundra	2000-98	BR10ES-SOLID	BR10EIX-SOLID	0.020
277	Tundra	1995-94	BR9ES-SOLID	BR9EIX-SOLID	0.016
250	Citation	1992-85	BR9ES-SOLID	BR9EIX-SOLID	0.016
250	Elan (1 cyl)	1995-73	AB6		0.020
250	Elan (2 cyl)	1979-73	BR7HS	BR7HIX	0.020
250	Elan	1972-71	AB7		0.020
250	Elan SS (2 cyl)	1973	BR8HS	BR8HIX	0.020
250	Safari Citation	1992-89	BR9ES-SOLID	BR9EIX-SOLID	0.016
250	TNT RV	1976	BR9HS	BR9HIX	0.020
250	Tundra	1993-85	BR9ES-SOLID	BR9EIX-SOLID	0.016
120	Mini Z	2004-98	BPR6ES	BPR6EIX	0.030

Skiroule See also: C CW, Kohler, Sachs

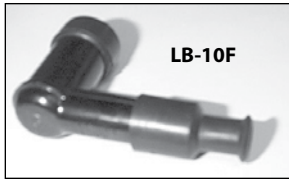
440	Laser	BUE		
440	Ultra 440	BUE		
340	Laser	BUE		
340	Ultra 340	BUE		
300	KB300	BR8ES-SOLID	BR8EIX	0.020
300	KS300	BR8ES-SOLID	BR8EIX	0.020

CC	Model	Year	Regular Plug	Premium Plug	Gap
Sno Jet					
443	Y443		BR7HS	BR7HIX	0.020
440	Astro		BR8ES-SOLID	BR8EIX	0.028
433	S433	1976		BR9EIX-SOLID	0.020
433	S433	1975	BR8ES-SOLID	BR8EIX	0.016
433	SST440		BR9ES-SOLID	BR9EIX-SOLID	0.020
433	SX433		BR9ES-SOLID	BR9EIX-SOLID	0.016
340	Astro		BR8ES-SOLID	BR8EIX	0.028
340	SST340		BR9ES-SOLID	BR9EIX-SOLID	0.020
338	S338		BR8ES-SOLID	BR8EIX	0.016
338	SX338		BR9ES-SOLID	BR9EIX-SOLID	0.016
338	Y338		BR7HS	BR7HIX	0.020
292	S292		BR9ES-SOLID	BR9EIX-SOLID	0.016
292	Y292		BR8ES-SOLID	BR8EIX	0.020
Suzuki					
440	SM440M		BR9ES-SOLID	BR9EIX-SOLID	0.020
440	XR-440		BR7HS	BR7HIX	0.020
400	SM20		BR7HS	BR7HIX	0.020
400	SM20 Hop-Up Kit		BR8ES-SOLID	BR8EIX	0.020
400	Wide Track		BR7HS	BR7HIX	0.020
400	XR-400		BR7HS	BR7HIX	0.020
360	SM10, SM10D		BR7HS	BR7HIX	0.020
340	Nomad		BR7HS	BR7HIX	0.020
292	Nomad		BR7HS	BR7HIX	0.020
Three R Industries					
725	Trail Roamer		BKR5E	BKR5EIX	0.024
Trail Manta					
500	500 L/C		BR9ES-SOLID	BR9EIX-SOLID	0.032
440	440 L/C		BR9ES-SOLID	BR9EIX-SOLID	0.032
340	EC34PL		BR9ES-SOLID	BR9EIX-SOLID	0.020
Xeniah					
440	Xeniah LC		BUE		
340	Xeniah FC		BR8ES-SOLID	BR8EIX	0.024
340	Xeniah LC		BUE		
Yamaha					
1000	RX-1, all models	2005-03	CR9E	CR9EIX	0.030
1000	RX10, Apex	2007-06	CR9EB	CR9EIX	0.028
1000	RXW10, Attak	2006	CR9EB	CR9EIX	0.028
1000	RS90NW, Nytro	2007	CR8E	CR8EIX	0.028
1000	VK10L, Professional	2006	CR8E	CR8EIX	0.028
1000	RSG90L, Rage	2006	CR8E	CR8EIX	0.028
1000	RSG90K, RS Rage	2005	CR8E	CR8EIX	0.028
1000	RST90L, RS Venture	2005	CR8E	CR8EIX	0.028
1000	RS90RK, Vector	2005	CR8E	CR8EIX	0.028
1000	RST90K, Venture	2005	CR8E	CR8EIX	0.028
1000	RX, Warrior	2005-04	CR9E	CR9EIX	0.030
1000	RS90	2007-06	CR8E	CR8EIX	0.028
800	Mountain Max	1997-96	BR9ES-SOLID	BR9EIX-SOLID	0.028
800	V-Max-4	1997-95	BR9ES-SOLID	BR9EIX-SOLID	0.028
750	V-Max-4	1994-92	BR9ES-SOLID	BR9EIX-SOLID	0.028
700	Mountain Max	2003-00	BR9ES-SOLID	BR9EIX-SOLID	0.028
700	Mountain Max	1999	BR9ECS	BR9ECSIX	0.028
700	Mountain Max	1998	BR9ES-SOLID	BR9EIX-SOLID	0.028
700	SRX	2002-98	BR9ECS	BR9ECSIX	0.028
700	SX, SX Venom	2004	BR9ES-SOLID	BR9EIX-SOLID	0.028
700	SX, SX-R	2001-00	BR9ES-SOLID	BR9EIX-SOLID	0.028
700	SXV700ER, SXVIPER ER	2004-02	BR9ES-SOLID	BR9EIX-SOLID	0.028
700	SXViper Mountain	2006-03	BR9ES-SOLID	BR9EIX-SOLID	0.028
700	SXViper S	2004-02	BR9ES-SOLID	BR9EIX-SOLID	0.028
700	SXViper ER	2004-02	BR9ES-SOLID	BR9EIX-SOLID	0.028
700	VT700, Venture	2004-00	BR9ES-SOLID	BR9EIX-SOLID	0.028
700	Venture	1999	BR9ECS	BR9ECSIX	0.028
700	Venture	1998	BR9ES-SOLID	BR9EIX-SOLID	0.028
700	VX700, V-Max	2002-00	BR9ES-SOLID	BR9EIX-SOLID	0.028
700	VX700, V-Max	1999-98	BR9ECS	BR9ECSIX	0.028
700	VX700SX, V-Max SX	1999-98	BR9ES-SOLID	BR9EIX-SOLID	0.028
643	EW643, GP643	1973-72	BR9ES-SOLID	BR9EIX-SOLID	0.020
643	SR643		BR9ES-SOLID	BR9EIX-SOLID	0.016
600	Mountain Max	2002-00	BR9ES-SOLID	BR9EIX-SOLID	0.028
600	Mountain Max	1999	BR9ECS	BR9ECSIX	0.028
600	Mountain Max	1998	BR9ES-SOLID	BR9EIX-SOLID	0.028
600	SRX	1999-98	BR10ECS		0.028
600	SRX	1999	BR9ECS	BR9ECSIX	0.028
600	SX-R	2003-00	BR9ES-SOLID	BR9EIX-SOLID	0.028
600	Venture	2003-00	BR9ES-SOLID	BR9EIX-SOLID	0.028

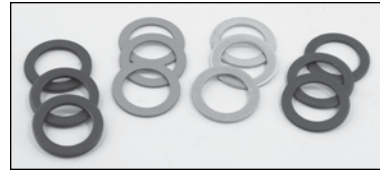
CC	Model	Year	Regular Plug	Premium Plug	Gap
600	Venture	1999	BR9ECS	BR9ECSIX	0.028
600	Venture	1998	BR9ECS	BR9ECSIX	0.028
600	Venture	1997	BR9ES-SOLID	BR9EIX-SOLID	0.028
600	Vmax	2003-02	BR9ES-SOLID	BR9EIX-SOLID	0.028
600	V-Max	2001-00	BR9ES-SOLID	BR9EIX-SOLID	0.028
600	V-Max	1999	BR9ECS	BR9ECSIX	0.028
600	V-Max	1998	BR9ES-SOLID	BR9EIX-SOLID	0.028
600	V-Max SX	1999-98	BR9ECS	BR9ECSIX	0.028
570	Exciter	1993-87	BR9ES-SOLID	BR9EIX-SOLID	0.028
540	SRV	1991-80	BR9ES-SOLID	BR9EIX-SOLID	0.028
540	VK540E	2005-89	BR9ES-SOLID	BR9EIX-SOLID	0.028
540	VK 540 II	2004	BR9ES-SOLID	BR9EIX-SOLID	0.028
540	VK 540 III	2005-02	BR9ES-SOLID	BR9EIX-SOLID	0.028
540	V-Max	1987-83	BR9ES-SOLID	BR9EIX-SOLID	0.028
540	XLV		BR9ES-SOLID	BR9EIX-SOLID	0.028
500	PZ50, Phazer	2007	CR9EKB		0.032
500	SX	2001-00	BR9ES-SOLID	BR9EIX-SOLID	0.028
500	Venture	2001-00	BR9ES-SOLID	BR9EIX-SOLID	0.028
500	Venture	1999	BR9ECS		0.028
500	Venture	1999	BR9ECS		0.028
500	Venture	1998	BR9ES-SOLID	BR9EIX-SOLID	0.028
500	V-Max	2001-00	BR9ES-SOLID	BR9EIX-SOLID	0.028
500	V-Max	1999	BR9ECS		0.028
500	V-Max	1999	BR9ECS		0.028
500	V-Max SX	1999	BR9ECS		0.028
500	XT	1998	BR9ES-SOLID	BR9EIX-SOLID	0.028
485	Phazer	2001-00	BR9ES-SOLID	BR9EIX-SOLID	0.028
485	Phazer	1989-84	BR9ES-SOLID	BR9EIX-SOLID	0.028
485	Phazer	1999	BR9ECS		0.028
485	Phazer II	1996-90	BR9ES-SOLID	BR9EIX-SOLID	0.028
485	Phazer Mtn. Lite	1999	BR9ECS		0.028
485	Phazer SS	1998-97	BR9ECS		0.028
485	Venture	1998-91	BR9ES-SOLID	BR9EIX-SOLID	0.028
440	Exciter	1981-76	BR9ES-SOLID	BR9EIX-SOLID	0.020
440	GP440			BR8EIX	0.020
440	SRX	1980-76	BR9ES-SOLID	BR9EIX-SOLID	0.020
440	SRX	1981	BR9ES-SOLID	BR9EIX-SOLID	0.028
440	SS	1984-80	BR9ES-SOLID	BR9EIX-SOLID	0.028
433	EL433		BR7HS	BR7HIX	0.020
433	EW433		BR7HS	BR7HIX	0.020
433	GP433		BR8ES-SOLID	BR8EIX	0.016
433	GPX433	1975-74	BR9ES-SOLID	BR9EIX-SOLID	0.016
433	SR433		BR9ES-SOLID	BR9EIX-SOLID	0.016
433	SS433		BR9ES-SOLID	BR9EIX-SOLID	0.020
433	SW433		BR7HS	BR7HIX	0.020
433	TL433		BR7HS	BR7HIX	0.020
433	TW433		BR7HS	BR7HIX	0.020
433	SR433, SR433C		BR9ES-SOLID	BR9EIX-SOLID	0.016
410	ET410TR	2004-03	BR9ES-SOLID	BR9EIX-SOLID	0.028
410	ET410TRN-S		BR8ES-SOLID	BR8EIX-SOLID	0.028
396	GP396		BR7HS	BR7HIX	0.020
396	SL396		BR7HS	BR7HIX	0.020
396	SW396		BR7HS	BR7HIX	0.020
350	SL350		BR7HS	BR7HIX	0.020
340	Enticer ET340	1990-78	BR9ES-SOLID	BR9EIX-SOLID	0.028
340	Excel III EC340		BR9ES-SOLID	BR9EIX-SOLID	0.028
340	Exciter EX340	1978-76	BR9ES-SOLID	BR9EIX-SOLID	0.020
340	GS340		BR7HS	BR7HIX	0.020
340	Ovation CS340E	1993-89	BR9ES-SOLID	BR9EIX-SOLID	0.028
338	GP338			BR8EIX	0.016
338	GPX338	1974-75	BR9ES-SOLID	BR9EIX-SOLID	0.016
338	SL338		BR7HS	BR7HIX	0.020
338	SS338		BR9ES-SOLID	BR9EIX-SOLID	0.020
300	CF300		BR8ES-SOLID	BR8EIX-SOLID	0.028
300	Enticer ET300	1984-79	BR9ES-SOLID	BR9EIX-SOLID	0.026
300	GP292		BR9ES-SOLID	BR9EIX-SOLID	0.016
300	GP300			BR8EIX	0.020
292	SL292		BR7HS	BR7HIX	0.020
292	SM292		BR6ES		0.020
292	SR292		B10EGV	BR10EIX	0.016
250	Bravo	2007	BR8HS	BR8HIX	0.024
250	Bravo BR250T	2001-99	BR8HS	BR8HIX	0.024
250	Bravo BR250T	1998-82	BR8HS	BR8HIX	0.024
250	Enticer ET250	1981-77	BR8HS	BR8HIX	0.024
246	GP246		BR7ES	BR7EIX	0.016
125	SV125		BR8HS	BR8HIX	0.028
80	SnoScoot		BR8HS	BR8HIX	0.028

Spark Plug Connectors and Accessories

Spark Plug Connectors



Description	Part #	Price (G)
90° Elbow NGK	LB05EP	\$5.50 ea.
90° Elbow NGK	LB01EP	\$4.55 ea.
Rubber with 90° Elbow NGK	TB05EMA	\$13.95 ea.
90° Long Elbow NGK	LB05EZ	\$5.50 ea.
Non Resistor Type - 90° Short Elbow NGK	LZFH	\$3.95 ea.
Type KLG Universal	001-110-01	\$2.92
Sparky-Spring Type	001-109	\$1.77
90° NGK Style TB05EMA with Resistor - Black	001-109-24	\$7.95
90° NGK Style TB05EMA with Resistor - Red	001-109-22	\$5.99
Cap with 29" wire attached	001-110	\$5.69
NGK-type plug cap	LB-10F	\$2.50
NGK-type plug cap fits on screw of spark plugs. (will not fit solid tipped plugs)	LD-10F	\$2.50

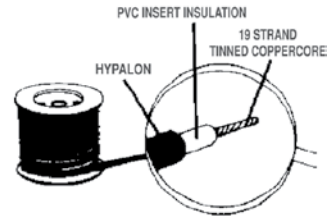


Spark Plug Indexing Washers Anodized Aluminum Colours

Description	Part #	Price (G)
Twin cylinders (8 pc. set)	SM-01047	\$4.11
Triple cylinders (12 pc. set)	SM-01048	\$5.49

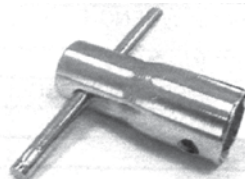
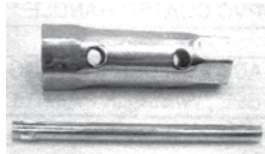


Description	Part #	Price (G)
90° Elbow, Solid Tip, 50 cm long	CR4	\$19.95
90° Elbow, Solid Tip, 100 cm long	CR6	\$19.95
Splicer (must be ordered separately)	J1	\$6.95

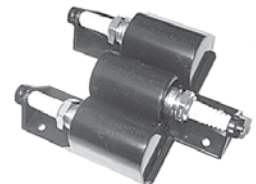
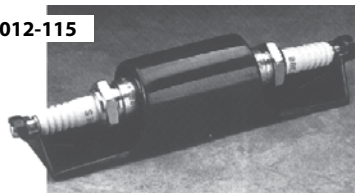


Spark Plug Wire - 7 mm

Part #	Price (G)
001-114-01	\$59.95 /100 ft. roll
001-114-02	\$0.60 / ft.



012-115



012-114



Spark Plug Wrenches

Description	Part #	Price (G)
14mm & 18mm Plugs	012-121	\$4.93
Heavy Duty 14mm & 18mm Plugs	012-121-01	\$5.95
10mm, 12mm, & 14mm	013-0013	\$4.35
Ratchet for 14 mm Spark Plugs	108-147	\$15.35

Spark Plug Jack or Carrier

Description	Part #	Price (G)
Holds 2x14mm	012-115	\$6.99
Holds 2x14mm	012-114	\$3.85
Holds 2x14mm	SM-12023	\$6.55
Holds 3x14mm	012-115-01	\$9.85