

# Drive System

## 05

### contents

<i>ATV Clutch Kits – EPI</i> .....	128
<i>ATV Clutch Kits – Dalton</i> .....	146
<i>Clutch Springs</i> .....	141
<i>Clutch Weights</i> .....	142
<i>ATV Progressive Helixes</i> .....	143
<i>ATV Clutch Rebuild Kits</i> .....	144
<i>ATV Clutches for Polaris</i> .....	158
<i>CVTech ATV Clutches</i> .....	159
<i>ATV Drive Belts</i> .....	160



## EPI Clutch Kits

EPI carries a complete line of clutch kits to work with your machine and your riding style... everything from trail riding and heavy duty hauling/working to mud running with oversized tires.



- Kits are designed to improve the performance on or off the trails without losing the reliability of your ATV/UTV.
- Kits are more efficient in transferring the power of your ATV/UTV down to the tires.
- Kits are also designed to improve low and mid-range acceleration.
- Helps to decrease belt slippage, which will decrease clutch heat.
- Each kit will enhance back shifting and throttle response.
- Each clutch kit has been field tested to assure your satisfaction.
- Kit designed for stock motor and stock exhaust.
- Kit components vary by model and style of kit.

### Sport Utility Kit

- Designed for those who spend most of their time on the trails to give the best overall performance.

### Sand Dune Kit

- Designed for those who spend most of their time in sand dunes to give the best overall performance.

### Economy Kit

- Will help increase performance.

### Utility Kit

- Designed to improve your ATV/UTV's heavy working capacity for those who spend most of their time working or hauling.
- Kit may affect top end speed.

### Mudder Kits

- Designed for those who have 28-29.5" tires and play in sticky clay/gumbo mud.
- This kit is not recommended for trail riding.
- You will see a top speed reduction.

### Big Bore Kits

- Designed for machines that have aftermarket Big Bore Kits.
- Helps keep RPM's under the stock rev limiter to maximize acceleration.

### Competition Stall Kits

- Used in ATV/UTV pulls, drag racing, or large tire mud racing.

### Performance Upgrade Kits

- Replace friction plates for longer lasting, anti-swelling, smoother modulation.
- Increase holeshot acceleration.

### Kits with Belt

- Experience the same enhancements of the clutch kits with the added advantage of a high quality belt.
- Remember: If you are continually blowing belts, your clutches may be getting too hot. Improving your clutching with a clutch kit will decrease belt slippage and decrease belt heat.

### EPI Severe Duty

- Highest quality belt available.
- Aramid tensil cord (non-cotton) will provide higher load capabilities and less slip.
- Double cog style helps reduce clutch heat.
- Close tolerances provide consistent operation.
- Exacting specifications, measurements, and dimensions provide consistent clutch operation.

### Super Duty

- Aramid cord construction for strength.
- Double cog style belt helps reduce clutch heat.
- Neoprene compounding.
- Close tolerance due to dedicated drum construction gives clutching efficiency.
- Designed for higher hp and Big Bore ATV/UTVs.

### Kits for Oversized Tires/Paddle Tires

- Oversized tire kits are designed to work with aggressive (taller, wider, heavier) 27-28" tires or 27-28" paddle tires.
- Pulls easier in tough conditions or in the mud.
- May affect top end speed.

### Kits with Tracks

- Designed to work on machines with tracks.
- Pulls easier in tough conditions.
- May affect top end speed.

### Kits with Adjustable Weights

- Comes with EPI's new style adjustable roller weights.
- Start with the "host" and adjust the grams of the weight by changing out the insert.
- Adjustable weight kit saves you wrenching time.

### Kits with Ignition Module

- Kit designed to work with ignition modules.



## Mudder Clutch Kits

- Designed for those who have 28-29.5" tires and play in sticky clay/gumbo mud.
- This kit is not recommended for trail riding.
- You will see a top speed reduction.

## Sand Dune Clutch Kits

- Designed for those who spend most of their time in sand dunes to give the best overall performance.

Model	Year	Elevation	Mudder Clutch Kits		Sand Dune Clutch Kits			
			28-29.5" Tire		Stock Tire		27-28" Paddle	
			Part #	Price (F)	Part #	Price (F)	Part #	Price (F)
<b>Arctic Cat</b>								
550 H1 EFT 4x4	2009	0-3000'	WE436729	\$238.04	WE436734	\$238.04	WE436735	\$238.04
w/ Severe Duty Belt		0-3000'	WE436740	\$368.99	WE436745	\$368.99	WE436746	\$368.99
650 H1 4x4	2006-07	0-3000' Elev	WE490664	\$238.04	WE490730	\$238.04	WE490731	\$238.04
w/ Severe Duty Belt		0-3000' Elev	WE490677	\$380.89	WE490733	\$380.89	WE490732	\$380.89
650 H1 Prowler 4x4	2006-09	0-3000' Elev	WE490308	\$238.04	WE490734	\$238.04	WE490736	\$238.04
w/ Severe Duty Belt		0-3000' Elev	WE490688	\$380.89	WE490735	\$380.89	WE490737	\$380.89
650 V2 4x4	2004-06	0-3000' Elev	WE492010	\$238.04	WE436094	\$238.04	WE436096	\$238.04
w/ Severe Duty Belt		0-3000' Elev	WE436202	\$380.89	WE436206	\$380.89	WE436207	\$380.89
700 EFI Auto 4x4	2007-08	0-3000' Elev	WE490667	\$238.04	WE490665	\$238.04	WE490666	\$238.04
700 H1 EFI 4x4	2008-09	0-3000' Elev	WE436410	\$238.04	WE436415	\$238.04	WE436416	\$238.04
w/ Severe Duty Belt		0-3000' Elev	WE436422	\$380.89	WE436427	\$380.89	WE436428	\$380.89
700 H1 Prowler 4x4	2008	0-3000' Elev	WE436433	\$238.04	WE436438	CALL	WE436439	\$238.04
w/ Severe Duty Belt		0-3000' Elev	WE436445	\$380.89	WE436450	\$380.89	WE436451	\$380.89
Thunder Cat Auto 4x4	2008	0-3000' Elev	WE436581	\$238.04	WE436586	\$238.04	WE436587	\$238.04



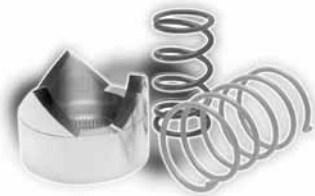
**Mudder Clutch Kits**

- Designed for those who have 28-29.5" tires and play in sticky clay/gumbo mud.
- This kit is not recommended for trail riding.
- You will see a top speed reduction.

**Sand Dune Clutch Kits**

- Designed for those who spend most of their time in sand dunes to give the best overall performance.

Model	Year	Elevation	Mudder Clutch Kits		Sand Dune Clutch Kits			
			28-29.5" Tire		Stock Tire		27-28" Paddle	
			Part #	Price (F)	Part #	Price (F)	Part #	Price (F)
<b>Can-Am</b>								
400 Outlander EFI 4x4	2009	0-3000' Elev	-	-	WE436519	\$238.04	WE436520	\$238.04
400 Outlander 4x4	2003-08	0-3000' Elev	-	-	WE436519	\$238.04	WE436520	\$238.04
500 Outlander EFI 4x4	2009	0-3000' Elev	WE436538	\$238.04	WE436543	\$238.04	WE436544	\$238.04
500 Outlander 4x4	2007-08	0-3000' Elev	WE436538	\$238.04	WE436543	\$238.04	WE436544	\$238.04
500 Renegade EFI 4x4	2009	0-3000' Elev	WE436497	\$238.04	WE436498	\$238.04	WE436499	\$238.04
500 Renegade 4x4	2008	0-3000' Elev	WE436497	\$238.04	WE436498	\$238.04	WE436499	\$238.04
650 Outlander HO EFI 4x4	2007-09	0-3000' Elev	WE436504	\$285.65	WE436509	\$285.65	WE436510	\$285.65
800 Outlander R EFI 4x4	2009	0-3000' Elev	WE436526	\$285.65	WE436531	\$285.65	WE436532	\$285.65
800 Outlander HO EFI 4x4	2006-08	0-3000' Elev	WE436526	\$285.65	WE436531	\$285.65	WE436532	\$285.65
750 King Quad AXI 4x4	2007-08	0-3000' Elev	WE436549	\$285.65	WE436550	\$285.65	WE436551	\$285.65
<b>Kawasaki</b>								
650 Brute Force 4x4	2006-09	0-3000' Elev	AW455650	\$238.04	AW441207	\$238.04	AW418039	\$95.18
w/ Super Duty Belt		0-3000' Elev	AW443050	\$380.89	AW443055	\$380.89	AW443056	\$380.89
650 Brute Force	2005	0-3000' Elev	AW455650	\$238.04	-	-	-	-
w/ Super Duty Belt		0-3000' Elev	AW443028	\$380.89	-	-	-	-
650 Prairie 4x4	2002-03	0-3000' Elev	AW455650	\$238.04	-	-	-	-
w/ Super Duty Belt		0-3000' Elev	AW443035	\$380.89	-	-	-	-
700 KFX 2x4	2003-06	0-3000' Elev	-	-	AW441200	\$238.04	AW441201	\$238.04
w/ Super Duty Belt		0-3000' Elev	-	-	AW443041	\$380.89	AW443042	\$380.89
700 Prairie 4x4	2004-06	0-3000' Elev	AW455700	\$238.04	AW441203	\$238.04	AW441202	\$238.04
w/ Super Duty Belt		0-3000' Elev	AW443065	\$380.89	AW443070	\$380.89	AW443071	\$380.89
750 Brute Force 4x4	2006-07	0-3000' Elev	AW455759	CALL	AW441204	\$238.04	AW441205	\$238.04
w/ Super Duty Belt		0-3000' Elev	AW443080	\$380.89	AW443085	\$380.89	AW443086	\$380.89
750 Brute Force 4x4	2005	0-3000' Elev	AW455750	\$238.04	-	-	-	-
w/ Super Duty Belt		0-3000' Elev	AW443095	\$380.89	-	-	-	-
750 Brute Force EFI 4x4i	2008	0-3000' Elev	AW443104	\$238.04	AW443105	\$238.04	AW443106	\$238.04
w/ Super Duty Belt		0-3000' Elev	AW443111	\$380.89	AW443112	\$380.89	AW443113	\$380.89
750 Teryx 4x4	2008	0-3000' Elev	AW443118	\$238.04	AW443123	\$238.04	AW443124	\$238.04
w/ Super Duty Belt		0-3000' Elev	AW443129	\$380.89	AW443134	\$380.89	AW443135	\$380.89
for Jet Kit, CDI Box & Dual Exh.		0-3000' Elev	AW443140	\$238.04	AW443141	\$238.04	AW443142	\$238.04
for Jet Kit, CDI Box & Dual Exh. w/ Super Duty Belt		0-3000' Elev	AW443147	\$380.89	AW443148	\$380.89	AW443149	\$380.89
<b>Polaris</b>								
500 Ranger 2x4 / 4x4 / 6x6	2004-05	0-3000' Elev	-	-	WE436107	\$238.04	WE436109	\$238.04
w/ Severe Duty Belt		0-3000' Elev	-	-	WE436108	\$380.89	WE436110	\$380.89
500 Ranger EFI 4x4	2008	0-3000' Elev	-	-	WE436298	\$238.04	WE436299	\$238.04
w/ Severe Duty Belt		0-3000' Elev	-	-	WE436308	\$380.89	WE436309	\$380.89
500 Ranger EFI / Carb 4x4	2006	0-3000' Elev	-	-	WE436117	\$238.04	WE436119	\$238.04
w/ Severe Duty Belt		0-3000' Elev	-	-	WE436118	\$380.89	WE436120	\$368.99
500 Sportsman EFI 4x4 (EBS)	2008-09	0-3000' Elev	WE436266	\$261.85	WE436276	\$238.04	WE436277	\$261.85
w/ Severe Duty Belt		0-3000' Elev	WE436267	\$404.70	WE436278	\$380.89	WE436279	\$404.70
500 Sportsman EFI 4x4 (Std EBS not for models with Deluxe EBS)	2007	0-3000' Elev	WE425023	\$238.04	WE436078	\$238.04	WE436079	\$238.04
w/ Super Duty Belt		0-3000' Elev	WE405048	\$333.27	WE436084	\$333.27	WE436085	\$333.27
500 Sportsman EFI 4x4 (EBS)	2006	0-3000' Elev	WE425023	\$238.04	WE490718	\$238.04	WE490720	\$238.04
w/ Super Duty Belt		0-3000' Elev	WE405048	\$333.27	WE490719	\$333.27	WE490721	\$333.27
500 Sportsman HO 4x4 (EBS)	2001-05	0-3000' Elev	-	-	WE436131	\$238.04	WE436133	\$238.04
w/ Super Duty Belt		0-3000' Elev	-	-	WE436132	\$333.27	WE436134	\$333.27
500 Sportsman HO Carb 4x4	06/08-09	0-3000' Elev	WE425015	\$238.04	WE415003	\$226.13	WE415011	\$238.04
w/ Severe Duty Belt		0-3000' Elev	WE423505	\$380.89	WE415004	\$380.89	WE415012	\$380.89
600 Sportsman 4x4 (EBS)	2003-05	0-3000' Elev	-	-	WE436145	\$238.04	WE436147	\$238.04
w/ Super Duty Belt		0-3000' Elev	-	-	WE436146	\$333.27	WE436148	\$333.27
700 Ranger Crew 4x4	2008	0-3000' Elev	WE436488	\$333.27	WE436489	\$238.04	WE436490	\$333.27
700 Ranger XP 4x4	2008-09	0-3000' Elev	WE436657	\$166.61	WE436662	\$166.61	WE436663	\$166.61
w/ Severe Duty Belt		0-3000' Elev	WE436284	\$309.46	WE436289	\$309.46	WE436290	\$309.46
700 Ranger XP 4x4	2007	0-3000' Elev	WE436593	\$166.61	WE436598	\$166.61	WE436599	\$166.61
700 Ranger XP 4x4	2005-06	0-3000' Elev	WE423704	\$166.61	WE406001	\$166.61	WE406004	\$166.61
w/ Severe Duty Belt		0-3000' Elev	WE423709	\$309.46	WE406003	\$309.46	WE406006	\$309.46



## Mudder Clutch Kits

- Designed for those who have 28-29.5" tires and play in sticky clay/gumbo mud.
- This kit is not recommended for trail riding.
- You will see a top speed reduction.

## Sand Dune Clutch Kits

- Designed for those who spend most of their time in sand dunes to give the best overall performance.

Model	Year	Elevation	Mudder Clutch Kits		Sand Dune Clutch Kits			
			28-29.5" Tire	Price (F)	Stock Tire	Price (F)	27-28" Paddle	Price (F)
			Part #	Price (F)	Part #	Price (F)	Part #	Price (F)
700 Sportsman 4x4	2005-06	0-3000' Elev	WE423700	\$261.85	WE436159	\$261.85	WE436161	\$261.85
700 Sportsman 4x4 (EBS)	2002-04	0-3000' Elev	WE423702	\$238.04	WE436173	\$238.04	WE436175	\$238.04
w/ Super Duty Belt		0-3000' Elev	WE405051	\$333.27	WE436174	\$345.18	WE436176	\$333.27
700 Sportsman EFI 4x4	2007	0-3000' Elev	WE423701	\$130.89	WE415021	\$130.89	WE415026	\$118.99
w/ Severe Duty Belt		0-3000' Elev	WE436073	\$273.75	WE436069	\$273.75	WE436070	\$261.85
700 Sportsman EFI 4x4	2004-06	0-3000' Elev	WE423700	\$261.85	WE436159	\$261.85	WE436161	\$261.85
800 RZR 4x4	2009	0-3000' Elev	WE436560	\$190.42	WE436668	\$190.42	WE436669	\$190.42
w/ Severe Duty Belt			WE415089	\$333.27	WE436674	\$333.27	WE436675	\$333.27
for Single Exhaust, Fuel Controller, & Air Filter		0-3000' Elev	WE436567	\$190.42	WE436680	\$190.42	WE436681	\$190.42
for Single Exhaust, Fuel Controller, & Air Filter w/ Severe Duty Belt		0-3000' Elev	WE436339	\$333.27	WE436686	\$333.27	WE436687	\$333.27
for Dual Exhaust, Fuel Controller, & Air Filter		0-3000' Elev	WE436574	\$190.42	WE436692	\$190.42	WE436693	\$190.42
for Dual Exhaust, Fuel Controller, & Air Filter		0-3000' Elev	WE436346	\$333.27	WE436698	\$333.27	WE436699	\$333.27
800 RZR 4x4	2008	0-3000' Elev	WE436560	\$190.42	WE436561	\$190.42	WE436562	\$190.42
w/ Severe Duty Belt			WE415089	\$333.27	WE415085	\$333.27	WE415088	\$333.27
for Single Exhaust, Fuel Controller, & Air Filter		0-3000' Elev	WE436567	\$190.42	WE436568	\$190.42	WE436569	\$190.42
for Single Exhaust, Fuel Controller, & Air Filter w/ Severe Duty Belt		0-3000' Elev	WE436339	\$333.27	WE436340	\$333.27	WE436341	\$358.91
for Dual Exhaust, Fuel Controller, & Air Filter		0-3000' Elev	WE436574	\$190.42	WE436575	\$190.42	WE436576	\$190.42
for Dual Exhaust, Fuel Controller, & Air Filter w/ Severe Duty Belt		0-3000' Elev	WE436346	\$333.27	WE436347	\$333.27	WE436348	\$238.04
800 RZR S 4x4	2009	0-3000' Elev	WE436704	\$190.42	WE436705	\$285.65	WE436706	\$190.42
w/ Severe Duty Belt		0-3000' Elev	WE436711	\$333.27	WE436712	\$428.51	WE436713	\$333.27
800 Sportsman EFI 4x4	2005-06	0-3000' Elev	WE423800	\$261.85	WE415008	\$297.56	WE415016	\$297.56
w/ Severe Duty Belt		0-3000' Elev	WE423805	\$404.70	WE415014	\$440.42	WE415017	\$440.42
800 Sportsman EFI HO 4x4 (EBS)	2008	0-3000' Elev	WE436322	\$261.85	-	-	-	-
w/ Severe Duty Belt		0-3000' Elev	WE436331	\$404.70	-	-	-	-
800 Sportsman EFI Deluxe 4x4	2007	0-3000' Elev	WE436402	\$166.61	WE436403	\$166.61	WE436404	\$166.61
800 Sportsman EFI Deluxe 4x4 (EBS)	2007	0-3000' Elev	WE436187	\$261.85	WE436196	\$261.85	WE436197	\$261.85
800 Sportsman EFI Standard 4x4	2007	0-3000' Elev	WE436187	\$261.85	WE436196	\$261.85	WE436197	\$261.85
800 Sportsman EFI X2 4x4	2007	0-3000' Elev	WE423801	\$261.85	WE415040	\$261.85	WE415041	\$261.85

### Suzuki

450 King Quad 4x4	2007-09	0-3000' Elev	-	-	WE493001	\$226.13	WE436245	\$226.13
700 King Quad 4x4	2007	0-3000' Elev	WE436627	\$226.13	WE495027	\$226.13	WE495028	\$226.13
700 King Quad 4x4	2005-06	0-3000' Elev	WE436629	\$226.13	WE493007	\$226.13	WE493006	\$226.13
750 King Quad AXi 4x4	2008	0-3000' Elev	WE436353	\$226.13	WE436358	\$226.13	WE436359	\$226.13

### Yamaha

550 Grizzly FI 4x4	2009	0-3000' Elev	WE436635	\$226.13	WE436640	\$226.13	WE436641	\$226.13
w/ Severe Duty Belt		0-3000' Elev	WE436646	\$368.99	WE436651	\$368.99	WE436652	\$368.99
660 Grizzly 4x4	2002-08	0-3000' Elev	WE394660	\$226.13	WE391065	\$226.13	WE391068	\$238.04
w/ Severe Duty Belt		0-3000' Elev	WE394662	\$368.99	WE391067	\$368.99	WE391069	\$368.99
660 Rhino 4x4	2004-07	0-3000' Elev	WE394660	\$226.13	WE391061	\$226.13	WE391090	\$226.13
w/ Severe Duty Belt		0-3000' Elev	WE394662	\$368.99	WE391063	\$368.99	WE391091	\$368.99
700 Grizzly 4x4	2007-09	0-3000' Elev	WE394670	\$238.04	WE391058	\$238.04	WE391056	\$238.04
w/ Severe Duty Belt		0-3000' Elev	WE394671	\$380.89	WE391059	\$380.89	WE391057	\$380.89
700 Rhino FI 4x4	2009	0-3000' Elev	WE436605	\$238.04	WE436610	\$238.04	WE436611	\$238.04
w/ Severe Duty Belt		0-3000' Elev	WE436616	\$380.89	WE436621	\$368.99	WE436622	\$368.99
700 Rhino FI 4x4	2008	0-3000' Elev	WE436375	\$226.13	WE436380	\$226.13	WE436381	\$226.13
w/ Severe Duty Belt		0-3000' Elev	WE436387	\$368.99	WE436392	\$368.99	WE436393	\$368.99
for Air Box, EFI Controller & Dual Exhaust		0-3000' Elev	WE436456	\$226.13	WE436457	\$226.13	WE436458	\$226.13
for Air Box, EFI Controller & Dual Exhaust w/ Severe Duty Belt		0-3000' Elev	WE436463	\$368.99	WE436464	\$368.99	WE436465	\$368.99
for Air Box, EFI Controller, Dual Exhaust & Machined Sheave		0-3000' Elev			WE436470	\$226.13	WE436471	\$226.13
for Air Box, EFI Controller, Dual Exhaust & Machined Sheave w/ Severe Duty Belt		0-3000' Elev			WE436476	\$368.99	WE436477	\$368.99



**ATV Sport Utility Clutch Kits**

- Designed for those who spend most of their time on the trails to give the best overall performance.

**ATV Utility Clutch Kits**

- Designed to improve your ATV/UTV's heavy working capacity for those who spend most of their time working or hauling.
- Kit may affect top end speed.

Model	Year	Elevation	Sport Utility Clutch Kits				Utility Clutch Kits			
			Stock Tire		27-28" Tire		Stock Tire		27-28" Tire	
			Part #	Price (F)	Part #	Price (F)	Part #	Price (F)	Part #	Price (F)
<b>Arctic Cat</b>										
250 DVX 2x4	2006-07	0-3000' Elev	WE490401	\$154.70	-	-	-	-	-	-
		3-6000' Elev	WE490402	\$154.70	-	-	-	-	-	-
500 I TRX / TBX 4x4	2004-05	0-3000' Elev	WE490525	\$238.04	-	-	-	-	-	-
500 Auto 4x4	2006-09	0-3000' Elev	WE490501	\$238.04	WE490502	\$238.04	WE490505	\$238.04	WE490506	\$238.04
		3-6000' Elev	WE490503	\$238.04	WE490504	\$238.04	WE490507	\$238.04	WE490508	\$238.04
500 I Auto 4x4	2001-05	0-3000' Elev	WE490500	\$238.04	WE490510	\$238.04	-	-	-	-
		3-6000' Elev	WE491000	\$238.04	WE491010	\$238.04	-	-	-	-
550 H1 4x4	2009	0-3000' Elev	WE436725	\$238.04	WE436727	\$238.04	WE436730	\$238.04	WE436732	\$238.04
		3-6000' Elev	WE436726	\$238.04	WE436728	\$238.04	WE436731	\$238.04	WE436733	\$238.04
w/ Severe Duty Belt		0-3000' Elev	WE436736	\$368.99	WE436738	\$368.99	WE436741	\$368.99	WE436743	\$368.99
		3-6000' Elev	WE436737	\$368.99	WE436739	\$368.99	WE436742	\$368.99	WE436744	\$368.99
650 H1 4x4	2006-07	0-3000' Elev	WE490656	\$238.04	WE491011	\$238.04	WE490659	\$238.04	WE490662	\$238.04
		3-6000' Elev	WE490657	\$238.04	WE490658	\$238.04	WE490661	\$238.04	WE490663	\$238.04
w/ Severe Duty Belt		0-3000' Elev	WE490672	\$380.89	WE490674	\$380.89	WE490678	\$380.89	WE490681	\$380.89
		3-6000' Elev	WE490673	\$380.89	WE490676	\$380.89	WE490679	\$380.89	WE490682	\$380.89
650 H1 Prowler 4x4	2006-09	0-3000' Elev	WE490302	\$238.04	WE490303	\$238.04	WE490304	\$238.04	WE490305	\$238.04
		3-6000' Elev	WE490301	\$238.04	WE490300	\$238.04	WE490306	\$238.04	WE490307	\$238.04
w/ Severe Duty Belt		0-3000' Elev	WE490683	\$380.89	WE490686	\$380.89	WE490689	\$380.89	WE490692	\$380.89
		3-6000' Elev	WE490684	\$380.89	WE490687	\$380.89	WE490691	\$380.89	WE490693	\$380.89
650 V2 4x4	2004-06	0-3000' Elev	WE490650	\$238.04	WE490675	\$238.04	WE436086	\$238.04	WE436090	\$238.04
		3-6000' Elev	WE491035	\$238.04	WE491025	\$238.04	WE436088	\$238.04	WE436092	\$238.04
w/ Severe Duty Belt		0-3000' Elev	WE436198	\$380.89	WE436200	\$380.89	WE436210	\$380.89	WE436204	\$380.89
		3-6000' Elev	WE436199	\$380.89	WE436201	\$380.89	WE436203	\$380.89	WE436205	\$380.89
for Ignition Module		0-3000' Elev	WE490680	\$238.04	WE490685	\$238.04	-	-	-	-
Ig Module w/ Severe Belt		0-3000' Elev	WE436208	\$380.89	WE436209	\$380.89	-	-	-	-
700 EFI Auto 4x4	2007-08	0-3000' Elev	WE490651	\$238.04	WE490652	\$238.04	WE490668	\$238.04	WE490670	\$238.04
		3-6000' Elev	WE490653	\$238.04	WE490654	\$238.04	WE490669	\$238.04	WE490671	\$238.04
700 H1 EFI 4x4	2008-09	0-3000' Elev	WE436406	\$238.04	WE436408	\$238.04	WE436411	\$238.04	WE436413	\$238.04
		3-6000' Elev	WE436407	\$238.04	WE436409	\$238.04	WE436412	\$238.04	WE436414	\$238.04
w/ Severe Duty Belt		0-3000' Elev	WE436418	\$380.89	WE436420	\$380.89	WE436423	\$380.89	WE436425	\$380.89
		3-6000' Elev	WE436419	\$380.89	WE436421	\$380.89	WE436424	\$380.89	WE436426	\$380.89
700 H1 Prowler 4x4	2008	0-3000' Elev	WE436429	\$238.04	WE436431	\$238.04	WE436434	\$238.04	WE436436	\$238.04
		3-6000' Elev	WE436430	\$238.04	WE436432	\$238.04	WE436435	\$238.04	WE436437	\$238.04
w/ Severe Duty Belt		0-3000' Elev	WE436441	\$380.89	WE436443	\$380.89	WE436446	\$380.89	WE436448	\$380.89
		3-6000' Elev	WE436442	\$380.89	WE436444	\$380.89	WE436447	\$380.89	WE436449	\$380.89
700 EFI Auto 4x4	2007-08	0-3000' Elev	WE436577	\$238.04	WE436579	\$238.04	WE436582	\$238.04	WE436584	\$238.04
		3-6000' Elev	WE436578	\$238.04	WE436580	\$238.04	WE436583	\$238.04	WE436585	\$238.04
<b>Can-Am</b>										
400 Outlander EFI 4x4	2009	0-3000' Elev	WE436511	\$238.04	WE436513	\$238.04	WE436515	\$238.04	WE436517	\$238.04
		3-6000' Elev	WE436512	\$238.04	-	-	WE436516	\$238.04	-	-
400 Outlander 4x4	2003-08	0-3000' Elev	WE436511	\$238.04	WE436513	\$238.04	WE436515	\$238.04	WE436517	\$238.04
		3-6000' Elev	WE436512	\$238.04	-	-	WE436516	\$238.04	-	-
500 Outlander EFI 4x4	2009	0-3000' Elev	WE436521	\$238.04	WE436536	\$238.04	WE436539	\$238.04	WE436541	\$238.04
		3-6000' Elev	WE436535	\$238.04	WE436537	\$238.04	WE436540	\$238.04	WE436542	\$238.04
500 Outlander 4x4	2007-08	0-3000' Elev	WE436521	\$238.04	WE436536	\$238.04	WE436539	\$238.04	WE436541	\$238.04
		3-6000' Elev	WE436535	\$238.04	WE436537	\$238.04	WE436540	\$238.04	WE436542	\$238.04
500 Renegade EFI 4x4	2009	0-3000' Elev	WE436493	\$238.04	WE436495	\$238.04	-	-	-	-
		3-6000' Elev	WE436494	\$238.04	WE436496	\$238.04	-	-	-	-
500 Renegade 4x4	2008	0-3000' Elev	WE436493	\$238.04	WE436495	\$238.04	-	-	-	-
		3-6000' Elev	WE436494	\$238.04	WE436496	\$238.04	-	-	-	-
650 Outlander HO EFI 4x4	2007-09	0-3000' Elev	WE436500	\$285.65	WE436502	\$285.65	WE436505	\$285.65	WE436507	\$285.65
		3-6000' Elev	WE436501	\$285.65	WE436503	\$285.65	WE436506	\$285.65	WE436508	\$285.65
800 Outlander R EFI 4x4	2009	0-3000' Elev	WE436522	\$285.65	WE436524	\$285.65	WE436527	\$285.65	WE436529	\$285.65
		3-6000' Elev	WE436523	\$285.65	WE436525	\$285.65	WE436528	\$285.65	WE436530	\$285.65
800 Outlander HO EFI 4x4	2006-08	0-3000' Elev	WE436522	\$285.65	WE436524	\$285.65	WE436527	\$285.65	WE436529	\$285.65
		3-6000' Elev	WE436523	\$285.65	WE436525	\$285.65	WE436528	\$285.65	WE436530	\$285.65
800 Renegade 4x4	2007-08	0-3000' Elev	WE436545	\$285.65	WE436547	\$285.65	-	-	-	-
		3-6000' Elev	WE436546	\$285.65	WE436548	\$285.65	-	-	-	-



## ATV Sport Utility Clutch Kits

- Designed for those who spend most of their time on the trails to give the best overall performance.

## ATV Utility Clutch Kits

- Designed to improve your ATV/UTV's heavy working capacity for those who spend most of their time working or hauling.
- Kit may affect top end speed.

Model	Year	Elevation	Sport Utility Clutch Kits				Utility Clutch Kits			
			Stock Tire		27-28" Tire		Stock Tire		27-28" Tire	
			Part #	Price (F)	Part #	Price (F)	Part #	Price (F)	Part #	Price (F)
<b>Kawasaki</b>										
300 Prairie 2x4	1999-02	0-3000' Elev	AW418000	\$226.13	-	-	-	-	-	-
300 Prairie 4x4	1999-02	0-3000' Elev	AW418010	\$226.13	-	-	-	-	-	-
400 Prairie 2x4	1999-02	0-3000' Elev	AW418020	\$226.13	-	-	-	-	-	-
400 Prairie 4x4	1999-02	0-3000' Elev	AW418030	\$226.13	-	-	-	-	-	-
650 Brute Force 4x4	2006-09	0-3000' Elev	AW441652	\$238.04	AW441654	\$244.95	AW443019	\$238.04	AW441666	\$238.04
		3-6000' Elev	AW442162	\$238.04	AW442167	\$238.04	AW443020	\$238.04	AW441668	\$238.04
w/ Severe Duty Belt		0-3000' Elev	AW443046	\$380.89	AW443048	\$380.89	AW443051	\$380.89	AW443053	\$380.89
		3-6000' Elev	AW443047	\$380.89	AW443049	\$380.89	AW443052	\$380.89	AW443054	\$380.89
for Ignition Module		0-3000' Elev	AW441525	\$238.04	AW441519	\$238.04	-	-	-	-
Ignition Module w/ Severe Belt		0-3000' Elev	AW443059	\$380.89	AW443060	\$380.89	-	-	-	-
650 Brute Force 4x4	2005	0-3000' Elev	AW441650	\$238.04	AW441655	\$238.04	-	-	-	-
		3-6000' Elev	AW442160	\$238.04	AW442165	\$238.04	-	-	-	-
w/ Severe Duty Belt		0-3000' Elev	AW443022	\$380.89	AW443025	\$380.89	-	-	-	-
		3-6000' Elev	AW443023	\$380.89	AW443026	\$380.89	-	-	-	-
for Ignition Module		0-3000' Elev	AW441517	\$238.04	AW441523	\$238.04	-	-	-	-
Ignition Module w/ Severe Belt		0-3000' Elev	AW443024	\$380.89	AW443027	\$380.89	-	-	-	-
650 Prairie 4x4	2002-03	0-3000' Elev	AW441020	\$238.04	AW441030	\$238.04	-	-	-	-
		3-6000' Elev	AW442010	\$238.04	AW442035	\$238.04	-	-	-	-
w/ Severe Duty Belt		0-3000' Elev	AW443031	\$380.89	AW443033	\$380.89	-	-	-	-
		3-6000' Elev	AW443032	\$380.89	AW443034	\$380.89	-	-	-	-
for Ignition Module		0-3000' Elev	AW441323	\$238.04	AW441337	\$238.04	-	-	-	-
Ignition Module w/ Severe Belt		0-3000' Elev	AW443038	\$380.89	AW443039	\$380.89	-	-	-	-
700 KFX 2x4	2003-06	0-3000' Elev	AW441050	\$238.04	-	-	-	-	-	-
w/ Severe Belt		0-3000' Elev	AW443040	\$380.89	-	-	-	-	-	-
for Pipes		0-3000' Elev	AW442155	\$238.04	-	-	-	-	-	-
Pipes w/ Severe Belt		0-3000' Elev	AW443045	\$380.89	-	-	-	-	-	-
700 Prairie 4x4	2004-06	0-3000' Elev	AW441155	\$238.04	AW441250	\$238.04	AW442180	\$238.04	AW442184	\$238.04
		3-6000' Elev	AW442140	\$238.04	AW442150	\$238.04	AW442182	\$238.04	AW442186	\$238.04
w/ Severe Duty Belt		0-3000' Elev	AW443061	\$380.89	AW443063	\$380.89	AW443066	\$380.89	AW443068	\$380.89
		3-6000' Elev	AW443062	\$380.89	AW443064	\$380.89	AW443067	\$380.89	AW443069	\$380.89
for Ignition Module		0-3000' Elev	AW441422	\$238.04	AW441439	\$238.04	-	-	-	-
Ignition Module w/ Severe Belt		0-3000' Elev	AW443074	\$380.89	AW443075	\$380.89	-	-	-	-
750 Brute Force 4x4	2006-07	0-3000' Elev	AW441725	\$238.04	AW441729	\$238.04	AW443015	\$238.04	AW442188	\$238.04
		3-6000' Elev	AW442172	\$238.04	AW442179	\$238.04	AW443021	\$238.04	AW442190	\$238.04
w/ Severe Duty Belt		0-3000' Elev	AW443076	\$380.89	AW443078	\$380.89	AW443081	\$380.89	AW443083	\$380.89
		3-6000' Elev	AW443077	\$380.89	AW443079	\$380.89	AW443082	\$380.89	AW443084	\$380.89
for Ignition Module		0-3000' Elev	AW441534	\$238.04	AW441538	\$238.04	-	-	-	-
Ignition Module w/ Severe Belt		0-3000' Elev	AW443089	\$380.89	AW443090	\$380.89	-	-	-	-
750 Brute Force 4x4	2005	0-3000' Elev	AW441775	\$238.04	AW441750	\$238.04	-	-	-	-
		3-6000' Elev	AW442170	\$238.04	AW442175	\$238.04	-	-	-	-
w/ Severe Duty Belt		0-3000' Elev	AW443091	\$380.89	AW443093	\$380.89	-	-	-	-
		3-6000' Elev	AW443092	\$380.89	AW443094	\$380.89	-	-	-	-
for Ignition Module		0-3000' Elev	AW441526	\$238.04	AW441529	\$238.04	-	-	-	-
Ignition Module w/ Severe Belt		0-3000' Elev	AW443098	\$380.89	AW443099	\$380.89	-	-	-	-
750 Brute Force EFI 4x4i	2008	0-3000' Elev	AW443100	\$238.04	AW443102	\$238.04	-	-	-	-
		3-6000' Elev	AW443101	\$238.04	AW443103	\$238.04	-	-	-	-
w/ Severe Duty Belt		0-3000' Elev	AW443107	\$380.89	AW443109	\$380.89	-	-	-	-
		3-6000' Elev	AW443108	\$380.89	AW443110	\$380.89	-	-	-	-
750 Teryx 4x4	2008	0-3000' Elev	AW443114	\$238.04	AW443116	\$238.04	AW443119	\$238.04	AW443121	\$238.04
		3-6000' Elev	AW443115	\$238.04	AW443117	\$238.04	AW443120	\$238.04	AW443122	\$238.04
w/ Super Duty Belt		0-3000' Elev	AW443125	\$380.89	AW443127	\$380.89	AW443130	\$380.89	AW443132	\$380.89
		3-6000' Elev	AW443126	\$380.89	AW443128	\$380.89	AW443131	\$380.89	AW443133	\$380.89
for Jet Kit, CDI Box & Dual Exh.		0-3000' Elev	AW443136	\$238.04	AW443138	\$238.04	-	-	-	-
		3-6000' Elev	AW443137	\$238.04	AW443139	\$238.04	-	-	-	-
for Jet Kit, CDI Box & Dual Exh. w/ Super Duty Belt		0-3000' Elev	AW443143	\$380.89	AW443145	\$380.89	-	-	-	-
		3-6000' Elev	AW443144	\$380.89	AW443146	\$380.89	-	-	-	-
3000/3010/3020 Mule All (Not for Diesel models)	2007	0-3000' Elev	-	-	-	-	AW433010	\$226.13	AW433010	\$226.13



**ATV Sport Utility Clutch Kits**

- Designed for those who spend most of their time on the trails to give the best overall performance.

**ATV Utility Clutch Kits**

- Designed to improve your ATV/UTV's heavy working capacity for those who spend most of their time working or hauling.
- Kit may affect top end speed.

Model	Year	Elevation	Sport Utility Clutch Kits				Utility Clutch Kits			
			Stock Tire		27-28" Tire		Stock Tire		27-28" Tire	
			Part #	Price (F)	Part #	Price (F)	Part #	Price (F)	Part #	Price (F)
<b>Polaris</b>										
250 Trail Blazer / Trail Boss 2x4	1988-05	0-3000' Elev	WE412500	\$238.04	-	-	-	-	-	-
250 Xplorer 2x4	2000-02	0-3000' Elev	WE412525	\$226.13	-	-	-	-	-	-
300 Xplorer 2x4 / Xpress 4x4	1996-99	0-3000' Elev	WE413000	\$238.04	-	-	-	-	-	-
325 Magnum 2x4 / 4x4	2000-02	0-3000' Elev	WE414004	\$238.04	-	-	-	-	-	-
325 Trail Boss 2x4	2000-02	0-3000' Elev	WE414005	\$238.04	-	-	-	-	-	-
330 ATP 4x4	2004-05	0-3000' Elev	WE413650	\$238.04	-	-	WE403600	\$238.04	-	-
330 Magnum 2x4 / 4x4	2003-05	0-3000' Elev	WE413330	\$238.04	-	-	-	-	-	-
330 Trail Boss 2x4	2003-05	0-3000' Elev	WE413335	\$238.04	-	-	-	-	-	-
w/ Severe Duty Belt		0-3000' Elev	WE415103	\$380.89	-	-	-	-	-	-
335 Sportsman 4x4	1999-00	0-3000' Elev	WE413350	\$238.04	WE433350	\$238.04	WE403350	\$238.04	-	-
400 Big Boss 6x6	1994-98	0-3000' Elev	-	-	-	-	WE404006	\$238.04	-	-
400 Scrambler 2x4	2001-02	0-3000' Elev	WE414006	\$238.04	-	-	-	-	-	-
400 Scrambler 2x4	1994-00	0-3000' Elev	WE414000	\$238.04	WE434003	\$238.04	-	-	-	-
400 Scrambler 4x4	1995-02	0-3000' Elev	WE414001	\$238.04	WE434004	\$238.04	-	-	-	-
400 Sport 2x4	1994-99	0-3000' Elev	WE414000	\$238.04	WE434003	\$238.04	-	-	-	-
400 Sportsman 4x4	2001-05	0-3000' Elev	WE414008	\$238.04	WE434002	\$238.04	WE404008	\$238.04	-	-
400 Sportsman 4x4	1993-97	0-3000' Elev	WE414002	\$238.04	WE434001	\$238.04	WE404000	\$238.04	-	-
400 Trail Blazer 2x4	2003	0-3000' Elev	WE414006	\$238.04	-	-	-	-	-	-
w/ Severe Duty Belt		0-3000' Elev	WE415107	\$380.89	-	-	-	-	-	-
400 Xplorer 4x4	1993-02	0-3000' Elev	WE414002	\$238.04	WE434001	\$238.04	WE404000	\$238.04	-	-
400 Xpress 2x4	1995-97	0-3000' Elev	WE414002	\$238.04	WE434001	\$238.04	-	-	-	-
425 Magnum 2x4 / 4x4	1995-98	0-3000' Elev	WE414250	\$238.04	-	-	WE404250	\$238.04	-	-
425 Magnum 6x6	1996-98	0-3000' Elev	-	-	-	-	WE404256	\$238.04	-	-
450 Sportsman 4x4	2006	0-3000' Elev	WE414017	\$238.04	WE434018	\$238.04	WE404013	\$238.04	-	-
w/ Severe Duty Belt		0-3000' Elev	WE415109	\$380.89	WE435012	\$380.89	WE405047	\$380.89	-	-
500 ATP 4x4	2004-05	0-3000' Elev	WE410500	\$238.04	WE430500	\$238.04	WE400500	\$238.04	-	-
500 Big Boss 6x6	1998-99	0-3000' Elev	WE415001	\$238.04	-	-	WE405001	\$238.04	-	-
w/ Severe Duty Belt		0-3000' Elev	WE415015	\$380.89	-	-	WE405012	\$380.89	-	-
500 Magnum 4x4 (non-EBS)	1999-02	0-3000' Elev	WE415025	\$238.04	WE435004	\$238.04	WE405003	\$238.04	-	-
500 Magnum 4x4 (EBS)	1999-02	0-3000' Elev	WE475002B	\$238.04	WE425009	\$238.04	WE405025B	\$238.04	-	-
500 Ranger 2x4/4x4/6x6	2004-05	0-3000' Elev	WE417020	\$238.04	WE436025	\$238.04	WE406055	\$238.04	WE436105	\$238.04
		3-6000' Elev	WE436099	\$238.04	WE436101	\$238.04	WE436103	\$238.04	-	-
w/ Severe Duty Belt		0-3000' Elev	WE415027	\$380.89	WE435034	\$380.89	WE436338	\$380.89	WE436106	\$380.89
		3-6000' Elev	WE436100	\$380.89	WE436102	\$380.89	WE436104	\$380.89	-	-
500 Ranger EFI 4x4	2008	0-3000' Elev	WE436256	\$238.04	WE436292	\$238.04	WE436294	\$238.04	WE436296	\$238.04
		3-6000' Elev	WE436291	\$238.04	WE436293	\$238.04	WE436295	\$238.04	WE436297	\$238.04
w/ Severe Duty Belt		0-3000' Elev	WE436300	\$380.89	WE436302	\$380.89	WE436304	\$380.89	WE436306	\$380.89
		3-6000' Elev	WE436301	\$380.89	WE436303	\$380.89	WE436305	\$380.89	WE436307	\$380.89
500 Ranger EFI / Carb 4x4	2006	0-3000' Elev	WE410505	\$238.04	WE435042	\$238.04	WE435046	\$238.04	WE436113	\$238.04
		3-6000' Elev	WE410535	\$238.04	WE435040	\$238.04	WE436111	\$238.04	WE436115	\$238.04
w/ Severe Duty Belt		0-3000' Elev	WE415022	\$380.89	WE435048	\$380.89	WE435041	\$380.89	WE436114	\$380.89
		3-6000' Elev	WE410522	\$380.89	WE435044	\$380.89	WE436112	\$380.89	WE436116	\$380.89
for Tracks		0-3000' Elev	-	-	WE417021	\$238.04	-	-	-	-
for Tracks w/ Severe Duty Belt		0-3000' Elev	-	-	-	-	-	-	-	-
500 Scrambler 2x4	2001-02	0-3000' Elev	WE415007	\$226.13	WE435003	\$226.13	-	-	-	-
w/ Severe Duty Belt		0-3000' Elev	WE415112	\$380.89	WE435019	\$380.89	-	-	-	-
500 Scrambler 4x4	1999-08	0-3000' Elev	WE415007	\$226.13	WE435003	\$226.13	-	-	-	-
w/ Severe Duty Belt		0-3000' Elev	WE415112	\$380.89	WE435019	\$380.89	-	-	-	-
500 Scrambler 4x4	1998	0-3000' Elev	WE415002	\$238.04	-	-	-	-	-	-
500 Scrambler 4x4	1997	0-3000' Elev	WE415000	\$238.04	-	-	-	-	-	-
500 Sportsman 4x4 (EBS)	1998-00	0-3000' Elev	WE475001B	\$238.04	WE425005	\$238.04	WE485050B	\$238.04	-	-
w/ Super Duty Belt		0-3000' Elev	-	-	-	-	WE405038	\$333.27	-	-
500 Sportsman 4x4	1996-98	0-3000' Elev	WE415001	\$238.04	WE435001	\$238.04	WE405001	\$238.04	-	-
w/ Severe Duty Belt		0-3000' Elev	WE415015	\$380.89	WE435017	\$380.89	WE405012	\$380.89	-	-
500 Sportsman 6x6	2008	0-3000' Elev	-	-	-	-	WE436478	\$309.46	WE436480	\$309.46
w/ Severe Duty Belt		0-3000' Elev	-	-	-	-	WE436479	\$309.46	WE436481	\$309.46



## ATV Sport Utility Clutch Kits

- Designed for those who spend most of their time on the trails to give the best overall performance.

## ATV Utility Clutch Kits

- Designed to improve your ATV/UTV's heavy working capacity for those who spend most of their time working or hauling.
- Kit may affect top end speed.

Model	Year	Elevation	Sport Utility Clutch Kits				Utility Clutch Kits			
			Stock Tire		27-28" Tire		Stock Tire		27-28" Tire	
			Part #	Price (F)	Part #	Price (F)	Part #	Price (F)	Part #	Price (F)
500 Sportsman 6x6 (non EBS)	2000-06	0-3000' Elev	WE415001	\$238.04	-	-	WE405001	\$238.04	-	-
w/ Severe Duty Belt		0-3000' Elev	WE415015	\$380.89	-	-	WE405012	\$380.89	-	-
for Tracks		0-3000' Elev	-	-	-	-	-	WE405007	\$238.04	-
500 Sportsman EFI 4x4 (EBS)	2008-09	0-3000' Elev	WE436258	\$238.04	WE436260	\$249.94	WE436268	\$238.04	WE436270	\$249.94
w/ Severe Duty Belt		3-6000' Elev	WE436259	\$249.94	WE436261	\$238.04	WE436269	\$249.94	WE436271	\$238.04
		0-3000' Elev	WE436262	\$380.89	WE436264	\$392.80	WE436272	\$380.89	WE436274	\$392.80
		3-6000' Elev	WE436263	\$392.80	WE436265	\$380.89	WE436273	\$392.80	WE436275	\$380.89
500 Sportsman EFI 4x4 (Std EBS-not for models w/Deluxe EBS)	2007	0-3000' Elev	WE436074	\$238.04	WE436075	\$238.04	WE436076	\$226.13	WE436077	\$226.13
w/ Super Duty Belt		3-6000' Elev	WE490722	\$226.13	WE490724	\$226.13	WE490726	\$238.04	WE490728	\$238.04
		0-3000' Elev	WE436080	\$333.27	WE436081	\$333.27	WE436082	\$321.37	WE436083	\$321.37
		3-6000' Elev	WE490723	\$333.27	WE490725	\$333.27	WE490727	\$333.27	WE490729	\$333.27
500 Sportsman EFI 4x4 (EBS)	2006	0-3000' Elev	WE410515	\$238.04	WE430503	\$238.04	WE405018	\$226.13	WE490714	\$238.04
w/ Super Duty Belt		3-6000' Elev	WE410520	\$238.04	WE430527	\$238.04	WE406011	\$238.04	WE490716	\$238.04
		0-3000' Elev	WE435061	\$333.27	WE435063	\$333.27	WE405039	\$321.37	WE490715	\$333.27
		3-6000' Elev	WE435062	\$333.27	WE435064	\$333.27	WE405043	\$333.27	WE490717	\$333.27
500 Sportsman EFI X2/ Touring 4x4 (EBS)	2008	0-3000' Elev	WE436310	\$238.04	-	-	-	-	-	-
w/ Severe Duty Belt		3-6000' Elev	WE436311	\$249.94	-	-	-	-	-	-
		0-3000' Elev	WE436312	\$380.89	-	-	-	-	-	-
		3-6000' Elev	WE436313	\$392.80	-	-	-	-	-	-
500 Sportsman DU5E 4x4 (EBS)	2000-01	0-3000' Elev	WE475001B	\$238.04	WE425005	\$238.04	WE485050B	\$238.04	-	-
w/ Super Duty Belt		0-3000' Elev	-	-	-	-	WE405038	\$333.27	-	-
500 Sportsman HO 4x4 (EBS)	2001-05	0-3000' Elev	WE475005B	\$238.04	WE425007	\$226.13	WE485005B	\$226.13	WE436127	\$226.13
w/ Super Duty Belt		3-6000' Elev	WE415050	\$238.04	WE435050	\$238.04	WE436125	\$238.04	WE436129	\$238.04
		0-3000' Elev	WE436121	\$333.27	WE436123	\$333.27	WE405052	\$321.37	WE436128	\$321.37
		3-6000' Elev	WE436122	\$345.18	WE436124	\$345.18	WE436126	\$333.27	WE436130	\$333.27
500 Sportsman HO Carb 4x4	06/08-09	0-3000' Elev	WE415082	\$226.13	WE435013	\$226.13	WE405037	\$226.13	-	-
w/ Severe Duty Belt		3-6000' Elev	WE415034	\$226.13	WE435087	\$226.13	WE406009	\$226.13	-	-
		0-3000' Elev	WE415019	\$368.99	WE435027	\$380.89	WE405040	\$368.99	-	-
		3-6000' Elev	WE415009	\$368.99	WE435022	\$380.89	WE406008	\$368.99	-	-
500 Xplorer 4x4	1997	0-3000' Elev	WE415001	\$238.04	WE435001	\$238.04	WE405001	\$238.04	-	-
w/ Severe Duty Belt		0-3000' Elev	WE415015	\$380.89	WE435017	\$380.89	WE405012	\$380.89	-	-
600 Sportsman 4x4 (EBS)	2003-05	0-3000' Elev	WE416000	\$238.04	WE436000	\$238.04	WE406050	\$238.04	WE436141	\$238.04
w/ Super Duty Belt		3-6000' Elev	WE416010	\$238.04	WE436010	\$238.04	WE436139	\$238.04	WE436143	\$238.04
		0-3000' Elev	WE436135	\$333.27	WE436137	\$333.27	WE405044	\$333.27	WE436142	\$333.27
		3-6000' Elev	WE436136	\$333.27	WE436138	\$333.27	WE436140	\$333.27	WE436144	\$333.27
700 MV7 4x4	2005	0-3000' Elev	-	-	-	-	WE406077	\$261.85	-	-
700 Ranger Crew 4x4	2008	0-3000' Elev	WE436484	\$238.04	WE436486	\$333.27	-	-	-	-
w/ Severe Duty Belt		3-6000' Elev	WE436485	\$333.27	WE436487	\$333.27	-	-	-	-
700 Ranger XP 4x4	2008-09	0-3000' Elev	WE436653	\$166.61	WE436655	\$166.61	WE436658	\$166.61	WE436660	\$166.61
w/ Severe Duty Belt		3-6000' Elev	WE436654	\$166.61	WE436656	\$166.61	WE436659	\$166.61	WE436661	\$166.61
		0-3000' Elev	WE436280	\$309.46	WE436282	\$309.46	WE436285	\$309.46	WE436287	\$309.46
		3-6000' Elev	WE436281	\$309.46	WE436283	\$309.46	WE436286	\$309.46	WE436288	\$309.46
700 Ranger XP 4x4	2007	0-3000' Elev	WE436589	\$166.61	WE436591	\$166.61	WE436594	\$166.61	WE436596	\$166.61
w/ Severe Duty Belt		3-6000' Elev	WE436590	\$166.61	WE436592	\$166.61	WE436595	\$166.61	WE436597	\$166.61
for Tracks w/ Severe Duty Belt		0-3000' Elev	-	-	WE436600	\$166.61	-	-	-	-
700 Ranger XP 4x4	2005-06	0-3000' Elev	WE415033	\$166.61	WE435037	\$166.61	WE405027	\$166.61	WE406015	\$166.61
w/ Severe Duty Belt		3-6000' Elev	WE415013	\$166.61	WE435030	\$166.61	WE406002	\$166.61	WE406016	\$166.61
		0-3000' Elev	WE415037	\$309.46	WE435028	\$309.46	WE405033	\$309.46	WE406017	\$309.46
		3-6000' Elev	WE415023	\$309.46	WE435035	\$309.46	WE406014	\$309.46	WE406018	\$309.46
for Tracks w/ Severe Duty Belt		0-3000' Elev	-	-	WE415038	\$309.46	-	-	-	-
		3-6000' Elev	-	-	WE415024	\$309.46	-	-	-	-
700 Sportsman 4x4	2005-06	0-3000' Elev	WE415049	\$261.85	WE435025	\$261.85	WE405025	\$261.85	WE436155	\$261.85
		3-6000' Elev	WE415079	\$261.85	WE435070	\$261.85	WE406012	\$261.85	WE436157	\$261.85
700 Sportsman 4x4 (EBS)	2002-04	0-3000' Elev	WE415030	\$238.04	WE435010	\$238.04	WE405030	\$238.04	WE436169	\$238.04
w/ Super Duty Belt		3-6000' Elev	WE417000	\$238.04	WE435020	\$238.04	WE436167	\$238.04	WE436171	\$238.04
		0-3000' Elev	WE436163	\$333.27	WE436165	\$380.89	WE405046	\$333.27	WE436170	\$333.27
		3-6000' Elev	WE436164	\$333.27	WE436166	\$380.89	WE436168	\$333.27	WE436172	\$333.27



**ATV Sport Utility Clutch Kits**

- Designed for those who spend most of their time on the trails to give the best overall performance.

**ATV Utility Clutch Kits**

- Designed to improve your ATV/UTV's heavy working capacity for those who spend most of their time working or hauling.
- Kit may affect top end speed.

Model	Year	Elevation	Sport Utility Clutch Kits				Utility Clutch Kits				
			Stock Tire		27-28" Tire		Stock Tire		27-28" Tire		
			Part #	Price (F)	Part #	Price (F)	Part #	Price (F)	Part #	Price (F)	
700 Sportsman EFI 4x4	2007	0-3000' Elev	WE415042	\$130.89	WE435021	\$130.89	WE405026	\$130.89	WE436177	\$130.89	
		3-6000' Elev	WE415043	\$95.18	WE435023	\$130.89	WE405024	\$95.18	WE436179	\$130.89	
		w/ Severe Duty Belt	0-3000' Elev	WE436065	\$273.75	WE436067	\$273.75	WE436071	\$297.56	WE436178	\$273.75
		3-6000' Elev	WE436066	\$238.04	WE436068	\$273.75	WE436072	\$238.04	WE436180	\$273.75	
700 Sportsman EFI 4x4	2004-06	0-3000' Elev	WE415049	\$261.85	WE435025	\$261.85	WE405025	\$261.85	WE436155	\$261.85	
		3-6000' Elev	WE415079	\$261.85	WE435070	\$261.85	WE406012	\$261.85	WE436157	\$261.85	
700 Sportsman EFI X2 4x4 (EBS)	2008	0-3000' Elev	WE436314	\$297.56	-	-	-	-	-	-	
		3-6000' Elev	WE436315	\$297.56	-	-	-	-	-	-	
		w/ Severe Duty Belt	0-3000' Elev	WE436316	\$440.42	-	-	-	-	-	-
		3-6000' Elev	WE436317	\$440.42	-	-	-	-	-		
800 RZR 4x4	2009	0-3000' Elev	WE436664	\$190.42	WE436666	\$190.42	-	-	-	-	
		3-6000' Elev	WE436665	\$190.42	WE436667	\$190.42	-	-	-	-	
		w/ Severe Duty Belt	0-3000' Elev	WE436670	\$333.27	WE436672	\$333.27	-	-	-	
			3-6000' Elev	WE436671	\$333.27	WE436673	\$333.27	-	-	-	
		for Single Exhaust, Fuel Controller, & Air Filter	0-3000' Elev	WE436676	\$190.42	WE436678	\$190.42	-	-	-	
			3-6000' Elev	WE436677	\$190.42	WE436679	\$190.42	-	-	-	
		for Single Exhaust, Fuel Controller, & Air Filter	0-3000' Elev	WE436682	\$333.27	WE436684	\$333.27	-	-	-	
		w/ Severe Duty Belt	3-6000' Elev	WE436683	\$333.27	WE436685	\$333.27	-	-	-	
		for Dual Exhaust, Fuel Controller, & Air Filter	0-3000' Elev	WE436688	\$190.42	WE436690	\$190.42	-	-	-	
			3-6000' Elev	WE436689	\$190.42	WE436691	\$190.42	-	-	-	
		for Dual Exhaust, Fuel Controller, & Air Filter	0-3000' Elev	WE436694	\$333.27	WE436696	\$333.27	-	-	-	
		w/ Severe Duty Belt	3-6000' Elev	WE436695	\$333.27	WE436697	\$333.27	-	-	-	
800 RZR 4x4	2008	0-3000' Elev	WE436556	\$190.42	WE436558	\$190.42	-	-	-	-	
		3-6000' Elev	WE436557	\$190.42	WE436559	\$190.42	-	-	-		
		w/ Severe Duty Belt	0-3000' Elev	WE415083	\$333.27	WE415086	\$333.27	-	-	-	
			3-6000' Elev	WE415084	\$333.27	WE415087	\$333.27	-	-	-	
		for Single Exhaust, Fuel Controller, & Air Filter	0-3000' Elev	WE436563	\$190.42	WE436565	\$190.42	-	-	-	
			3-6000' Elev	WE436564	\$190.42	WE436566	\$190.42	-	-	-	
		for Single Exhaust, Fuel Controller, & Air Filter	0-3000' Elev	WE490710	\$333.27	WE490712	\$333.27	-	-	-	
		w/ Severe Duty Belt	3-6000' Elev	WE490711	\$333.27	WE490713	\$333.27	-	-	-	
		for Dual Exhaust, Fuel Controller, & Air Filter	0-3000' Elev	WE436570	\$190.42	WE436572	\$190.42	-	-	-	
			3-6000' Elev	WE436571	\$190.42	WE436573	\$190.42	-	-	-	
		for Dual Exhaust, Fuel Controller, & Air Filter	0-3000' Elev	WE436342	\$333.27	WE436344	\$333.27	-	-	-	
		w/ Severe Duty Belt	3-6000' Elev	WE436343	\$333.27	WE436345	\$333.27	-	-	-	
800 RZR S 4x4	2009	0-3000' Elev	WE436700	\$285.65	WE436702	\$190.42	-	-	-	-	
		3-6000' Elev	WE436701	\$285.65	WE436703	\$190.42	-	-	-		
		w/ Severe Duty Belt	0-3000' Elev	WE436707	\$428.51	WE436709	\$333.27	-	-	-	
		3-6000' Elev	WE436708	\$428.51	WE436710	\$333.27	-	-	-		
800 Sportsman EFI 4x4	2005-06	0-3000' Elev	WE415060	\$261.85	WE435073	\$269.95	WE405034	\$261.85	WE436181	\$261.85	
		3-6000' Elev	WE415076	\$261.85	WE435082	\$261.85	WE406005	\$261.85	WE436183	\$261.85	
		w/ Severe Duty Belt	0-3000' Elev	WE415010	\$404.70	WE435075	\$404.70	WE406010	\$404.70	WE436182	\$404.70
			3-6000' Elev	WE415020	\$404.70	WE435085	\$404.70	WE406007	\$404.70	WE436184	\$404.70
800 Sportsman EFI 4x4 (EBS)	2008-09	0-3000' Elev	WE436318	\$273.75	WE436320	\$273.75	WE436323	\$273.75	WE436325	\$273.75	
		3-6000' Elev	WE436319	\$261.85	WE436321	\$261.85	WE436324	\$261.85	WE436326	\$261.85	
		w/ Severe Duty Belt	0-3000' Elev	WE436327	\$416.61	WE436329	\$416.61	WE436332	\$416.61	WE436334	\$416.61
		3-6000' Elev	WE436328	\$404.70	WE436330	\$404.70	WE436333	\$404.70	WE436335	\$404.70	
800 Sportsman EFI Deluxe 4x4 (EBS)	2007	0-3000' Elev	WE436188	\$261.85	WE436190	\$261.85	WE436192	\$261.85	WE436194	\$261.85	
		3-6000' Elev	WE436189	\$261.85	WE436191	\$261.85	WE436193	\$261.85	WE436195	\$261.85	
800 Sportsman EFI Standard 4x4	2007	0-3000' Elev	WE436394	\$166.61	WE436396	\$166.61	WE436398	\$166.61	WE436400	\$166.61	
		3-6000' Elev	WE436395	\$166.61	WE436397	\$166.61	WE436399	\$166.61	WE436401	\$166.61	
800 Sportsman EFI Standard 4x4 (w/ EBS)	2007	0-3000' Elev	WE436188	\$261.85	WE436190	\$261.85	WE436192	\$261.85	WE436194	\$261.85	
		3-6000' Elev	WE436189	\$261.85	WE436191	\$261.85	WE436193	\$261.85	WE436195	\$261.85	
800 Sportsman EFI Touring 4x4 (EBS)	2008	0-3000' Elev	WE436336	\$297.56	-	-	-	-	-	-	
		w/ Severe Duty Belt	3-6000' Elev	WE436337	\$297.56	-	-	-	-	-	
800 Sportsman EFI X2 4x4	2007	0-3000' Elev	WE415061	\$261.85	WE415062	\$261.85	WE405031	\$261.85	WE436186	\$261.85	
		3-6000' Elev	WE415063	\$261.85	WE415064	\$178.51	WE405032	\$261.85	WE436185	\$178.51	
Ranger 4x4 / 6x6	99-02	0-3000' Elev	-	-	-	-	WE406000	\$238.04	-	-	



## ATV Sport Utility Clutch Kits

- Designed for those who spend most of their time on the trails to give the best overall performance.

## ATV Utility Clutch Kits

- Designed to improve your ATV/UTV's heavy working capacity for those who spend most of their time working or hauling.
- Kit may affect top end speed.

Model	Year	Elevation	Sport Utility Clutch Kits				Utility Clutch Kits			
			Stock Tire		27-28" Tire		Stock Tire		27-28" Tire	
			Part #	Price (F)	Part #	Price (F)	Part #	Price (F)	Part #	Price (F)
<b>Suzuki</b>										
400 Eiger 2x4 / 4x4	2002-08	0-3000' Elev	-	-	-	-	WE493040	\$95.18	-	-
450 King Quad 4x4	2007-09	0-3000' Elev	WE493003	\$226.13	WE493005	\$226.13	WE436246	\$226.13	WE436248	\$226.13
		3-6000' Elev	WE493004	\$226.13	WE436244	\$226.13	WE436247	\$226.13	WE436249	\$226.13
500 Vinson 4x4	2002-06	0-3000' Elev	WE493000	\$226.13	WE493010	\$226.13	-	-	-	-
		3-6000' Elev	WE494000	\$226.13	WE494010	\$226.13	-	-	-	-
		w/ Severe Duty Belt	0-3000' Elev	WE436240	\$368.99	WE436242	\$368.99	-	-	-
		3-6000' Elev	WE436241	\$368.99	WE436243	\$368.99	-	-	-	-
500 Vinson Manual 4x4	2002-06	Any Elev	-	-	-	-	WE493002	\$59.46	-	-
620 QUV Auto 4x4	2005	0-3000' Elev	-	-	-	-	AW433010	\$226.13	AW433010	\$226.13
700 King Quad 4x4	2007	0-3000' Elev	WE495021	\$226.13	WE495023	\$226.13	WE436627	\$226.13	-	-
		3-6000' Elev	WE495022	\$226.13	WE495024	\$226.13	-	-	-	-
700 King Quad 4x4	2005-06	0-3000' Elev	WE495020	\$226.13	WE495025	\$226.13	WE436629	\$226.13	-	-
		3-6000' Elev	WE495730	\$226.13	WE495735	\$226.13	-	-	-	-
700 Twin Peaks 4x4 Auto	2004-06	0-3000' Elev	WE495000	\$238.04	WE495010	\$238.04	WE436216	\$238.04	WE436220	\$380.89
		3-6000' Elev	WE495700	\$238.04	WE495725	\$238.04	WE436217	\$238.04	WE436221	\$380.89
		w/ Severe Duty Belt	0-3000' Elev	WE436211	\$380.89	WE436213	\$380.89	WE436218	\$380.89	WE436222
		3-6000' Elev	WE436212	\$380.89	WE436214	\$380.89	WE436219	\$380.89	WE436223	\$380.89
750 King Quad AXi 4x4	2008	0-3000' Elev	WE436349	\$226.13	WE436351	\$226.13	WE436354	\$226.13	WE436356	\$226.13
		3-6000' Elev	WE436350	\$226.13	WE436352	\$232.70	WE436355	\$226.13	WE436357	\$226.13
<b>Yamaha</b>										
350 Bruin 2x4 Auto	2004-06	0-3000' Elev	WE391320	\$226.13	WE391335	\$226.13	-	-	-	-
		w/ Super Duty Belt	0-3000' Elev	WE391321	\$321.37	WE391324	\$321.37	-	-	-
350 Bruin 4x4 Auto	2004-06	0-3000' Elev	WE391350	\$226.13	WE391375	\$226.13	-	-	-	-
		3-6000' Elev	WE395060	\$226.13	WE395070	\$226.13	-	-	-	-
		w/ Super Duty Belt	0-3000' Elev	WE391323	\$321.37	WE391325	\$321.37	-	-	-
		3-6000' Elev	WE391322	\$321.37	WE391326	\$321.37	-	-	-	-
350 Grizzly 2x4	2007-08	0-3000' Elev	WE436042	\$226.13	WE436043	\$226.13	-	-	-	-
		w/ Super Duty Belt	0-3000' Elev	WE436044	\$321.37	WE436045	\$321.37	-	-	-
350 Grizzly 4x4	2007	0-3000' Elev	WE436046	\$226.13	WE436048	\$226.13	-	-	-	-
		3-6000' Elev	WE436047	\$226.13	WE436049	\$226.13	-	-	-	-
		w/ Super Duty Belt	0-3000' Elev	WE436050	\$321.37	WE436052	\$321.37	-	-	-
		3-6000' Elev	WE436051	\$321.37	WE436053	\$321.37	-	-	-	-
400 Kodiak 4x4	2000-06	0-3000' Elev	WE391000	\$226.13	WE391005	\$226.13	-	-	-	-
		3-6000' Elev	WE395000	\$226.13	WE395010	\$226.13	-	-	-	-
400 Grizzly 4x4	2007-08	0-3000' Elev	WE391000	\$226.13	WE391005	\$226.13	-	-	-	-
		3-6000' Elev	WE395000	\$226.13	WE395010	\$226.13	-	-	-	-
450 Grizzly 4x4	2008	0-3000' Elev	WE490702	\$226.13	WE490704	\$226.13	WE490706	\$226.13	WE490708	\$226.13
		3-6000' Elev	WE490703	\$226.13	WE490705	\$226.13	WE490707	\$226.13	WE490709	\$226.13
450 Grizzly 4x4	2007	0-3000' Elev	WE391018	\$226.13	WE391019	\$226.13	WE391024	\$226.13	WE391025	\$226.13
		3-6000' Elev	WE391021	\$226.13	WE391022	\$226.13	WE391026	\$226.13	WE391027	\$226.13
450 Kodiak 4x4	2003-06	0-3000' Elev	WE391050	\$226.13	WE391060	\$226.13	WE392450	\$226.13	WE392455	\$226.13
		3-6000' Elev	WE395020	\$226.13	WE395030	\$226.13	WE392623	\$226.13	WE436250	\$226.13
450 Rhino 4x4	2006-07	0-3000' Elev	WE391051	\$226.13	WE391053	\$226.13	WE392600	\$226.13	WE392604	\$226.13
		3-6000' Elev	WE391052	\$226.13	WE391054	\$226.13	WE392602	\$226.13	WE392606	\$226.13
450 Wolverine 4x4	2006-07	0-3000' Elev	WE391017	\$226.13	WE391023	\$226.13	WE436252	\$226.13	WE436254	\$226.13
		3-6000' Elev	WE395023	\$226.13	WE395027	\$226.13	WE436253	\$226.13	WE436255	\$226.13
550 Grizzly FI 4x4	2009	0-3000' Elev	WE436631	\$226.13	WE436633	\$226.13	WE436636	\$226.13	WE436638	\$226.13
		3-6000' Elev	WE436632	\$226.13	WE436634	\$226.13	WE436637	\$226.13	WE436639	\$226.13
		w/ Severe Duty Belt	0-3000' Elev	WE436642	\$368.99	WE436644	\$368.99	WE436647	\$368.99	WE436649
		3-6000' Elev	WE436643	\$368.99	WE436645	\$368.99	WE436648	\$368.99	WE436650	\$368.99
600 Grizzly 4x4	1998-01	0-3000' Elev	WE391010	\$226.13	WE391020	\$226.13	WE392603	\$226.13	WE392607	\$226.13
		3-6000' Elev	WE436251	\$226.13	-	-	WE392624	\$226.13	-	-
w/ Severe Duty Belt	0-3000' Elev	WE391008	\$368.99	WE391004	\$368.99	WE392620	\$368.99	WE392621	\$368.99	
		3-6000' Elev	WE436257	\$368.99	-	-	-	-	-	-



**ATV Sport Utility Clutch Kits**

- Designed for those who spend most of their time on the trails to give the best overall performance.

**ATV Utility Clutch Kits**

- Designed to improve your ATV/UTV's heavy working capacity for those who spend most of their time working or hauling.
- Kit may affect top end speed.

Model	Year	Elevation	Sport Utility Clutch Kits				Utility Clutch Kits				
			Stock Tire		27-28" Tire		Stock Tire		27-28" Tire		
			Part #	Price (F)	Part #	Price (F)	Part #	Price (F)	Part #	Price (F)	
660 Grizzly 4x4	2002-08	0-3000' Elev	WE391030	\$226.13	WE391040	\$226.13	WE392622	\$368.99	WE392619	\$226.13	
		3-6000' Elev	WE395040	\$226.13	WE395050	\$226.13	WE392613	\$226.13	WE392616	\$226.13	
	w/ Severe Duty Belt	0-3000' Elev	WE391012	\$368.99	WE391007	\$368.99	WE392612	\$368.99	WE392615	\$368.99	
		3-6000' Elev	WE395003	\$368.99	WE395007	\$368.99	WE392614	\$368.99	WE392617	\$368.99	
	for Big Bore	0-3000' Elev	WE391070	\$238.04	WE391080	\$238.04	-	-	-	-	
	w/ Adjustable Weights	0-3000' Elev	WE391085	\$242.51	WE391089	\$242.51	-	-	-	-	
	for Big Bore w/ Severe Duty Belt	0-3000' Elev	WE391074	\$380.89	WE391076	\$380.89	-	-	-	-	
	w/ Adjustable Weights	0-3000' Elev	WE391082	\$363.78	WE391088	\$363.78	-	-	-	-	
	660 Rhino 4x4	2004-07	0-3000' Elev	WE391066	\$226.13	WE391055	\$226.13	WE392660	\$226.13	WE392670	\$226.13
			3-6000' Elev	WE395080	\$226.13	WE395090	\$226.13	WE392609	\$226.13	WE392601	\$226.13
w/ Severe Duty Belt		0-3000' Elev	WE391062	\$368.99	WE391064	\$368.99	WE392605	\$368.99	WE392610	\$368.99	
		3-6000' Elev	WE395082	\$368.99	WE395085	\$368.99	WE392611	\$368.99	WE392608	\$368.99	
for Big Bore		0-3000' Elev	WE391072	\$238.04	WE391083	\$238.04	-	-	-	-	
w/ Adjustable Weights		0-3000' Elev	WE391087	\$242.51	WE391086	\$242.51	-	-	-	-	
for Big Bore w/ Severe Belt		0-3000' Elev	WE391078	\$380.89	WE391079	\$380.89	-	-	-	-	
w/ Adjustable Weights		0-3000' Elev	WE391084	\$363.78	WE391081	\$363.78	-	-	-	-	
700 Grizzly 4x4		2007-09	0-3000' Elev	WE391075	\$238.04	WE391077	\$238.04	WE391041	\$238.04	WE391045	\$238.04
			3-6000' Elev	WE395002	\$238.04	WE395004	\$238.04	WE391042	\$238.04	WE391046	\$238.04
	w/ Severe Duty Belt	0-3000' Elev	WE391071	\$380.89	WE391073	\$380.89	WE391043	\$380.89	WE391047	\$380.89	
		3-6000' Elev	WE395072	\$380.89	WE395071	\$380.89	WE391044	\$380.89	WE391048	\$380.89	
	for Big Bore	0-3000' Elev	WE436039	\$238.04	-	-	-	-	-	-	
	w/ Severe Duty Belt	0-3000' Elev	WE436038	\$380.89	-	-	-	-	-	-	
	700 Rhino FI 4x4	2009	0-3000' Elev	WE436601	\$238.04	WE436603	\$238.04	WE436606	\$238.04	WE436608	\$238.04
			3-6000' Elev	WE436602	\$238.04	WE436604	\$238.04	WE436607	\$238.04	WE436609	\$238.04
			0-3000' Elev	WE436612	\$380.89	WE436614	\$380.89	WE436617	\$380.89	WE436619	\$380.89
			3-6000' Elev	WE436613	\$380.89	WE436615	\$380.89	WE436618	\$380.89	WE436620	\$380.89
700 Rhino FI 4x4	2008	0-3000' Elev	WE436371	\$226.13	WE436373	\$226.13	WE436376	\$226.13	WE436378	\$226.13	
		3-6000' Elev	WE436372	\$226.13	WE436374	\$226.13	WE436377	\$226.13	WE436379	\$226.13	
		0-3000' Elev	WE436383	\$368.99	WE436385	\$368.99	WE436388	\$368.99	WE436390	\$368.99	
		3-6000' Elev	WE436384	\$368.99	WE436386	\$368.99	WE436389	\$368.99	WE436391	\$368.99	



## Competition Stall Clutch Kits

- Used in ATV pulls, drag racing, or large tire mud racing.
- Increases low end and mid-range performance.
- Kit works well with stock or oversized tires.

## Economy Clutch Kits

- Will help increase performance

Model	Year	Elevation	Competition Stall Clutch Kits		Economy Clutch Kits	
			Part #	Price (F)	Part #	Price (F)
<b>Arctic Cat</b>						
375 Auto 2x4/4x4	2002	Any Elev	-	-	WE490400	\$118.99
400 Manual 2x4/4x4	2002-05	Any Elev	-	-	WE490425	\$59.46
400 I Auto 2x4/4x4	2003-08	0-3000' Elev	-	-	WE490400	\$118.99
500 Auto 4x4	2006-09	Any Elev	WE490509	\$118.99	-	-
500 I Auto 4x4	2001-05	Any Elev	WE491040	\$118.99	-	-
500 Manual 4x4	1998-06	Any Elev	WE491050	\$118.99	WE490515	\$59.46
550 H1 EFI 4x4	2009	Any Elev	WE436748	-	-	-
650 H1 4x4	2006-07	Any Elev	WE491012	\$118.99	-	-
650 H1 Prowler 4x4	2006-09	Any Elev	WE490309	\$118.99	-	-
700 EFI Auto 4x4	2007-08	Any Elev	WE490655	\$118.99	-	-
700 H1 EFI 4x4	2008-09	Any Elev	WE436417	-	-	-
700 H1 Prowler 4x4	2008	Any Elev	WE436440	-	-	-
Thunder Cat Auto 4x4	2008	0-3000' Elev	WE436588	-	-	-
<b>Can-Am/Bombardier</b>						
400 Outlander 4x4	2003-08	Any Elev	-	-	WE397400	\$59.46
500 Outlander 4x4	2007-08	Any Elev	-	-	WE397415	\$59.46
500 Renegade 4x4	2008	Any Elev	-	-	WE436040	\$59.46
650 Outlander HO EFI 4x4	2007-09	Any Elev	-	-	WE397420	\$59.46
650 Quest 4x4	2003-04	Any Elev	-	-	WE397410	-
800 Outlander HO EFI 4x4	2006-08	Any Elev	-	-	WE397430	\$59.46
800 Renegade 4x4	2007-08	Any Elev	-	-	WE397440	\$59.46
<b>Honda</b>						
TRX 300 2x4 (Except EX Models)	1988-00	Any Elev	WE497210	\$118.99	WE497040	\$59.46
TRX 350 2x4 / 4x4	2000-05	Any Elev	WE497211	\$118.99	WE497010	\$59.46
TRX 350 TE / FE 2x4 / 4x4	2000-05	Any Elev	WE497211	\$118.99	WE497010	\$59.46
TRX 350 TM / FM 2x4 / 4x4	2000-05	Any Elev	WE497211	\$118.99	WE497010	\$59.46
400 AT Rancher 4x4	2004-07	Any Elev	WE497212	\$118.99	WE497030	\$59.46
TRX 400 FM Fourtrax Foreman 4x4	2002	Any Elev	WE497212	\$118.99	WE497000	\$59.46
TRX 400 FW Fourtrax Foreman 4x4	1997-01/03	Any Elev	WE497212	\$118.99	WE497000	\$59.46
TRX 400 Foreman 4x4	1997-03	Any Elev	WE497212	\$118.99	WE497000	\$59.46
420 Rancher 2x4 / 4x4	2007	Any Elev	WE436098	\$118.99	WE497015	\$59.46
TRX 450 FE / FM / S / ES 4x4	1998-04	Any Elev	WE497212	\$118.99	WE497000	\$59.46
TRX 450 Foreman 4x4	1998-04	Any Elev	WE497212	\$118.99	WE497000	\$59.46
TRX 500 Foreman 4x4	2005-08	Any Elev	WE497213	\$118.99	WE497050	\$59.46
TRX 500 Rubicon 4x4	2001-08	Any Elev	WE497213	\$118.99	WE497020	\$59.46
<b>Kawasaki</b>						
360 Prairie 4x4	2002-09	0-3000' Elev	-	-	AW433600	\$95.18
		3-6000' Elev	-	-	AW433601	\$95.18
650 Brute Force 4x4 w/ Severe Duty Belt	2006-09	0-3000' Elev	-	-	AW418039	\$95.18
		3-6000' Elev	-	-	AW439030	\$95.18
		0-3000' Elev	-	-	AW443057	\$238.04
650 Brute Force 4x4 w/ Severe Duty Belt	2005	3-6000' Elev	-	-	AW443058	\$238.04
		0-3000' Elev	-	-	AW418039	\$95.18
		3-6000' Elev	-	-	AW439030	\$95.18
650 Prairie 4x4 w/ Severe Duty Belt	2002-03	0-3000' Elev	-	-	AW443029	\$238.04
		3-6000' Elev	-	-	AW443030	\$238.04
		0-3000' Elev	-	-	AW443030	\$238.04
700 KFX 2x4 w/ Severe Belt	2003-06	3-6000' Elev	-	-	AW436500	\$95.18
		0-3000' Elev	-	-	AW439000	\$95.18
		3-6000' Elev	-	-	AW443036	\$238.04
700 Prairie 4x4 w/ Severe Duty Belt	2004-06	0-3000' Elev	-	-	AW443037	\$238.04
		3-6000' Elev	-	-	AW433700	\$95.18
		0-3000' Elev	-	-	AW439010	\$95.18
700 Prairie 4x4 w/ Severe Duty Belt	2004-06	3-6000' Elev	-	-	AW443043	\$238.04
		0-3000' Elev	-	-	AW443044	\$238.04
		3-6000' Elev	-	-	AW443044	\$238.04
700 Prairie 4x4 w/ Severe Duty Belt	2004-06	0-3000' Elev	-	-	AW433750	\$95.18
		3-6000' Elev	-	-	AW439040	\$95.18
		0-3000' Elev	-	-	AW443072	\$238.04
700 Prairie 4x4 w/ Severe Duty Belt	2004-06	3-6000' Elev	-	-	AW443073	\$238.04
		0-3000' Elev	-	-	AW443073	\$238.04



### Competition Stall Clutch Kits

- Used in ATV pulls, drag racing, or large tire mud racing.
- Increases low end and mid-range performance.
- Kit works well with stock or oversized tires.

### Economy Clutch Kits

- Will help increase performance

Model	Year	Elevation	Competition Stall Clutch Kits		Economy Clutch Kits	
			Part #	Price (F)	Part #	Price (F)
750 Brute Force 4x4	2006-07	0-3000' Elev	-	-	AW433780	\$95.18
		3-6000' Elev	-	-	AW439020	\$95.18
w/ Severe Duty Belt		0-3000' Elev	-	-	AW443087	\$238.04
		3-6000' Elev	-	-	AW443088	\$238.04
750 Brute Force 4x4	2005	0-3000' Elev	-	-	AW433780	\$95.18
		3-6000' Elev	-	-	AW439020	\$95.18
w/ Severe Duty Belt		0-3000' Elev	-	-	AW443096	\$238.04
		3-6000' Elev	-	-	AW443097	\$238.04
3010 Mule Trans 4x4	2007	0-3000' Elev	-	-	AW433015	\$95.18
<b>Suzuki</b>						
400 Eiger 2x4 / 4x4	2002-08	Any Elev	-	-	WE493040	\$95.18
400 King Quad 4x4	2008	Any Elev	-	-	WE493040	\$95.18
450 King Quad 4x4	2007-09	Any Elev	WE494021	\$118.99	-	-
500 Vinson 4x4	2002-06	Any Elev	WE394020	\$118.99	-	-
500 Vinson Manual 4x4	2002-06	Any Elev	WE394020	\$118.99	WE493002	\$59.46
700 King Quad 4x4	2007	Any Elev	WE436041	\$118.99	-	-
700 King Quad 4x4	2005-06	Any Elev	WE394020	\$118.99	-	-
700 Twin Peaks 4x4 Auto	2004-06	0-3000' Elev	-	-	WE493050	\$95.18
w/ Severe Duty Belt		0-3000' Elev	-	-	WE436215	\$238.04
750 King Quad AXi 4x4	2008	Any Elev	-	-	WE436626	-
<b>Yamaha</b>						
250 Bear Tracker 2x4	2004	Any Elev	-	-	WE391002	\$59.46
250 Bear Tracker 2x4	1999-03	Any Elev	-	-	WE391002	\$59.46
250 Bruin 2x4	2005-06	Any Elev	-	-	WE391002	\$59.46
250 Timberwolf 4x4	1992-00	Any Elev	-	-	WE391002	\$59.46
350 Big Bear 2x4 / 4x4	1997-99	Any Elev	WE394011	\$118.99	WE391001	\$59.46
350 Bruin 2x4 / 4x4 Auto	2004-06	Any Elev	WE394012	\$118.99	-	-
350 Grizzly 2x4 / 4x4	2007-08	Any Elev	WE436054	\$118.99	-	-
350 Wolverine 2x4	2006-08	Any Elev	WE436060	\$118.99	WE436061	\$59.46
400 Big Bear 4x4	2007-08	Any Elev	WE436055	\$118.99	WE436056	\$59.46
400 Big Bear 2x4 / 4x4	2000-06	Any Elev	WE394013	\$118.99	WE391001	\$59.46
400 Kodiak 4x4	2000-06	Any Elev	WE394013	\$118.99	-	-
400 Grizzly 4x4	2007-08	Any Elev	WE394013	\$118.99	-	-
450 Grizzly 4x4	2007-08	Any Elev	WE391028	\$118.99	-	-
450 Kodiak 4x4	2003-06	Any Elev	WE394014	\$118.99	-	-
450 Rhino 4x4	2006-07	Any Elev	WE436057	\$118.99	-	-
450 Wolverine 4x4	2006-07	Any Elev	WE436059	\$118.99	-	-
600 Grizzly 4x4	1998-01	Any Elev	WE394010	\$118.99	-	-
660 Grizzly 4x4	2002-08	Any Elev	WE394010	\$118.99	-	-
660 Rhino 4x4	2004-07	Any Elev	WE394010	\$118.99	-	-
700 Grizzly 4x4	2007-09	Any Elev	WE436058	\$118.99	-	-
700 Rhino FI 4x4	2009	Any Elev	WE436623	\$118.99	-	-
700 Rhino FI 4x4	2008	Any Elev	WE436382	\$118.99	-	-

### Performance Upgrade Kits

- Replace friction plates for longer lasting, anti-swelling, smoother modulation.
- Increase holeshot acceleration.
- Any Elevation

Model	Year	Elevation	Performance Upgrade	
			Part #	Price (F)
<b>Honda</b>				
TRX 300 EX Fourtrax / Sportrax 2x4	1993-06	Any Elev	WE497914	\$165.33
TRX 300 Fourtrax (all models) 2x4	1988-00	Any Elev	WE497913	\$121.23
TRX 350 TE / FE 2x4 / 4x4	2000-05	Any Elev	WE497912	\$130.89
TRX 350 TM / FM 2x4 / 4x4	2000-05	Any Elev	WE497910	\$178.51
TRX 400 FM Fourtrax Foreman 4x4	2002	Any Elev	WE497920	\$178.51
TRX 400 FW Fourtrax Foreman 4x4	1997-01/03	Any Elev	WE497920	\$178.51
TRX 450 FE / FM / S / ES 4x4	1998-04	Any Elev	WE497930	\$178.51



## Primary (Drive) Clutch Springs

- Fine tune shift rate, side load pressure and full shift out poundage.
- Designed from the highest quality materials available.
- All EPI springs are manufactured using a 5% tolerance. (Lowest in the Industry)

Color	2½" Load	2¼" Load	1¼" Load	Part #	Price (F)
<b>Arctic Cat 650 V2 2004-06</b>					
<b>Kawasaki 300,400,360,650,700 Prairie; KFX 700/650; 750 Brute Force; Suzuki 700 Twin Peaks</b>					
Purple	54.5 kg	60.0 kg	82.6 kg	DRS17	\$23.75
Yellow	43.1 kg	48.0 kg	65.8 kg	DRS14	\$23.75
White	34.0 kg	42.0 kg	70.37 kg	DRS18	\$23.75
Orange	34.0 kg	40.0 kg	61.2 kg	DRS13	\$23.75
Red	15.9 kg	25.0 kg	56.7 kg	DRS12	\$23.75
Gold	11.3 kg	21.3 kg	63.5 kg	DRS21	\$23.75
Brite Green	10 kg	18 kg	55 kg	DRS19	\$23.75
Almond	8.6 kg	21.3 kg	72.6 kg	DRS23	\$23.75
Maroon	0.5 kg	15.9 kg	77.2 kg	DRS22	\$23.75
Pink	0 kg	11.0 kg	73 kg	DRS20	\$24.95

Color	2½" Load	2¼" Load	1¼" Load	Part #	Price (F)
<b>Polaris</b>					
Purple	120 lbs.	132 lbs.	182 lbs.	PATV4	\$23.75
Yellow	95 lbs.	105 lbs.	145 lbs.	PATV3	\$23.75
White	75 lbs.	91 lbs.	155 lbs.	PATV6	\$23.75
Orange	75 lbs.	87 lbs.	140 lbs.	PATV2	\$23.75
Red	35 lbs.	54 lbs.	140 lbs.	PATV1	\$23.75
Gold	25 lbs.	47 lbs.	140 lbs.	PATV9	\$23.75
Almond	19 lbs.	47 lbs.	160 lbs.	PATV12	\$23.75
Brite Green	17 lbs.	38 lbs.	123 lbs.	PATV7	\$23.75
Maroon	1 lbs.	35 lbs.	170 lbs.	PATV10	\$24.45
Pink	0 lbs.	24 lbs.	160 lbs.	PATV8	\$23.75
Blue	0 lbs.	20 lbs.	115 lbs.	PATV5*	\$23.75

\* Replaces stock Polaris 7041157 Blue/Green spring.

## Secondary (Driven) Clutch Springs

- Fine tune shift rate, sideload pressure and full shift out poundage.
- Designed from the highest quality material available.
- All EPI springs are manufactured using a 5% tolerance. (Lowest in the Industry)
- KSS3 & KSS4 spring provides less belt slippage.
- KSS3 & KSS4 recommended to help maintain peak RPM on models with oversized tires.

Color	3½" Load	2¼" Load	Part #	Price (F)
<b>Arctic Cat 375i, 400i, Suzuki 400 Eiger</b>				
Natural	54.0 kg	69.9 kg	SZ10	\$29.70

<b>Arctic Cat 650 H1 2006-07, 650 Prowler 2006-08, 700H1 EFI 08, 700 H1 Prowler 08</b>				
White	90 kg	117 kg	SZ14	\$35.65
Red	81.5 kg	104.3 kg	SZ12	\$29.70

<b>Arctic Cat 500 Auto, 500i Auto, 500i TRX/TBX, 700 EFI Suzuki 500 Vinson, 700 King Quad, 750 King Quad</b>				
Lime Green	50 kg	76 kg	CATV14	\$29.70
Yellow	44.9 kg	66.3 kg	CATV12	\$29.70

Color	2½" Load	1¼" Load	Part #	Price (F)
<b>Kawasaki 300/400 Prairie All</b>				
White	20.8 kg / 46 lbs	32.2 kg / 71 lbs	KSS1	\$23.75
Green	14.5 kg / 32 lbs	26.8 kg / 59 lbs	KSS2	\$23.75

<b>Arctic Cat 650 V2; Kawasaki 360, 650, 700 Prairie, KFX 700/650, 750 Brute Force, 750 Teryx, Suzuki 700 Twin Peaks</b>				
Black	52.2 kg / 115 lbs	99.9 kg / 220 lbs	KSS3	\$23.75
Red	107.6 kg / 237 lbs	148.0 kg / 326 lbs	KSS4	\$23.75
Blue	105.75 kg	153 kg	KSS12	\$23.75
Lime Green	90 kg	146.25 kg	KSS8	\$23.75
Green	74.84 kg	127.01 kg	KSS9	\$23.75
Almond	63.5 kg	113.0 kg	KSS5	\$23.75
Yellow	123 kg	173 kg	KSS6	\$23.75
Maroon	40.82 kg	74.84 kg	KSS7	\$23.75

**ATTN:** Stock 650 spring = 40.9kg/90lbs + 88.5kg/195lbs.

<b>Polaris 700 Ranger XP 05-08, Ranger EFI 6x6 06-07, 800 RZR 08-09</b>				
White	270 lbs	405 lbs	PEBS18	\$23.75
Gold	252 lbs	382 lbs	PEBS17	\$23.75
Orange	238 lbs	358 lbs	PEBS16	\$23.75
Blue	208 lbs	328 lbs	PEBS15	\$23.75
Red	196 lbs	286 lbs	PEBS19	\$23.75
Purple	150 lbs	260 lbs	PEBS14	\$23.75
Bright Green	120 lbs	225 lbs	PEBS12	\$23.75
White	95 lbs	170 lbs	PEBS13	\$23.75
Pink	94 lbs	169 lbs	PEBS11	\$23.75

<b>All other EBS Clutches (EBS = Engine Braking System)</b>				
Yellow (EBS)	271 lbs.	382 lbs.	PEBS6	\$23.75
Red (EBS)	237 lbs.	339 lbs.	PEBS7	\$23.75
Blue (EBS)	235 lbs.	340 lbs.	PEBS10	\$23.75
Lime Green (EBS)	200 lbs.	325 lbs.	PEBS9	\$23.75
Green (EBS)	165 lbs.	280 lbs.	PEBS8	\$23.75
Almond (EBS)	140 lbs.	250 lbs.	PEBS5	\$23.75
Black HD (EBS)	112 lbs.	215 lbs.	PEBS3	\$23.75
Maroon (EBS)	90 lbs.	165 lbs.	PEBS4	\$23.75
Blue (EBS)	73 lbs.	135 lbs.	PEBS2	\$23.75
Black (EBS)	73 lbs.	120 lbs.	PEBS1	\$23.75

<b>All other non-EBS Clutches (EBS = Engine Braking System)</b>				
Purple	50 lbs.	75 lbs.	PDS-06	\$19.80
Orange	49 lbs.	83 lbs.	PDS-02	\$19.80
Yellow	46 lbs.	71 lbs.	PDS-03	CALL
Silver	44 lbs.	91 lbs.	PDS-04	\$19.80



**Can-Am/Bombardier**

**Primary (Drive) Clutch Spring**

- Largest selection of springs to tune from.
- Fine tune your engagement and top RPM as you like.
- Designed from the highest quality material.
- All EPI springs manufactured using a 5% tolerance which is the lowest in the industry.
- **Fits 400,500,650,800 Outlander; 650 Quest; 500, 800 Renegade.**



Color	2 1/4" Load	1 1/4" Load	Part #	Price (F)
Purple	132 lbs.	182 lbs.	BCS20	\$24.95
Yellow	105 lbs.	145 lbs.	BCS21	\$23.75
White	91 lbs.	155 lbs.	BCS22	\$24.95
Orange	87 lbs.	140 lbs.	BCS23	\$24.95
Red	54 lbs.	140 lbs.	BCS24	\$23.75
Gold	47 lbs.	135 lbs.	BCS25	\$23.75

**Secondary (Drive) Clutch Spring**

Color	2.9" Load	1.9" Load	Part #	Price (F)
Blue	175 lbs.	240 lbs.	SRER13	\$23.75
Red	155 lbs.	215 lbs.	SRER12	\$23.75
Orange	75 lbs.	91 lbs.	SRER10	\$23.75

**Kawasaki**

**Primary (Drive) Clutch Spacer**

- Spacer to move drive clutch closer to belt.
- Fits 700 V Force only.
- Provides a smoother engagement.



Model	Part #	Price (F)
700 V Force	SKI	\$10.46

**Kymco**

**Primary (Sprague) Clutch Springs**

- Tune your engagement
- Sold in sets of 3

1 1/4" Load	Part #	Price (F)
<b>Fits 50/90s</b>		
18 lbs	KY6PK	\$23.75
22 lbs	KY7PK	\$23.75

1.7" Load	Part #	Price (F)
<b>Fits 250 Mongoose, 300 Mongoose, 300 MXU</b>		
18 lbs	KY8PK	\$23.75
27 lbs	KY9PK	\$23.75

**Secondary (Driven) Clutch Springs**

- Improve backshift, designed from the highest quality material.

Color	2 1/2" Load	1 1/4" Load	Part #	Price (F)
<b>Fits 150 MXU</b>				
Blue	64 lbs.	133 lbs.	KY1	\$23.75
Red	85 lbs.	155 lbs.	KY2	\$23.75

Color	2.2" Load	1.1" Load	Part #	Price (F)
<b>Fits 250 Mongoose, 250 MXU, 300 MXU SD</b>				
Blue	155 lbs.	240 lbs.	KDS1	\$23.75
Maroon	160 lbs.	260 lbs.	KDS2	\$23.75
Green	200 lbs.	290 lbs.	KDS3	\$23.75

Color	3" Load	1 3/4" Load	Part #	Price (F)
<b>Fits 250 Mongoose, 250 MXU, 300 MXU SD</b>				
White	215 lbs.	350 lbs.	KDS15	\$23.75
Orange	190 lbs.	310 lbs.	KDS16	\$23.75
Blue	160 lbs.	280 lbs.	KDS17	\$23.75

**Polaris youth models**

Fits all 50/90 Scrambler, Sportsman, & Predator.

**Primary (Sprague) Clutch Springs**

- Tune your engagement
- Sold in sets of 3

1 1/4" Load	Part #	Price (F)
18 lbs	MS7PK	\$23.75
22 lbs	MS8PK	\$23.75



**Secondary (Driven) Clutch Spring**

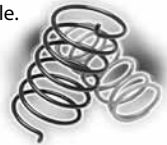
- Improve backshift, designed from the highest quality material.

Color	2 1/2" Load	1 1/4" Load	Part #	Price (F)
White	44 lbs	78 lbs	MS1	\$23.75

**Yamaha**

**Secondary (Driven) Clutch Spring**

- Designed from the highest quality materials available.
- Fine tune shift rate, side load pressure, and full shift out poundage
- All EPI springs are manufactured using a 5% tolerance. (Lowest in the Industry)



Color	3" Load	1 3/4" Load	Part #	Price (F)
-------	---------	-------------	--------	-----------

<b>Fits 350 Bruin</b>				
Green	135 lbs.	235 lbs.	YDS4	\$23.75

<b>Fits 400, 450 Kodiak; 450 Wolverine; 350, 450, 600, 660, 700 Grizzly; 450, 660, 700 Rhino</b>				
White	215 lbs.	350 lbs.	YDS5	\$23.75
Gold	200 lbs.	330 lbs.	YDS7	\$23.75
Purple	195 lbs.	315 lbs.	YDS6	\$23.75
Orange	190 lbs.	310 lbs.	YDS3	\$23.75
Blue	160 lbs.	280 lbs.	YDS1	\$23.75
Red	160 lbs.	250 lbs.	YDS2	\$23.75

**"Titanium" Clutch Spring**

- Designed for extended life in demanding applications.
- 40% lighter.
- Resist fading due to high heat conditions.
- Highest quality, most durable material available today for clutch springs.



**Titanium Primary (Drive) Clutch Spring**

Part #	Price (F)	2 1/2"	1 1/4"	1 1/4"
--------	-----------	--------	--------	--------

<b>Arctic Cat, Kawasaki, Suzuki ATV</b>				
TATV1	\$67.48	35 lbs	54 lbs	140 lbs
TATV8	\$67.48	0 lbs	24 lbs	160 lbs

<b>Polaris ATV</b>				
TDR4	\$67.48	35 lbs	54 lbs	140 lbs
TDR6	\$67.48	0 lbs	24 lbs	160 lbs

**Secondary (Driven) Clutch Spring**

Part #	Price (F)	2 1/2"	1 1/4"
--------	-----------	--------	--------

<b>Arctic Cat, Kawasaki, Suzuki ATV</b>			
TSS3	\$88.16	52.2 kg	99.9 kg

<b>Polaris ATV</b>			
TDV1	\$88.16	115 lbs	220 lbs



### ATV Roller Weights



#### for Arctic Cat & Suzuki

- Fits Arctic 500 auto, Suzuki Vinson & King Quad.
- Fine tune your upshift and peak rpm.
- Sold in sets of 8

Gram	Part #	Price (F)
12	WEAC5012	\$59.46
14	WEAC5014	\$59.46
16	WEAC5016	\$59.46
18	WEAC5018	\$59.46
20	WEAC5020	\$59.46
22	WEAC5022	\$59.46
24	WEAC5024	\$59.46
Housing	WEAC5000	\$74.94

#### for Kymco

- Fine tune your upshift and peak rpm.
- Sold in sets of 6.
- 25.9 gram weight is adjustable

Gram	Part #	Price (F)
------	--------	-----------

##### Fits 50/90 cc

8	WE245008	\$55.08
10	WE245010	\$55.08
11	WE245011	\$55.08

##### Fits 150 cc

12	WE243012	\$55.08
14	WE243014	\$55.08
16	WE243016	\$55.08
20	WE243020	\$55.08
25.9	WE243025	\$55.08

##### Fits 250 Mongoose

20	WE244020	\$55.08
24	WE244024	\$55.08

##### Fits 500 MXU – Non-Adjustable

10	WEKY1010	\$59.46
12	WEKY1012	\$59.46
14	WEKY1014	\$59.46
16	WEKY1016	\$59.46
18	WEKY1018	\$59.46
20	WEKY1020	\$63.04
Housing	WEKY0000	\$69.41

##### Fits 500 MXU – Adjustable

Host (12g)	WEKYADJ1	\$55.08
2g Insert	WEKYADJ2	\$66.11
4g Insert	WEKYADJ4	\$66.11
6g Insert	WEKYADJ6	\$66.11
8g Insert	WEKYADJ8	\$66.11



#### for Polaris 50/90 Predator, Sportsman, Scrambler

- Fine tune your upshift and peak rpm.
- Sold in sets of 6.
- 10 gram weight is adjustable

Gram	Part #	Price (F)
5.0	WE242050	\$55.08
5.6	WE242056	\$55.08
6.1	WE242061	\$55.08
10	WE242100	\$55.08

#### for Polaris 200 Phoenix

- Fine tune your upshift and peak rpm.
- Sold in sets of 6.
- 25.9 gram weight is adjustable

Gram	Part #	Price (F)
12	WE243012	\$55.08
14	WE243014	\$55.08
16	WE243016	\$55.08
20	WE243020	\$55.08
25.9	WE243025	\$55.08

#### for Polaris 400 Sportsman HO 2008

- Fine tune your upshift and peak rpm.
- Sold in sets of 6.

Gram	Part #	Price (F)
12	WE249912	\$55.08
14	WE249914	\$55.08
16	WE249916	\$55.08
20	WE249918	\$55.08
Housing	WE249900	\$69.41

#### for Yamaha

- Fits 350 Bruin, 450 Kodiak, Grizzly, Wolverine and Rhino.
- Fine tune your upshift and peak rpm.
- Sold in sets of 8.

Gram	Part #	Price (F)
<b>Non-Adjustable Rollers</b>		
10 g	WE241010	\$55.08
12 g	WE241012	\$55.08
14 g	WE241014	\$55.08
16 g	WE241016	\$55.08
18 g	WE241018	\$55.08
20 g	WE241020	\$55.08
22 g	WE241022	\$63.04
Housing	WE240000	\$69.41

##### Adjustable Rollers

Host (12g)	WE24ADJ1	\$55.08
2g Insert	WE24ADJ2	\$66.11
4g Insert	WE24ADJ4	\$66.11
6g Insert	WE24ADJ6	\$66.11
8g Insert	WE24ADJ8	\$66.11

### Polaris Clutch Weights

Description	Weight	Part #	Price (E)
16mod Weight	40 grams	P5630280	\$34.99
16 Weight	43 grams	P5630279	\$18.70
10RH Weight	44 grams	P5630709	\$15.95
F Weight	45 grams	P5630515	\$15.95
10WH Weight	46 grams	P5630710	\$19.95
10BH	47.5 grams	P5630711	\$19.95
G Weight	48 grams	P5630514	\$16.95
10M5 Weight	49.5 grams	P1321528	\$31.44
C Weight	50 grams	P5630418	\$10.95
10MH Weight	50.5 grams	P5630513	\$19.95
10 Weight	51.5 grams	P1321526	\$33.01
S53 Weight	53 grams	P5630095	CALL
10AL Weight	53 grams	P1321531	\$31.95
10-55 Weight	54 grams	P1321685	CALL
S-55 Weight	55 grams	P5630509	\$17.95
10A Weight	55 grams	P1321589	\$29.95
10-56 Weight	56 grams	P1321684	\$29.95
S58 Weight	58 grams	P5630581	\$15.95
10-58 Weight	58 grams	P1321588	\$29.95
10-60 Weight	60 grams	P1321587	\$29.95
10-62 Weight	62 grams	P1321586	\$29.95
10-64 Weight	64 grams	P1321585	\$29.95
10-66 Weight	66 grams	P1321584	\$29.95





**Belly Buster Weights**

- Aggressive style produces stronger low and mid-range pull.
- Made from billet tool steel and then heat treated and plated for extended life use and durability.
- Weight is proportioned to provide more aggressive upshift.

**for Kawasaki, Arctic Cat, & Suzuki**

- Sold in sets of 4.
- Fits all 650 & 750 Prairie (all years), 650 Brute Force (05-08), 750 Brute Force (05-07), 700 KFX, Arctic Cat 650V2, Suzuki Twin Peaks.

Weight	Style	Part #	Price (F)
52 Grams	Non-Bushed	90052S	\$149.94
54 Grams	Non-Bushed	90054S	\$149.94
56 Grams	Non-Bushed	90056S	\$149.94
58 Grams	Non-Bushed	90058S	\$149.94
60 Grams	Non-Bushed	90060S	\$149.94

**for Kawasaki 2008 Brute Force**

- Sold in sets of 4.

Weight	Style	Part #	Price (F)
52 Grams	Bushed	99952S	\$190.42
54 Grams	Bushed	99954S	\$190.42
56 Grams	Bushed	99956S	\$190.42
58 Grams	Bushed	99958S	\$190.42
60 Grams	Bushed	99960S	\$190.42



**for Polaris**

- Sold in sets of 3.
- Fits all Polaris ATV & All Polaris Snowmobile models.

Weight	Part #	Price (F)
54 Grams	80054S	\$118.99
56 Grams	80056S	\$118.99
58 Grams	80058S	\$118.99
60 Grams	80060S	\$118.99
62 Grams	80062S	\$118.99
64 Grams	80064S	\$118.99
66 Grams	80066S	\$118.99
68 Grams	80068S	\$118.99
70 Grams	80070S	\$118.99
72 Grams	80072S	\$118.99
74 Grams	80074S	\$118.99
76 Grams	80076S	\$118.99
78 Grams	80078S	\$118.99
80 Grams	80080S	\$118.99
82 Grams	80082S	\$118.99

**Bushing for Weights**

- Replaces worn or damaged bushings.
- Sold in sets of 3 or 12.
- WB weights fit EPI Belly Buster Polaris 800 part numbers, OE Polaris and Adjustable series 500 part number weights.

Qty	Polaris Weights		750 Brute Force	
	Part #	Price (F)	Part #	Price (F)
3 pk	WB	\$18.99	KB	\$25.23
12 pk	WB12	\$71.37	KB12	\$68.91
each	15-152-3	\$6.95		

**"Torquer"**

- Designed for 4-stroke Hi-torque motors.
- Comes with bushing
- Made from billet tool steel and then heat treated and plated for extended life use and durability.
- Better low-end belt squeeze than stock weight.

Weight	Part #	Price (F)
64 Grams	88864S	\$118.99
66 Grams	88866S	\$118.99
68 Grams	88868S	\$118.99
70 Grams	88870S	\$118.99
72 Grams	88872S	\$118.99
74 Grams	88874S	\$118.99



**ATV Progressive Helixes for Polaris**

Description	Angle	Part #	Price (F)
Progressive	46-38°	WE224638	\$77.13



- Precision cut helixes
- Progressive style
- Designed for the performance tuner
- Not designed to work in engine braking clutches
- Most Polaris ATV's come with a straight 40 degree helix from the factory



**ATV Progressive Helixes for Polaris EBS ONLY**

Description	Angle	Part #	Price (F)
Progressive	46-38°	WE034638	\$77.13
Progressive	46-40°	WE034640	\$77.13

- Precision cut helixes
- Progressive style
- Designed for the performance tuner
- **These helixes are designed to work in engine braking clutches**

### Polaris

#### Primary Clutch Rebuild Kits

- New and improved clutch rebuild kits.
- Rebuild your primary clutch "completely" with one kit.
- kit components vary by model.
- Kit includes: Cover bushing, movable bushing, weight pins, weight pin nuts, buttons, button shims, o-rings, rollers, roller pins & roller washers.



Model	Year	Primary Rebuild Kits		Secondary Rebuild Kits	
		Part #	Price (F)	Part #	Price (F)
250 Big Boss 6x6	91-92	WE210145	\$211.85	-	-
250 Big Boss 4x6	89-92	WE210145	\$211.85	-	-
250 Trail Blazer 2x4	96-06	WE210155	\$211.85	WE213215	\$71.37
250 Trail Blazer 2x4	90-92	WE210145	\$211.85	-	-
250 Trail Boss 2x4	00-02	-	-	WE213215	\$71.37
250 Trail Boss 2x4	1999	WE210155	\$211.85	WE213215	\$71.37
250 Trail Boss 2x4	95-98	WE210155	\$211.85	-	-
250 Trail Boss 2x4 / 4x4	89-92	WE210145	\$211.85	-	-
250 Xplorer 2x4	00-01	-	-	WE213215	\$71.37
250 Xplorer 4x4	00-02	WE210155	\$211.85	-	-
300 Xplorer 2x4	1999	WE210165	\$209.46	WE213215	\$71.37
300 Xplorer 4x4	96-98	WE210165	\$209.46	-	-
300 Xpress 2x4	1999	WE210165	\$209.46	WE213215	\$71.37
300 Xpress 2x4	96-98	WE210165	\$209.46	-	-
325 Magnum 2x4	01-02	WE210165	\$209.46	WE213215	\$71.37
325 Magnum 2x4	2000	WE210155	\$211.85	WE213215	\$71.37
325 Magnum 4x4	01-02	WE210165	\$209.46	WE213215	\$71.37
325 Magnum 4x4	2000	WE210155	\$211.85	WE213215	\$71.37
325 Magnum (EBS) 4x4	00-01	-	-	WE213220	\$184.46
325 Trail Boss 2x4	2002	WE210165	\$209.46	-	-
325 Trail Boss 2x4	2001	WE210165	\$209.46	WE213215	\$71.37
325 Trail Boss 2x4	2000	WE210165	\$209.46	-	-
330 ATP 4x4	04-05	WE210165	\$209.46	WE213215	\$71.37
330 Magnum 2x4	03-05	WE210165	\$209.46	WE213215	\$71.37
330 Magnum 4x4	04-06	WE210165	\$209.46	WE213215	\$71.37
330 Magnum 4x4	2003	WE210165	\$209.46	WE213220	\$184.46
330 Magnum (EBS) 4x4	2004	WE210165	\$209.46	WE213200	\$234.46
330 Trail Blazer 2x4	2008	WE210165	\$209.46	WE213215	\$71.37
330 Trail Boss 2x4	03-08	WE210165	\$209.46	WE213215	\$71.37
335 Sportsman 4x4	2000	-	-	WE213215	\$71.37
335 Sportsman 4x4	1999	WE210155	\$211.85	WE213215	\$71.37
335 Worker 4x4	1999	-	-	WE213215	\$71.37
350 Trail Boss 2x4 / 4x4	90-92	WE210155	\$211.85	-	-
400 2x4	1995	WE210165	\$209.46	-	-
400 Big Boss 6x6	95-97	WE210165	\$209.46	-	-
400 Scrambler 2x4	01-02	-	-	WE213215	\$71.37
400 Scrambler 2x4	2000	WE210165	\$209.46	WE213215	\$71.37
400 Scrambler 4x4	2002	WE210165	\$209.46	WE213215	\$71.37
400 Scrambler 4x4	2001	-	-	WE213215	\$71.37
400 Scrambler 4x4	2000	WE210165	\$209.46	WE213215	\$71.37
400 Scrambler 4x4	95-99	WE210165	\$209.46	-	-
400 Sport 2x4	1999	WE210165	\$209.46	WE213215	\$71.37
400 Sport 2x4	96-98	WE210165	\$209.46	-	-
400 Sport 2x4	94-95	WE210155	\$211.85	-	-
400 Sportsman 4x4	01-05	WE210165	\$209.46	WE213215	\$71.37

#### Complete Secondary Clutch Rebuild Kit for EBS

- For EBS roller Secondary Clutches only.
- New and improved clutch rebuild kit.
- Rebuild your secondary clutch "completely" with one kit.
- Kit includes: Secondary rollers, Cover bushing, Bushing, Screw, Snap Ring.



Model	Part #	Price (F)
Polaris EBS models only	WE213200	\$234.46



**Polaris**

Model	Year	Primary Rebuild Kits		Secondary Rebuild Kits	
		Part #	Price (F)	Part #	Price (F)
400 Sportsman 4x4	95-96	WE210165	\$209.46	-	-
400 Trail Blazer 2x4	2003	WE210165	\$209.46	WE213215	\$71.37
400 Xplorer 4x4	99-02	WE210165	\$209.46	WE213215	\$71.37
400 Xplorer 4x4	95-98	WE210165	\$209.46	-	-
400 Xpress 2x4	96-97	WE210165	\$209.46	-	-
425 Magnum 2x4	96-98	WE210165	\$209.46	-	-
425 Magnum 2x4	1995	WE210155	\$211.85	-	-
425 Magnum 4x4	96-97	WE210165	\$209.46	-	-
425 Magnum 6x6	96-97	WE210165	\$209.46	-	-
450 Sportsman 4x4	06-07	WE210165	\$209.46	WE213215	\$71.37
500 ATP 4x4 (after 7/1/03)	04-05	WE210180	\$219.99	WE213200	\$234.46
500 ATP 4x4 (before 7/1/03)	2004	WE210180	\$219.99	WE213220	\$184.46
500 Big Boss 6x6	1999	WE210165	\$209.46	WE213215	\$71.37
500 Big Boss 6x6	1998	WE210165	\$209.46	-	-
500 Magnum (EBS) 4x4	99-02	WE210180	\$219.99	WE213220	\$184.46
500 Magnum RMK (EBS) 4x4	2002	WE210180	\$219.99	WE213220	\$184.46
500 Magnum 4x4	2000	-	-	WE213215	\$71.37
500 Ranger 2x4 / 4x4	04-08	WE210165	\$209.46	WE213215	\$71.37
500 Ranger 6x6	04-05	WE210165	\$209.46	WE213215	\$71.37
500 Ranger EFI 4x4	06-08	WE210165	\$209.46	WE213215	\$71.37
500 Scrambler 2x4	01-02	WE210165	\$209.46	WE213215	\$71.37
500 Scrambler 4x4	02-08	WE210165	\$209.46	WE213215	\$71.37
500 Scrambler 4x4	99-01	WE210165	\$209.46	WE213215	\$71.37
500 Scrambler 4x4	97-98	WE210165	\$209.46	-	-
500 Sportsman 4x4	96-98	WE210165	\$209.46	-	-
500 Sportsman DUSE (EBS) 4x4	2001	WE210180	\$219.99	WE213220	\$184.46
500 Sportsman 4x4	2000	-	-	WE213215	\$71.37
500 Sportsman (EBS) 4x4	99-00	WE210180	\$219.99	WE213220	\$184.46
500 Sportsman (EBS) 4x4	1998	WE210180	\$219.99	-	-
500 Sportsman EFI 4x4	2008	WE210165	\$209.46	-	-
500 Sportsman EFI 4x4	2007	WE210165	\$209.46	WE213200	\$234.46
500 Sportsman EFI 4x4	2006	WE210185	\$263.04	WE213200	\$234.46
500 Sportsman EFI Touring 4x4	2008	WE210165	\$209.46	-	-
500 Sportsman HO 4x4	06/08	WE210165	\$209.46	WE213215	\$71.37
500 Sportsman HO 4x4	2005	WE210180	\$219.99	WE213200	\$234.46
500 Sportsman HO (EBS) 4x4	01-04	WE210180	\$219.99	WE213220	\$184.46
500 Sportsman 6x6	01-08	WE210165	\$209.46	WE213215	\$71.37
500 Sportsman 6x6	2000	WE210165	\$209.46	-	-
500 Sportsman EFI X2 4x4	07-08	WE210185	\$263.04	-	-
500 Sportsman X2 4x4	2006	WE210185	\$263.04	WE213200	\$234.46
500 Worker 4x4	99/01	-	-	WE213220	\$184.46
500 Xplorer 4x4	1997	WE210165	\$209.46	-	-
600 Sportsman 4x4	2005	WE210175	\$263.04	WE213200	\$234.46
600 Sportsman 4x4 (after 7/1//03)	2004	WE210175	\$263.04	WE213200	\$234.46
600 Sportsman 4x4 (before 7/1/03)	2004	WE210175	\$263.04	WE213220	\$184.46
600 Sportsman 4x4	2003	WE210175	\$263.04	WE213220	\$184.46
700 MV7 4x4	2005	WE210175	\$263.04	-	-
700 Ranger Crew 4x4	2008	WE210185	\$263.04	-	-
700 Ranger EFI 6x6	2008	WE210185	\$263.04	-	-
700 Ranger EFI 6x6	06-07	WE210910	\$253.51	-	-
700 Ranger XP 4x4	2008	WE210185	\$263.04	-	-
700 Ranger XP 4x4	05-07	WE210910	\$253.51	-	-
700 Sportsman 4x4	2006	WE210185	\$263.04	-	-
700 Sportsman 4x4	2005	WE210175	\$263.04	-	-
700 Sportsman 4x4 (after 7/1/03)	2004	WE210175	\$263.04	WE213200	\$234.46
700 Sportsman 4x4 (before 7/1/03)	2004	WE210175	\$263.04	WE213220	\$184.46
700 Sportsman 4x4	02-03	WE210175	\$263.04	WE213220	\$184.46
700 Sportsman EFI 4x4	2007	WE210910	\$253.51	-	-
700 Sportsman EFI 4x4	2006	WE210185	\$263.04	-	-
700 Sportsman EFI 4x4	04-05	WE210175	\$263.04	-	-
800 Sportsman EFI 4x4	2007	WE210910	\$253.51	-	-
800 Sportsman EFI 4x4	05-06	WE210185	\$263.04	-	-
800 Sportsman EFI 4x4	2008	WE210185	\$263.04	-	-
800 Sportsman EFI X2 4x4	2007	WE210185	\$263.04	-	-
Diesel (EBS) 4x4	99-01	WE210180	\$219.99	WE213220	\$184.46
Ranger 6x6	1999	WE210165	\$209.46	WE213215	\$71.37



## Clutch Kits for Kawasaki

### New Kits for '08 Brute Force 750 EFI 4x4

The new Brute 750 has a new primary clutch with improved "wide bushing" design. The DaltonPro clutch kit for the newer model is available in two configurations based on the rider's application priority. Kits are interchangeable by adding or subtracting a spring. Both kits feature the same set of Dalton's patented **Quick Adjust Cam Arms**.

**Ultimate Belt Grip** Optional mass placement location for total grams means more accurate calibration for specific application.

**Ultimate RPM Control** The extreme flexibility of this kit makes it easy to adapt to different RPM requirements of big bore kits, camshafts, altitude, etc.

**Ultimate Adjustability** DaltonPro Quick Adjust Cam Arm Flyweights are *like having multiple sets of flyweights all in one set!* The quick adjust feature allows adding or subtracting grams in the threaded passage through the main body of the fly-weight while the weight is still in the drive clutch.



08 and up Brute Force 750 EFI 4x4

For Stock or oversized tires to 27" - Adjustable for altitude and tire size

**DK 750 E**

This kit is designed specifically to fit the new style drive clutch on the '08 750 Brute Force with the wide bushing. Improved acceleration



08 and up Brute Force 750 EFI 4x4

28" and larger tires (will not fit 05-07 model years)

**DK 750 EBT**

Designed for the new '08 750 Brute Force with the newer wide bushing drive clutch. This kit was developed to help recover losses incurred from installing large aggressive tires and mud conditions with 28" and larger sizes. Improved

and backshifting under load. Makes high range more useful at low speeds. Also offers flexibility to tune your clutch to rider preference and conditions. Two different primary springs are included to allow for preferred engagement rpm.

This kit incorporates the use of Dalton's patented **Quick Adjust Cam Arms**. This system allows adding or subtracting of the mass to the main body of the flyweights without removing the weights from the drive clutch. Quick adjust feature means you can have a preferred set up for stock tires, altitude, or oversized tires quicker if you ride under varying circumstances or change tire sizes. No puller is required for most typical flyweight gram changes, as the base weight stays in the clutch during gram adjustment. Baseline set ups are included for most typical situations.

The stock secondary spring on the 750 Brute is different than Prairie models and is sufficient for most trail applications for this tire size range and does not effect top speed (although it is well known that oversize tires DO hurt both acceleration and speed, proper clutch recalibration can help recover from those losses). If you are running 28" or larger tires for mud application use part # DK 750 EBT or order optional secondary spring DPSS-AQ.

belt grip, throttle response, acceleration and backshifting under load helps low end power for the big tires in mud situations.

**This kit uses the same patented Quick Adjust Cam Arm set as the kit for smaller tires sizes (DK 750 E)** so the kits can be interchangeable by the use of the stock or supplied secondary spring. The use of the DaltonPro Quick Adjust weights (cam arms) means you can add or subtract mass in the flyweights while they remain in the drive clutch. Base line set up instructions are included for most common applications.

Part #	Price (E)
DK750E	\$349.95
DK750EBT	\$349.95

These kits are **NOT for use on the Teryx** utility vehicle. Do not assume it is a similar application because of similar engine size. The requirements of the cvt system are very different in that application. These kits **will NOT fit the 05-07** model year 750 Brute Force.

## Clutch Kits for Kawasaki



05-07 Brute Force 750 4x4  
For 05 07 models only

**DK750 BF** This sport-oriented clutch kit for the powerful

Brute Force 4x4 offers improved acceleration and throttle response. Increased belt grip offers a more usable high range at lower speeds. This kit contains a "mass adjustable" flyweight system making it flexible for clutch tuning. The flyweights *total mass* and *location of mass* can be adjusted by means of removable rivets. Instructions are included, complete with a baseline setup for both *stock* and *oversized tires*.

*Did you know?...*

The BF750 engine is a different configuration than previous Prairie Models. The BF750 has its own new stock secondary spring that is different (heavier) than what comes on Prairie versions. The stock secondary spring on the BF 750 is sufficient for most typical trail applications.



Aqua

**DPSS-AQ (Aqua)** Optional secondary clutch spring for Kawasaki V-twin models.

A nice addition to the DK 750 BF clutch kit when using 28" and bigger tires in mud applications. Stiffer initial load rating means slower upshift, better belt grip and better low speed response in mud conditions with bigger tires. A slight loss in top speed can sometimes be associated, but provides a nice boost for larger tires in mud applications



Violet

**DPSS-V (Violet)** Optional secondary spring for Kawasaki V-twin models

This secondary spring option was designed for use with some of today's super sized mud tires. Mud specific 30"-32" tires can be hard on many parts of an atv, including the belt and cvt system. This spring will lose top speed but will keep you in lower ratio in the thick gumbo mud.



**COMING SOON..**

Dalton Kit for Teryx. This new model not only comes with a new drive clutch, it is a different calibration, body weight, and intended use. We are currently in development of components for this model. **WATCH OUR WEBSITE FOR DEVELOPMENTS !**

**Kawasaki Secondary Springs**

	Part #	@2.5"	@1.25"
Dalton Plain/Purple	DPSS-P/PL	51 kg.	103 kg.
Dalton Aqua	DPSS-AQ	61 kg.	112 kg.
Dalton Violet	DPSS-V	51 kg.	120 kg.
		@2.5"	@1.25"
Stock secondary spring on Prairie/ KFX 700 models (yellow)		44 kg.	98 kg.
Stock secondary spring on the BF 750 4x4 ATV model only (purple)		36 kg.	111 kg.

Note these secondary springs for Kawasaki models are load-rated in kilograms (kg).

Part #	Price (E)
DK750BF	\$277.95
DPSS-AQ	\$43.95
DPSS-V	\$43.95
DPSS-P/PL	\$43.95
DPSS-AQ	\$43.95
DPSS-V	\$43.95

## Clutch Kits for Kawasaki

The powerful Kawasaki 650 and 700 V-twin engine format is used in many ATV models. The Prairie 650 / 700 Prairies and 650 Brute Force models, the Suzuki Twin Peaks, and the Arctic Cat 650 V-2 4X4.

Similar engine design has made clutching somewhat similar, however, things like dry weight, tire size and weight, transmission calibration and, in the case of the V-Force, different ignition and valve timing, have created slightly different required shift characteristics.

**Our field testing has resulted in the following options:**

### Kawasaki 650/700 Prairie, Brute Force 650i Models

Stock, 0-2000' elevation, tires up to 26"

#### DK650/700S



This combination of a new, slightly heavier secondary spring and our plain/white primary spring has resulted in better belt grip and an increase in bottom and mid-range throttle response and acceleration. Better belt life and improved backshifting for off trail situations have made this kit very popular. For use with 25"-26" tires.



Oversized tires 27-28"

#### DKA 6570MT

This kit combines our popular plain/purple secondary spring with a new primary spring that has slightly higher fully compressed load rating. This combination has proven most effective for the above applications. This kit is also the best choice for

High Altitude applications. For more aggressive acceleration and higher engagement (race applications), some prefer to add our black/white spring Part #DPPS-B/W to the above 4x4 clutch kits.

See page 5 for more optional secondary springs for case specific applications. The DPSS-AQ (Aqua) is popular with the 28" and bigger tires for mud applications.



#### DPPS-O/BL

The optional orange/blue primary spring is sometimes used with the plain/purple secondary springs provided in the above kits for specific applications and rider preferences. It's slightly higher engagement than the Plain/white or the blue, and has a

stronger fully compressed load rating. Some riders at higher elevations, and /or extreme mud tires prefer its characteristics. Use of this spring often results in a slight loss of top speed when used with stock tire sizes.

### Billet Clutch Covers for Kawasaki Non Engine Brake



**DCC-101** This clutch Cover is CNC machined from aircraft quality billet aluminum and is hard anodized for a durable surface. It offers more strength, lighter weight, and better cooling for the Kawasaki KFX 700 V-Force drive clutch. It comes complete with bushing. Faster revs, better cooling, more belt travel, this component is most effective on modified machines with dual exhaust, etc. that operate at a higher rpm. See components, page 13.

### KFX 700 V-Force



#### DK700V

The DaltonPro V-Force clutch kit includes a new primary spring and our new billet steel flyweights specifically designed for the KFX 700 and offers increased acceleration and better belt life. Can be used for stock machines or with twin pipes. (When this kit is used on modified models with twin pipes,

porting, etc, to increase hp, further gains can be achieved by adding our billet overdrive clutch cover, for race applications only. Part # DCC 101. (See clutch tuning -page 14.) Some racers prefer our new optional orange/blue primary spring (DPPS-O/BL) for sand and race applications.

**Primary clutch pullers DCP-G.** (All V twin models *except* Teryx) Required for proper belt removal on all V twin models.

**For 08 Teryx Utility Vehicle DCP-J** (For Teryx only) (See clutch tuning- page 14.)

Part #	Price (E)
DCC-101	\$219.95
DCP-G	\$50.95
DCP-J	\$50.95
DK650/700S	\$73.95
DKA6570MT	\$73.95
DK700V	\$269.95
DPPS-O/BL	\$33.95

### FAQ- How will a clutch kit affect top end speed?

Very little. The major thing to remember when clutching ATVs is that changing clutch components changes the rate of shift on the CVT system during the "clutching phase". The clutching phase is when the belt travels from low ratio to high ratio (high ratio is when the belt is to the top of its travel on the front motor clutch). The goal is to control the shift RPM properly during this clutching phase. On most ATVs this "clutching phase" is over in a distance of approximately 500-800 ft.-when the belt is fully shifted, it is fully shifted. There are a few situations where slightly different spring pressures will allow it to stay in high ratio easier on certain types of terrain, but effect on top mph is minimal.



Suzuki King Quad 450

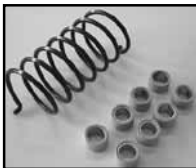
**DSK 450** This new kit for the 450 King Quad increases throttle response and acceleration with no loss of top speed when set up correctly for your application. This is an adjustable kit and contains various combinations of complete drop in roller assemblies (plastic outer housing included) for easy installation set up guide included for stock tires, oversize tires or altitude.

Suzuki Vinson 500 4x4 (03 and up)



**DSA 500MT**

Our heavier secondary spring has already proven to prolong belt life and help with bottom end response on these models. Now, in addition to that we have assembled a complete clutch kit including new rollers for the primary clutch. This complete clutch recalibration helps recover power lost from oversize mud tires.



**Suzuki Vinson 500 4x4, 07/08 Moose Tracker (import) 500 Auto**  
New kit with complete drop in roller assemblies

**DMT 500C** A new kit that contains complete drop in roller assemblies. This kit is designed to re-calibrate the shift pattern to help recover some of the losses from installing oversized tires. Bottom and midrange acceleration and performance are greatly improved. Also aids in performance when operating at higher elevations. This kit can be used with stock or oversized tires, however, when used with stock tires at low elevation it can cause a slight loss of top speed.

Suzuki Twin Peaks 4X4



700 V-twin model, 0"-2000" elevation, tires 25"-26"

**DK 650/700S**

This combination of new slightly heavier secondary spring and our plain/white primary spring, has resulted in better belt grip and an increase in bottom and midrange throttle response and acceleration. Better belt life and improved backshifting for off trail situations have made this kit very popular. For use with 25"-26" tires.

Oversized tires 27"-28"



**DKA 6570MT** This kit combines our popular plain/purple secondary spring with a new primary spring that has slightly higher fully compressed load rating. This combination has proven most effective for the above applications. This kit is also the best choice for **High Altitude** applications. For more aggressive acceleration and higher engagement (race applications), some prefer to

add our black/white spring Part #DPPS-B/W to the above V- twin 4x4 clutch kits.

Clutch Kits for Suzuki



Suzuki King Quad 700 EFI 4X4 (05 and up)

**DSK700EF**

Improved acceleration and backshifting and maintains more consistent RPM under load conditions. A new secondary spring and roller weights developed specifically for this model. This clutch recalibration kit works well to help recover the dramatic losses resulting from oversized tires on this model. It can, however, be used

with stock tire sizes as well for situations requiring better low speed/midrange response and performance (e.g: mud/work). Use with stock tires may result in a minimal loss of top speed. There is no increase in engagement (stall) speed rpm so this kit still works well for low speed maneuverability like rock crawling, etc. It also helps restore power loss from higher elevations

Suzuki 750 King Quad 4x4



**DSK 750 C** This new version of our proven DSK700EF kit now comes with "complete roller assemblies." Complete rollers means quicker, easier installation, and a new wear surface at the time of installation. Improved acceleration, backshifting and throttle response. More consistent rpm under road conditions.

Can be used with stock or oversized tires. For extreme mud tires, eg 29.5" and bigger Kit# DSK750 HAC is recommended. 06-07 Arctic 700 EFI 4x4 (Suzuki engine model ONLY)



**DSK 750 HAC** A kit designed for increased acceleration and backshifting when using the big mud tires. Also aids in recovery of power lost at high elevations (above 4000 ft) with moderate typical trail tires. Not for use with stock tires at low elevation. For stock to 28" tires at low elevation use kit # DSK750 C Also fits 05-07 Suzuki King

Quad 700EFI 4x4, 06-07' Arctic Cat 700EFI 4x4 (Suzuki engine model ONLY).

Part #	Price (E)
DK650/700S	\$73.95
DKA6570MT	\$73.95
DMT500C	\$174.95
DSK450	\$153.95
DSA500MT	\$133.95
DSK700EF	\$133.95
DSK750C	\$174.95
DSK750HAC	\$174.95

## Clutch Kits for Polaris



### Polaris Sportsman 500 EFI

06 and up fuel injected models w/EBS  
0- 3000' Oversized tires only  
**DBW500EF**

A cost-effective kit designed to help restore some of the acceleration lost from installing bigger tires.

#### Some notes on this model

This new 500 fuel injected model is indeed somewhat different than previous 500 HO models. Aside from having fuel injection, it also uses a new primary drive clutch that starts off in a lower ratio, and uses a different belt compound. Testing showed that when using stock tires, the clutch calibration from the factory was satisfactory and no adjustment was necessary.

Oversized tires, as usual, did show a significant loss of performance, speed, and acceleration. This kit will help bring your bike back to life after installing those bigger, heavier tires, and also improve belt grip and throttle response. Top speed on this model is slower with big tires than with stock tires, and it will remain the same (within 1-2 mph) with this kit installed. This kit is NOT for use with stock tires at low elevations.

### Polaris Sportsman 800 EFI 2006

**Stock Tires** – If you intend to stay with stock tires on the new 800 EFI 4x4, we have found it is very well calibrated in stock form for most conditions. If our testing does not show significant gains in belt grip, acceleration or speed / backshifting without negative trade offs somewhere else in the powerband, we prefer to simply use the stock calibration. There is nothing wrong with the fact that it has good clutch calibration from the factory. This model performs very well considering its total dry weight and stock tire size / configuration. Sometimes clutch set ups that “feel” better are simply NOT better when properly field tested.



**Oversized Tires DPPS – O/BL**  
The stock 800 EFI comes with 26" tires. If you choose to switch to heavier, more aggressive 26" w/10" wide fronts and most 27" tires, the 800 will perform better by simply adding our Orange/ blue (part # DPPS-O/BL) primary spring. For all 28" & up tires use complete kit (Part# DP 800EXT) - We simply prefer to not sell you more than what you need.



### Extreme Tires DP800EXT

Extreme mud tires.  
This clutch recalibration kit is designed for the serious mud runners and those using larger aggressive mud tires, (28" and up).  
For use on stock machine – 0-3000'. May cause slight loss of top speed

### Polaris Sportsman 700 EFI

2004.5 and up, 0-2000", stock tires only  
**DP700E**

Our initial testing showed the EFI 700 to work quite well in stock form. It did, however, have room for improvement. We designed a new primary spring and a custom-ground set of billet flyweights for this application, achieving much better belt grip in high range, less hitting of the rev limiter in loose conditions and more consistent RPM control with no loss of top speed. This kit engages right off idle just like the stock clutching and although drag racing results only show a slight advantage with this kit installed, (approx. one bike length in 400 ft.) high range is much more effective at lower speeds.



### Big wheel kit DP700 EBT

Proper clutch re-calibration is critical when oversized tires are added on the EFI 700. This kit drastically improves low speed belt grip and throttle response to bring your big Sportsman back to life.

To upgrade the stock tires kit to the Big Tire Kit, the following parts can be purchased individually.  
DPSS -B (Black secondary clutch spring),  
DPS-SW (Spacer washer)



### Polaris Sportsman 700, 2002-2004

#### DBW 700

Our most popular for the SP 700 was designed around the same objective as our successful DBW 500 kit. Great all around trail performance, with an emphasis on bottom and mid-range acceleration and improved belt grip. This kit works well to restore power loss from bigger tires, and is a favorite even with stock tires. (This kit often results in loss of 1-2 mph on top speed when used with stock tires.) -includes billet DaltonPro flyweights, new primary spring, new secondary spring. Designed for use with stock helix, stock or oversized tires.

#### DP700A

More aggressive acceleration for **high performance riders**. Includes a set of billet steel DaltonPro flyweights, a different primary spring, and a billet helix. This kit was designed for use with the gearing and rotational mass related to **stock tires**, and in fact can benefit from using lighter weight wheels and tires (not larger than stock size). **Not** for use with oversized tires.



## Clutch Kits for Polaris



### Sportsman 600

2003-04  
**DPPS-PW.** (Optional spring-stock tires)

Our testing of the new SP600 showed that this quad was very well calibrated "out of the crate" in stock form. Our new **Dalton plain/white** primary spring has only slight-

ly higher initial load, but slightly lower finish load than the stock primary spring. Use of the plain/white primary spring keeps the engine in a better part of its power curve all the way through the shift pattern. Better bottom/mid acceleration with 1 mph gain on top end resulted. For stock tire application.

### DBW600-Oversized Tires

With stock tires, our testing has shown this model to be quite well calibrated in stock form. With the addition of oversize mud tires, our heavier Dalton EBS black secondary spring was used in conjunction with our plain/white primary spring. We now package this popular combination in kit form, complete with instructions. The result is better belt grip and acceleration, along with much better throttle response and backshifting. When used with stock tires this kit may cause a slight loss of top speed (1-2 mph). Works well with high altitude applications.



### Sportsman 500 HO

2001-05  
**DBW 500**  
 (Bottom-mid-range for use with stock or oversized tires)  
 Our most popular kit for the 500HO, it is designed to increase belt grip and acceleration, without losing top speed with stock tires. This kit also works well to restore lost power resulting from bigger tires. Engagement is only slightly higher than stock. Includes billet steel DaltonPro flyweights, new primary spring, new secondary spring. Designed for use with the stock helix, and with stock or oversized tires.



### DP 500A



Not for use with oversized tires.

More aggressive acceleration for **high performance riders**. Includes a set of billet steel **DaltonPro flyweights**, a different **primary spring**, and a **billet helix**. Designed for use with the gearing and rotational mass related to **stock tires**, and in fact can benefit from using lighter weight wheels and tires (not larger than stock size).

### Sportsman 500 (with EBS) 1998-2000

#### DP 500 SP

Improved belt grip and bottom to mid acceleration without loss of top speed. This kit works well with stock 25" or 26" tires. This kit is NOT for use with larger than 26" tires.

**DBT 500 SP** Improved belt grip and bottom to mid acceleration. This kit was designed to get big tires turning in heavy mud applications and correct the shift ratio for larger tires.

### Polaris 500 Scrambler 1999-2004

#### DSC500

Includes our billet flyweights, a new primary spring, a new secondary spring, and a custom billet helix. Improved belt-grip, throttle response and bottom to mid acceleration without loss of top speed. Designed for stock tires (0-2000 ft. altitude).



### Sportsman 400 2001-2004, non EBS

**DP 400 SP** Improved belt grip and bottom to mid acceleration without loss of top speed. This kit works well with stock 25" or 26" tires.

**DBT 400 SP** Improved belt grip and bottom to mid acceleration. This kit was designed for extreme mud applications and to correct the shift pattern for larger, more aggressive tires (27" or 28").

### Ranger XP Utility Vehicle 2005 and up 700 EFI only

#### DUV - P7XP

The Ranger XP often exhibits over rev during its shift phase on typical hard packed trail surfaces at times even bumping the rev limiter prematurely during acceleration.

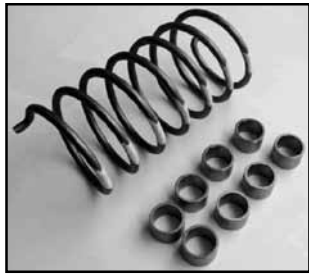
This kit includes a new primary spring and a set of flyweights that were ground specifically for this application. Better belt squeeze and quicker upshift / acceleration in mid range. - For stock tire sizes only.



Part #	Price (E)
DBT400SP	\$237.99
DBW500	\$237.99
DBW500EF	\$237.99
DBW600	\$73.99
DBW700	\$237.99
DP400SP	\$335.99
DP500A	\$335.99
DP500SP	\$335.99

Part #	Price (E)
DP700A	\$335.99
DP700E	\$205.99
DP700EBT	\$246.99
DP800EXT	\$246.99
DPSS-P/W	\$60.00
DSC500	\$359.99
DUV-P7XP	\$205.95

## Clutch Kits for Arctic Cat



**Arctic Cat 500i 4x4**  
03 & up oversized tires

**DSA 500 MT** Our heavier secondary spring has already proven to prolong belt life and help with bottom end response on these models. Now, in addition to that we have assembled a complete clutch kit including new rollers for the primary

clutch. This complete clutch recalibration helps recover power lost from oversize mud tires.

**Arctic Cat 500 auto / 07-08 Moose Tracker 4x4**

**DMT 500C** (New version with complete roller assemblies)

A new kit that contains complete drop in roller assemblies. This kit is designed to re-calibrate the shift pattern to help recover some of the losses from installing oversized tires. Bottom and midrange acceleration and performance are greatly improved. Also aids in performance when operating at higher elevations. This kit can be used with stock or oversized tires, however, when used with stock tires at low elevation it can cause a slight loss of top speed.



**Arctic Cat 650 V Twin 4x4**  
Stock & oversized tires 27-28"

**DKA 6570MT** This kit combines our popular plain/purple secondary clutch spring with the blue primary. This cost-effective combination has proven most effective for the 650 V twin. Stock flyweights are best for most applications on this model and

we prefer not to sell you more than what you need. The engagement speed of this kit is only very slightly more than stock, so it maintains excellent characteristics for slow speed maneuvering.



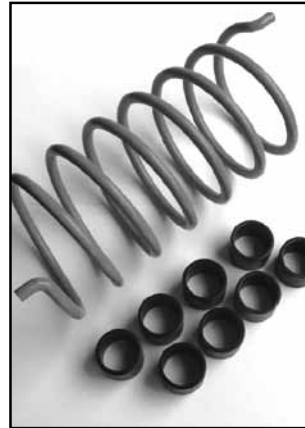
**DPSS-AQ**

The DPSS-AQ (Aqua) secondary spring is popular with the 28" and bigger tires for mud applications. For more case-specific info on Kawasaki/ Arctic V-twin models, see the Kawasaki secondary springs chart, page 5.



**DPSS-O/BI Extreme Mud Tires**

This optional primary spring has slightly higher engagement than the Blue spring in the DKA6570MT kit, but also has stronger compressed load rating. Works well with some of the new extreme mud tires in 28" and up. *Using this spring with smaller tires may result in a slight loss of speed.*



**AC 700 EFI 4x4, 06 & up, 1 cyl. only. Suzuki engine model only**

**DSK 700EF** Improved acceleration and backshifting and maintains more consistent RPM under load conditions. A new secondary spring and roller weights developed specifically for this model. This clutch recalibration kit works well to help recover the dramatic losses resulting from oversized tires on this model. It can, however, be used with stock tire sizes as well for situations requiring better

low speed/midrange response and performance (e.g: mud/work). Use with stock tires may result in a minimal loss of top speed. There is no increase in engagement (stall) speed rpm so this kit still works well for low speed maneuverability like rock crawling, etc. It also helps restore power loss from higher elevations

**AC 700EFI Suzuki engine model only**

**DSK 750C** This new version of our proven DSK700EF kit now comes with "complete roller assemblies." Complete rollers means quicker, easier installation, and a new wear surface at the time of installation. Improved acceleration, backshifting and throttle response. More constant rpm under road conditions. Can be used with stock or oversized tires.\*for extreme mud tires, eg 29.5" and bigger Kit# DSK750 HAC is recommended -Also fits 05-07 Suzuki King Quad 700EFI, 06-07 Arctic 700 EFI 4x4 (Suzuki engine model ONLY)



**DSK750 HAC** A kit designed for increased acceleration and backshifting when using big mud tires. Also aids in recovery of power lost at high elevations (above 4000 ft) with moderate typical trail tires. Not for use with stock tires at low elevation.\* For stock to 28" tires at low elevation use kit # DSK750 C. Also fits 05-07 Suzuki King Quad 700EFI 4x4, 06-07' **Arctic Cat 700EFI 4x4** (Suzuki engine model ONLY).

Part #	Price (E)
DSA500MT	\$133.95
DMT500C	\$174.95
DKA6570MT	\$73.95
DPSS-AQ	\$43.95
DPSS-O/BL	\$35.99
DSK700EF	\$133.95

Part #	Price (E)
DSK750HAC	\$174.95
DA650H	\$79.95
DA650HC	\$103.95
DUV-A650	\$77.95
DA650HC	\$103.95

## Clutch Kits for Arctic Cat



2005 ONLY, single cyl. only, oversized tires.  
DA 650-H



All model years, single cyl. only, oversized tires.  
DA 650-HC

### Arctic Cat 650 H-1 4x4

The popular Arctic 650 H-1 is calibrated fairly well for general use with stock tires, but oversized tires have a very negative effect. Many performance enthusiasts are well aware of the fact that even slightly bigger or heavier tires can substantially hurt acceleration and speed performance. The addition of this cost effective weight roller insert kit for the primary drive clutch helps recover some of that lost power. '06 and newer models MUST use the DA 650 HC kit with completed roller assemblies, as the plastic on the factory rollers are not removable.

*This kit is intended to help with re-calibration for oversized tires. If installed on a unit with stock tires, it does show some gain in acceleration but slight loss of top speed. It also aids in restoration of power lost at higher altitudes.*

## Coming Soon... Dalton Kit for Thunder Cat 4x4



### Prowler XT Utility Vehicle

The Prowler XT side by side utility vehicle was designed for a very wide variety of uses. The stock tires are 26" radials, but a very light weight style of tire, and the fronts are still 8" wide like many of the common 25" tires on ATV's. Our testing showed that given the intended use, the stock clutching was well calibrated for these tires.

### FAQ- What about internal engine mods?

Internal engine mods, like cylinder head porting, compression, big bores and especially camshafts of higher lift/ longer duration, can definitely change the engine characteristics and sometimes the clutching could be changed even further to optimize performance. Our kits are designed around stock- mildly modded ATV's. Quite often, when stepping into extensive engine mods, you may have to do your own field testing to optimize your clutching.

### '06 only Prowler XT- oversized tires DUV-A650

**For use only on the '06 model with older (compression spring ) secondary clutch.**



### '07-'08 Prowler XT -oversized tires DA 650 HC

**For '07 & newer 650 Prowler models (with new torsion style secondary clutch) use part # DA-650 HC for large tires and high altitude applications.**



The addition of oversized tires definitely hurt the performance of the Prowler. It is common and getting well-known that vehicles with oversized tires can never be as quick as ones with lighter/smaller stock tires. Many, however, need the better mud performance and ground clearance offered by aggressive big wheel kits. The use of this cost effective new roller kit helps restore some of that lost rpm and performance. Also helps with high altitude operation. *Note: For use with oversize tires only. Not for use with stock tires at low elevations (0-3000') This kit can be used for stock or oversized tires above 3000' elevation.*

Clutch Kits for Can-Am / BRP



Can - Am / BRP 800 HO Outlander 4x4

'06 & up for stock or oversized tires -  
Altitude adjustable.

**DBO 800** Improved bottom to mid range acceleration without sacrificing top speed. A new flyweight with a new curvature was designed specifically for this 800cc Outlander model. These new flyweights can be set up for different applications. You can set up this system for: improved acceleration with stock tires re-calibration to help recover losses from oversized tires, or to help control up shift at higher elevations. Baseline set up guide included for most common applications.

Can-Am 800 Renegade

**DBO 800 R**

The 800 Renegade is not only a lighter than the Outlander, it also has smaller stock tires. The 800R kit for this model comes with the same base flyweights as the Outlander kit, but has different rivets, calibrations, and set up instructions for 25" and 26" (aftermarket) tire sizes. *To use the DBO 800 kit on a Renegade with Stock Tires, order the optional rivets part # DFRL-Y. A Renegade with 27" or larger tires can be treated as an Outlander with respect to clutch calibration.*

**DFR Series Flyweight Rivets**

For information on available extra, or optional mass rivets for use in ATV applications, see the chart on page 15.



Can-Am/BRP 650 Outlander 4x4

**DBO 650** This new clutch recalibration for the CAN-AM 650 Outlander 4x4 offers flexible tuning options for stock or oversized tires and high elevations. Improved acceleration, throttle response and backshifting with no loss of top speed when set up properly for your application. *This kit uses a different adjustable base weight than the 800 cc kits.*



**Optional primary spring for DBO 650, DBO 800 & DBO 800R clutch kits**

**DPPS-TN (Tan)** Our popular kits for Can-Am 650 and 800 models come with the Green/Yellow primary spring for maximum acceleration and backshifting. Tan primary spring still has the load rating required to work with the supplied adjustable flyweights in the kit, but has a lower engagement rpm.



Can-Am/ BRP Outlander 400

*'03 & up 400HO 4x4, 0 - 3000' elevation, stock or oversized tires*

**DBO 400** Improved acceleration, belt grip; low speed throttle response & pull in the mid-range with no loss of top speed. This kit includes adjustable engagement (stall speed) RPM and the flyweights (levers) can be set up for stock or oversized tires.

**COMING SOON...**  
Outlander 500

**Clutch Kits for Yamaha**



**Yamaha 660 Grizzly 4X4**  
Oversized tires

**DBW 660Y**

Installation of larger tires results in taller gearing, heavier rotating mass, and a drastic negative effect on the performance of this model. This kit is designed to help restore that lost power, and bring your **Big Tire Grizzly** back to life. It was designed for use with oversized tires. Dalton does not currently recommend or offer a clutch kit for this model with stock tires.



**Grizzly 700 Grizzly 4x4**  
07 and up 700EFI oversized tires/ altitude

**DBW 700 Y**

A very cost effective method to help minimize the performance losses from installing oversized tires. This combination of different weight rollers for the drive clutch is a variable tuning kit and can be set up for different oversized tire/ altitude applications. There is no increase in engagement (stall) rpm, so this kit still works well for low speed manoeuvrability like rock crawling, etc.

**Some Notes on this Model**

The new Yamaha Grizzly 700 4x4 is a new improved version of its 660cc predecessor. Although the 686cc engine is not substantially larger or more powerful, it certainly has improved torque, throttle response and smoothness as a result of the electronic fuel injection (EFI). In stock form, the factory clutch calibration is fine for the supplied 25" tires, and no recalibration is necessary for the stock tires.

Many consumers prefer the ground clearance and traction advantage of larger, more aggressive mud tires. Most, however, are not prepared for the amount of performance lost by installing bigger tires. Installing larger, heavier tires on this model does have a drastic negative effect on acceleration performance.

Although an ATV with oversized tires can never be as quick as one with light weight stock tires, this kit can help recover some of the losses and breath some life back into your Grizzly. On the previous 660 models we have always included a new heavier secondary spring for the rear pulley. The new 700 model, however, comes from the factory with its own new heavier secondary spring that has proven satisfactory.

Part #	Price (E)
DBO800	\$245.95
DBO800R	\$245.95
DBO650	\$245.95
DPPS-TN	\$33.95
DBO400	\$319.95
DBW660Y	\$122.99
DBW700Y	\$109.99

**Clutch Tuning Components, Tools and Accessories**

**Billet Overdrive Clutch Covers for Kawasaki  
Non-Engine Brake**



**DCC-101**

This clutch Cover is CNC machined from aircraft quality billet aluminum and is hard anodized for a durable surface. It offers more strength, lighter weight, and better cooling for the Kawasaki KFX 700 V-Force drive clutch. It comes complete with bushing. Faster revs, better cooling, more belt travel, this component is most effective on modified machines with dual exhaust, etc. that operate at a higher rpm.

**Replacement Bushing  
DCC-RB**



Replacement bushing for Dalton DCC 101 overdrive clutch cover. Can also be used to replace worn bushings on the factory drive clutch cover.

**FAQ- Can the Dalton DCC-101 overdrive clutch cover be used on Prairie/ Brute Force models?**

Although it would fit physically, this part was designed for race applications on the KFX 700 and is not intended for use with KEBC engine brake system. In fact, with stock hp and the tires often used in most 4x4 applications, there would be very little benefit from overdrive.

**ATV Helixes- Polaris**

Part #	Price
DAP and DEP	\$126.95

Billet aluminum stainless steel spline hub, hard anodized. You can have DaltonPro quality for your Polaris ATV.

Polaris	Polaris W/EBS	Polaris W/EBS SP600 & SP700
---------	---------------	--------------------------------

DAP 38/34	DEP 38/34	DEP 38/34-7
DAP 40/34	DEP 38/35	DEP 38/35-7
DAP 40/36	DEP 39/35	DEP 40/35-7
DAP 40/38	DEP 40/35	DEP 40/36-7
DAP 42/36	DEP 40/36	DEP 42/36-7
DAP 42/38	DEP 40/38	DEP 46/40-7
DAP 42/40	DEP 42/36	
DAP 44/38	DEP 42/38	
DAP 44/40	DEP 46/40	
DAP 44/36		
DAP 46/36		
DAP 46/40		
DAP 46/42		
DAP 48/40		

These helixes are common on many models, but not for use on some Polaris ATV models that use the TEAM style secondary clutch. Be sure to consult your dealer service manual.



**Dalton ATV Primary Springs**

Dalton springs are made from the highest quality stock, stress relieved and shot peened for long lasting durability.

Part #	@2.5"	@2.0"	@1.25"
--------	-------	-------	--------

**Polaris and Kawasaki**

Dalton plain/white	DPPS-PW	10 lbs.	60 lbs.	114 lbs.
Dalton blue	DPPS-BL	3 lbs	60 lbs.	155 lbs.
Dalton orange/blue	DPPS-O/BL	25 lbs.	76 lbs.	167 lbs.
Dalton black/white	DPPS-B/W	45 lbs.	82 lbs.	143 lbs.
Dalton black/orange	DPPS-B/O	56 lbs.	91 lbs.	157 lbs.

**Can-Am/ BRP**

Dalton black/yellow	DPPS-B/Y	45 lbs.		120 lbs.
Dalton green/yellow	DPPS-G/Y	67 lbs.		160 lbs.
Dalton tan	DPPS-TN	55 lbs.		155 lbs.

Note the above primary springs are load-rated in "lbs" as some of them are used for both Polaris and Kawasaki models.

**ATV Secondary Springs**

**Part #**

Suzuki Vinson/Arctic Cat 500 Auto	DPSS-P/Y
Yamaha 660 Grizzly	DPSS-P/PK
Polaris (EBS only)	DPSS-B
Polaris (non EBS)	DPSS-B/R/S
Suzuki King Quad	DPSS-O
Bombardier Green	DPSS-GN

**Kawasaki Secondary Springs Part # @2.5" @1.25"**

Dalton Plain/Purple	DPSS-P/PL	51 kg.	103 kg.
Dalton Aqua	DPSS-AQ	61 kg.	112 kg.
Dalton Violet	DPSS-V	51 kg.	120 kg.

Stock secondary spring on Prairie/ KFX 700 models (yellow) 44 kg. 98 kg.

Stock secondary spring on the BF 750 4x4 ATV model only (purple) 36 kg. 111 kg.

Note that these secondary springs for Kawasaki models are load-rated in kilograms (kg).

Part #	Price (E)
DCC-101	\$219.95
DCC-RB	\$17.00
DPPS-P/W	\$33.95
DPPS-BL	\$33.95
DPPS-O/BL	\$33.95
DPPS-B/W	\$33.95
DPPS-B/O	\$33.95
DPPS-B/Y	\$33.95
DPPS-G/Y	\$33.95
DPPS-TN	\$33.95
DP90	\$170.00

Part #	Price (E)
DPK	\$230.00
DBO	\$215.00
DCP-A	\$61.95
DCP-G	\$50.95
DCP-J	\$50.95
DFRL-Y	\$10.95
DFR-Y	\$4.95
DFRH-Y	\$10.95
DFRA-Y	\$10.95
J200XV	\$72.00
DCT-ST	\$185.95

## Clutch Tuning Components, Tools and Accessories



### ATV Clutch Weights (Polaris)

**DP90** DaltonPro DP90 series flyweights were designed specifically to fit the P-90 ATV type drive clutch. No washer or shims needed to maintain belt side clearance. Billet steel, heat-treated, they come complete with bushings for longer pin life. Available in gram increments 48g+



### ATV Clutch Weights (Kawasaki)

**DPK** The DPK series of Dalton flyweights was designed to fit the Kawasaki ATV drive clutch. Better distribution of mass allows for excellent belt grip on

the bottom end, while maintaining top rpm. Now available in more base gram increments. These weights are adjustable by use of mass rivets (DFR-Y) The DPK series does not fit the '08 BF 750 model or the Teryx utility. These models use a new improved drive clutch on the engine.

Coming soon! Watch our website for developments on new flyweight options (DPKA series) for the 08 and newer style drive clutches.



### ATV Clutch Flyweights (Can-Am/ BRP)

**DBO** Built specifically for the Can-Am drive clutch. Each model application is considered independently during testing. We have various flyweight

models for the Can-Am ATV's. Various curvatures, location of mass, and total mass make the flyweights often case specific. It's often wrongly assumed that flyweights are compared only by grams of total mass.



### Clutch Pullers

DaltonPro Clutch Pullers are accurately machined from super tough 17-4 series stainless steel and heat-treated to our specifications.

#### Available Clutch Puller Applications

	Dalton Part #	OEM Part #
<b>Polaris</b> All ATV (85-06)	<b>DCP-A</b>	2870506
<b>Arctic Cat</b> ATV AC650 4X4 only	<b>DCP-G</b>	2871855
<b>Kawasaki</b> ATV models, All 360, 400, 650, 700 and 750 automatics 1999 & up. Not Teryx .	<b>DCP-G</b>	5700-1429
<b>2008 Teryx Utility Vehicle</b> (For Teryx only)	<b>DCP-J</b>	57001-1711

### Flyweight Replacement Bushings



**DRB-001** Replacement bushing for DP90 Polaris and Comet flyweights (set of 3)  
**DRB-003** Replacement bushing for DPK/Kawasaki ATV flyweights (set of 4)  
**DRB-003A** Replacement bushing for new style DPKA series and factory wide series weights in '08 and newer 750 EFI and Teryx type (set of 4 wide)  
**DRB-004** Replacement bushing for DBO flyweights (set of 4)  
**DRB-005** Replacement bushings for DBO series (set of 3)



### Flyweight Rivets

These rivets are used to adjust the mass on OEM Yamaha snowmobile flyweights. They can also be used for, and are included in some of our kits for, Kawasaki and Can-Am ATV's to adjust total mass of the flyweights for applications.

Dalton Part #		Yamaha Part #
<b>DFRL-Y</b>	3.7 g (long solid)	90261 06034-00
<b>DFR-Y</b>	3.1 g (solid)	90261 06019-00
<b>DFRH-Y</b>	2.4 g (hollow)	90266 06002-00
<b>DFRA-Y</b>	0.85 g (aluminum)	90266 06001-00



### Digital Gram Scale

#### J 200 XV

Many professional tuners of snowmobile and automatic ATV's use gram scales to achieve balanced total mass after adding or subtracting flyweight grams. This durable, portable scale is a favorite proven performer with the following features:

- 200 g capacity x 0.01 g increments
- Stainless steel tray with lid
- 4 key operation
- Compact 3"x 4.75" size
- Large red backlit display
- Comes with calibration weight



### Compression Spring Tester

**DCT ST** A Critical tool for serious clutch tuner. This compression spring tester can be mounted in any drill press, and used to compare engagement pre-load and full shift load at any specified height.



### Olav Aaen's Clutch Tuning Handbook

This book by Olav Aaen helps you get the maximum performance from your drive belt system with in-depth chapters on CVT clutch theory and testing. It covers tuning and servicing for both ATV and snowmobile CVT belt drive systems.

## Polaris

### ATV Clutches for Polaris

#### Primary Clutch

Model	Year	Part #	Price (D)
500 ATP HO	05	P1321706	\$559.69
500 Magnum 4x4 (EBS)	99-02		
500 Magnum 4x4 RMK (EBS)	02		
500 Sportsman 4x4 (EBS)	98-00		
500 Sportsman HO 4x4	01-05		
600 Sportsman 4x4	03-05	P1321971	\$539.95
700 Sportsman 4x4 (EBS)	02-05		
700 Sportsman EFI	04-05		
700 MV7	05		

#### Secondary Clutch Parts (Driven)

- Meets or Exceeds OEM. quality parts
- Parts to repair P-90 and new EBC braking clutches.

Description	Model	Part #	Price (E)
1" Bushing	P90	SCB11	\$26.13
Button (3-Needed)	P90	003-151-04	\$0.99
Snap Ring EBS	P90	P7710448	\$3.25
Deflection Shim	P90	P7556804	\$0.75
Offset Shim	P90	P7556509	\$0.80
EBS 1/2" Bushing	EBS	P3585710	\$18.95

#### Secondary Clutch

- Secondary clutch comes with a helix & spring.

Model	Year	Spring	Helix	Part #	Price (D)
250 Trail Blazer 2x4	01-04	Red	40	P1322180	\$407.25
250 Xplorer 4x4	01-02				
400 Trail Blazer 2x4	2003				
400 Scrambler 2x4/4x4	01-02				
500 Sportsman 6x6	01-04				
500 Magnum 4x4 (EBS)	99-02	White/Green	Compound	P1322190	\$399.95
500 Sportsman 4x4 (EBS)	98-00				
Diesel 4x4 (EBS)	99-01				
325 Magnum	2000	White/Yellow	Compound	P1322184	\$428.99
500 Sportsman 4x4 HO (EBS)	03-04				
All up to 2000 (non EBS)		Red	40	P1322180	\$407.25

#### Primary Clutch Parts (Drive)

- Meets or Exceeds OEM. quality parts
- Parts to repair P-90 and new EBC braking clutches.

Description	Model	Part #	Price (E)
Weight Pin	P90	P7512266	\$3.84
Weight Pin Nut	P90	P7541906	\$1.49
Weight Pin Bushings (sold each)		15-152-3	\$6.95
Spider Shim .020	P90	P5210752	\$1.50
Spider Shim .032	P90	P5210753	\$1.50
Spider Shim .050	P90	P5210754	\$1.99
Cover Bolt	P90	P7512265	\$1.99
Primary Clutch Cover Bushing	P85 & P90	PCB510	\$10.65
Primary Clutch Moveable Sheave Bushing	P90	PMB504	\$23.75
EBS Primary Clutch Movable Sheave Bushing*	EBS	PMB492	\$36.85
EBS Primary Clutch Movable Sheave Bushing**	EBS	PMB712	\$36.85
EBS 1/2" Bushing	EBS	SCB10	\$10.65

\* Fits: 500 Sportsman EFI 2006, 700 Sportsman / EFI 2006, 800 Sportsman EFI 2005-2006.

\*\* Fits: All other models.



Primary Clutch

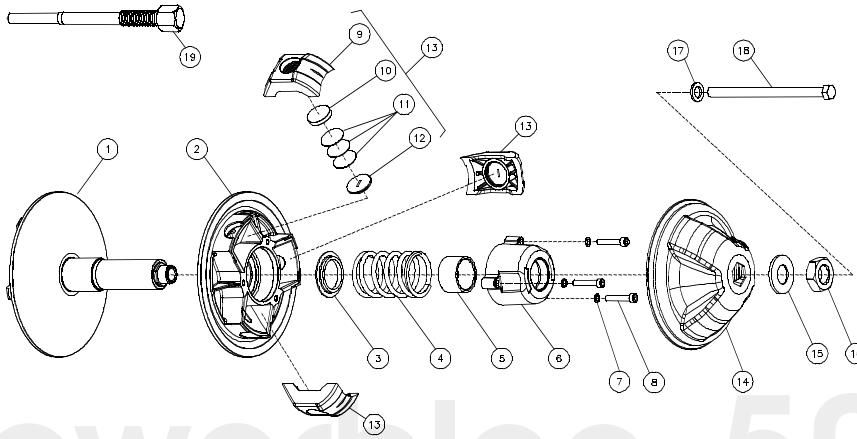


Secondary Clutch



#### COMET Primary Clutch

Description	Model	Part #	Price (D)
94C Clutch			
25 mm 1:10 tapered crank	FL350 Odyssey	C206094	\$307.50
Kawasaki Clutch			
30 mm 1:10 tapered crank		C219118	\$429.95
Polaris Clutch			
30 mm 1:10 tapered crank		C218875	\$429.95



	Qty
1 Fixed Flange	1
2 Sliding Flange	1
3 Spring Support	1
4 Spring	1
5 Stroke Limiter	1 or 0
6 Spring Cover	1
7 Lock Washer	3
8 Hexagon Socket Head Cap Screw	3
9 Bloc / Block	3
10 Weight (21 g)	According to calibration
11 Weight (3.4 g)	According to calibration
12 Threaded Cap	3
13 Assembly Block	3
14 Cap1	
15 Flat Washer	1 or 0
16 Nut1	
17 Lock Washer	1 or 0
18 Fixing Bolt	1 or 0
19 Puller	n/a

Powerbloc 50

Model	Year	CC	Tech Notes	Part #	Price (D)
<b>Kawasaki</b>					
Prairie 300 2x4/4x4	1999-02	300	Fig. B	02-0400-0222	\$511.95
Prairie 360 2x4/4x4	2003-04	360	Fig. C	02-0400-0218	\$520.95
Prairie 360 4x4 Adv. Classic	2003	360	Fig. C	02-0400-0218	\$520.95
Prairie 360 4x4 Hardwoods Green HD	2004	362	Fig. C	02-0400-0218	\$520.95
Prairie 400	1998	400	Fig. A&B	02-0400-0221	\$529.95
Prairie 400	1999-02	400	Fig. B	02-0400-0220	\$499.95
Prairie 400 4x4	1999-02	400	Fig. B	02-0400-0220	\$499.95
Prairie 400 4x4	1997-98	400	Fig. A&B	02-0400-0221	\$529.95
Prairie 650 4x4	2002-03	650	Fig. C	02-0400-0219	\$518.95
Prairie 650 4x4 Adv. Classic	2003	650	Fig. C	02-0400-0219	\$518.95
<b>Polaris</b>					
250 2x4/4x4	1993	250	Fig. D	02-0400-0217	\$494.95
300 2x4/4x4/6x6	1994	300	Fig. D	02-0400-0225	\$506.95
350L 2x4/4x4/6x6	1993	350	Fig. D	02-0400-0226	\$506.95
400L 2x4/4x4/6x6	1994	400	Fig. D	02-0400-0213	\$500.95
ATP 330 4x4	2004	329	Fig. D	02-0400-0228	\$493.95
ATP 500 HO 4x4	2004	499	Fig. D	02-0400-0213	\$500.95
Big Boss 250 4X6	1989-92	250	Fig. D	02-0400-0217	\$494.95
Big Boss 250 6x6	1991-92	250	Fig. D	02-0400-0217	\$494.95
Big Boss 400L 6x6	1995-97	400	Fig. D	02-0400-0210	\$494.95
Big Boss 500 6X6	1998	500	Fig. D	02-0400-0211	\$494.95
Big Boss 500 6X6	1999	500	Fig. D	02-0400-0213	\$500.95
Magnum 325 2x4/4x4	2000-02	325	Fig. D	02-0400-0228	\$493.95
Magnum 325 2x4 EBS	2000	325	Fig. D	02-0400-0228	\$493.95
Magnum 325 4x4 EBS	2000-02	325	Fig. D	02-0400-0228	\$493.95
Magnum 330 2x4/4x4	2003-04	330	Fig. D	02-0400-0228	\$493.95
Magnum 330 4x4 EBS	2003	330	Fig. D	02-0400-0228	\$493.95
Magnum 425 2x4	1995-98	425	Fig. D	02-0400-0214	\$499.13
Magnum 425 4x4	1995-98	425	Fig. D	02-0400-0214	\$499.13
Magnum 425 6x6	1996-97	425	Fig. D	02-0400-0214	\$499.13
Magnum 500	1999	500	Fig. D	02-0400-0211	\$494.95
Magnum 500 2x4 EBS	2002	500	Fig. D	02-0400-0211	\$494.95
Magnum 500 4x4	2000	500	Fig. D	02-0400-0211	\$494.95
Magnum 500 4x4 EBS	2000-02	500	Fig. D	02-0400-0211	\$494.95
Scrambler 400 2x4	2000	400	Fig. D	02-0400-0214	\$499.13
Scrambler 400 2x4	2001-02	400	Fig. D	02-0400-0216	\$501.95
Scrambler 400 4x4	1995	400	Fig. D	02-0400-0213	\$500.95
Scrambler 400 4x4	1996	400	Fig. D	02-0400-0216	\$501.95
Scrambler 400 4x4	1998-99	400	Fig. D	02-0400-0216	\$501.95
Scrambler 400 4x4	2000	400	Fig. D	02-0400-0216	\$501.95
Scrambler 400 4x4	2002	400	Fig. D	02-0400-0216	\$501.95
Scrambler 400L 4x4	1997	400	Fig. D	02-0400-0216	\$501.95
Scrambler 500	1997	500	Fig. D	02-0400-0211	\$494.95

Model	Year	CC	Tech Notes	Part #	Price (D)
Scrambler 500	1999	500	Fig. D	02-0400-0213	\$500.95
Scrambler 500 2x4	2001-02	500	Fig. D	02-0400-0213	\$500.95
Scrambler 500 4x4	1998	500	Fig. D	02-0400-0213	\$500.95
Scrambler 500 4x4	2000	500	Fig. D	02-0400-0213	\$500.95
Scrambler 500 4x4	2001	500	Fig. D	02-0400-0213	\$500.95
Scrambler 500 4x4	2002	500	Fig. D	02-0400-0213	\$500.95
Scrambler 500 4x4	2003	500	Fig. D	02-0400-0213	\$500.95
Sport 400L 2x4	1994-99	400	Fig. D	02-0400-0216	\$501.95
Sportsman 335	1999-00	335	Fig. D	02-0400-0227	\$493.95
Sportsman 400 4x4	1993	400	Fig. D	02-0400-0216	\$501.95
Sportsman 400 4x4	1994	400	Fig. D	02-0400-0214	\$499.13
Sportsman 400 4x4	1995-96	400	Fig. D	02-0400-0210	\$494.95
Sportsman 400 4x4	2001-04	400	Fig. D	02-0400-0212	\$498.95
Sportsman 400L 4x4	1997	400	Fig. D	02-0400-0214	\$499.13
Sportsman 500	1996-98	500	Fig. D	02-0400-0211	\$494.95
Sportsman 500 6x6	2000-01	500	Fig. D	02-0400-0213	\$500.95
Sportsman 500 Duse	2001	500	Fig. D	02-0400-0213	\$500.95
Sportsman 500 EBS	1998-00	500	Fig. D	02-0400-0211	\$494.95
Sportsman 500 EBS	2001	500	Fig. D	02-0400-0213	\$500.95
Sportsman 500 HO	2001	500	Fig. D	02-0400-0213	\$500.95
Sportsman 500 HO EBS	2002	500	Fig. D	02-0400-0211	\$494.95
Sportsman 500 HO EBS	2003	500	Fig. D	02-0400-0213	\$500.95
Sportsman 500 HO EBS	2004	499	Fig. D	02-0400-0213	\$500.95
Sportsman 600 Twin	2003-04	600	Fig. D&E	02-0400-0229	\$507.95
Sportsman 6x6	2002	500	Fig. D	02-0400-0213	\$500.95
Sportsman 700 Twin	2002-04	700	Fig. D&E	02-0400-0230	\$502.95
Trail Blazer 250	1990-95	250	Fig. D	02-0400-0217	\$494.95
Trail Blazer 250	1998-03	250	Fig. D	02-0400-0224	\$506.95
Trail Blazer 250 2x4	1993	250	Fig. D	02-0400-0217	\$494.95
Trail Blazer 250 2x4	1997-98	250	Fig. D	02-0400-0217	\$494.95
Trail Blazer 400	2003	400	Fig. D	02-0400-0216	\$501.95
Trail Boss 250 2x4	1988-92	250	Fig. D	02-0400-0217	\$494.95
Trail Boss 250 2x4	1995-96	250	Fig. D	02-0400-0217	\$494.95
Trail Boss 250 2x4	1999	250	Fig. D	02-0400-0217	\$494.95
Trail Boss 250 4x4	1991-92	250	Fig. D	02-0400-0217	\$494.95
Trail Boss 250 ES	1996	250	Fig. D	02-0400-0217	\$494.95
Trail Boss 250 ES	1997	250	Fig. D	02-0400-0224	\$506.95
Trail Boss 300 2x4/4x4	1995	300	Fig. D	02-0400-0225	\$506.95
Trail Boss 325 2x4	2000-02	325	Fig. D	02-0400-0227	\$493.95
Trail Boss 330 2x4	2003	330	Fig. D	02-0400-0227	\$493.95
Trail Boss 350L 2x4/4x4	1990-92	350	Fig. D	02-0400-0226	\$506.95
Xplorer 250 4x4	2000-02	250	Fig. D	02-0400-0223	\$506.95
Xplorer 300	1996-99	300	Fig. D	02-0400-0225	\$506.95
Xplorer 400 4x4	1995-02	400	Fig. D	02-0400-0214	\$499.13
Xplorer 500	1997	500	Fig. D	02-0400-0211	\$494.95
Xpress 300	1996-99	300	Fig. D	02-0400-0225	\$506.95
Xpress 400	1996-97	400	Fig. D	02-0400-0210	\$494.95

## Drive Belts — ATV

Each belt is crafted from only the best rubber compounds and tough Aramax cord. Carlisle belts enhance the efficiency of the variable speed drive system. UltimaxATV eliminates excessive friction and tension preventing drive damage. Exacting belt length tolerance minimizes system wear and avoids slippage.



**Please Note:** The belt dimensions provided by Carlisle are for reference only. These dimensions should not be used to determine product functionality.

Carlisle belts are built to exacting specifications and inspected with calibrated equipment at specified tensions to assure strict dimensional compliance. Belt dimensions can vary from one manufacturer to another based on proprietary design information.



## Ultimax ATV Belt Dimensions

Part #	Price	O.C.	Top Width	Part #	Price	O.C.	Top Width
UA400	\$79.99	33 <sup>3</sup> / <sub>2</sub> "	1 <sup>3</sup> / <sub>16</sub> "	UA421	\$55.99	29 <sup>7</sup> / <sub>8</sub> "	2 <sup>3</sup> / <sub>32</sub> "
UA401	\$81.99	36 <sup>27</sup> / <sub>32</sub> "	1 <sup>7</sup> / <sub>16</sub> "	UA422	\$83.99	37"	1 <sup>19</sup> / <sub>64</sub> "
UA402	\$55.99	35 <sup>3</sup> / <sub>16</sub> "	1 <sup>1</sup> / <sub>16</sub> "	UA423	\$83.99	37 <sup>11</sup> / <sub>64</sub> "	1 <sup>17</sup> / <sub>64</sub> "
UA403	\$50.99	26 <sup>21</sup> / <sub>32</sub> "	1 <sup>1</sup> / <sub>16</sub> "	UA424	\$90.99	41 <sup>7</sup> / <sub>32</sub> "	1 <sup>3</sup> / <sub>16</sub> "
UA404	\$90.99	43 <sup>29</sup> / <sub>32</sub> "	1 <sup>3</sup> / <sub>16</sub> "	UA425	\$83.99	36 <sup>6</sup> / <sub>64</sub> "	2 <sup>5</sup> / <sub>32</sub> "
UA405	\$88.99	41 <sup>27</sup> / <sub>64</sub> "	3 <sup>1</sup> / <sub>32</sub> "	UA426	\$72.99	40 <sup>57</sup> / <sub>64</sub> "	1 <sup>10</sup> / <sub>64</sub> "
UA406	\$90.99	36 <sup>3</sup> / <sub>4</sub> "	1 <sup>29</sup> / <sub>64</sub> "	UA427	\$57.99	43 <sup>37</sup> / <sub>64</sub> "	1 <sup>3</sup> / <sub>8</sub> "
UA407	\$88.99	33 <sup>15</sup> / <sub>32</sub> "	1 <sup>1</sup> / <sub>8</sub> "	UA428	\$55.99	42 <sup>15</sup> / <sub>64</sub> "	1 <sup>3</sup> / <sub>16</sub> "
UA409	\$85.99	39 <sup>9</sup> / <sub>32</sub> "	1 <sup>1</sup> / <sub>4</sub> "	UA429	\$72.99	43 <sup>47</sup> / <sub>64</sub> "	1 <sup>15</sup> / <sub>64</sub> "
UA410	\$87.99	40 <sup>33</sup> / <sub>64</sub> "	1 <sup>9</sup> / <sub>32</sub> "	UA433	\$80.99	52 <sup>1</sup> / <sub>8</sub> "	1 <sup>29</sup> / <sub>64</sub> "
UA411	\$89.99	42 <sup>5</sup> / <sub>32</sub> "	1 <sup>3</sup> / <sub>64</sub> "	UA434	\$50.99	43 <sup>15</sup> / <sub>64</sub> "	1 <sup>13</sup> / <sub>64</sub> "
UA412	\$57.99	41"	1 <sup>5</sup> / <sub>32</sub> "	UA435	\$80.99	37 <sup>7</sup> / <sub>64</sub> "	1 <sup>1</sup> / <sub>4</sub> "
UA413	\$57.99	41"	1 <sup>5</sup> / <sub>32</sub> "	UA436	\$50.99	35 <sup>3</sup> / <sub>16</sub> "	4 <sup>3</sup> / <sub>64</sub> "
UA414	\$50.99	26 <sup>13</sup> / <sub>16</sub> "	4 <sup>5</sup> / <sub>64</sub> "	UA437	\$81.99	37 <sup>5</sup> / <sub>16</sub> "	1 <sup>7</sup> / <sub>16</sub> "
UA415	\$50.99	28 <sup>3</sup> / <sub>8</sub> "	1 <sup>1</sup> / <sub>16</sub> "	UA439	\$82.99		
UA416	\$83.99	33 <sup>11</sup> / <sub>16</sub> "	1 <sup>11</sup> / <sub>64</sub> "	UA440	\$59.99		
UA417	\$80.99	34 <sup>1</sup> / <sub>2</sub> "	1 <sup>13</sup> / <sub>64</sub> "	UA442	\$74.95		
UA418	\$80.99	33 <sup>17</sup> / <sub>64</sub> "	1 <sup>1</sup> / <sub>8</sub> "	UA444	\$64.95		
UA419	\$90.99	38 <sup>11</sup> / <sub>64</sub> "	1 <sup>5</sup> / <sub>16</sub> "	UA445	\$99.95		
UA420	\$90.99	37 <sup>11</sup> / <sub>32</sub> "	1 <sup>19</sup> / <sub>64</sub> "	UA446	\$119.95		

Model	Year	cc	OEM #	Replaces	Carlisle	
					Part #	Price (G)
<b>Arctic Cat</b>						
50 Automatic	2004-2005	50	3301-113		UA402	\$55.99
50/50 DVX	2009	50	3303-537		UA403	\$50.99
50 Y-6 Youth	2006	50			UA403	\$50.99
90 Y-12 Youth	2006				UA415	\$50.99
90 Automatic	2002-2003	90	3301-113		UA402	\$55.99
90/90 SE/90 DVX, DVX SE	2007-2009	90	3309-095		UA415	\$50.99
375 Automatic 2x4, 4x4	2002	376	3402-664		UA400	\$79.99
400 Automatic MRP 4x4	2002	376	3402-757		UA401	\$81.99
400 Automatic 2x4	2003-2004	376	3402-664		UA400	\$79.99
400 Automatic 4x4	2003-2008	376	3402-664		UA400	\$79.99
400 TRV	2009		3402-664		UA400	\$79.99
500 Automatic 4x4	2000-2001		3402-484		UA401	\$81.99
500 Automatic 4x4	2002-2009	493	3402-757		UA401	\$81.99
550 H1 EFI, H1 EFI MAX-4 CAMO	2009		0823-013		UA406	\$90.99
550 Prowler Flatbed	2009		0823-013		UA406	\$90.99
550 TRV H1 EFI	2009		0823-013		UA406	\$90.99
650 Automatic 4x4/4x4 LE	2004	633	3201-113		UA418	\$80.99
650 H1 Automatic 4x4	2005	641	3201-113		UA418	\$80.99
650 H1 Automatic 4x4 SE	2006		0823-013		UA406	\$90.99
650 H1 Auto 4x4/TBX/LE	2007		0823-013		UA406	\$90.99
650 Prowler XT	2006-2009		0823-013		UA406	\$90.99
650 Twin Automatic	2004-2006	650	3201-242		UA418	\$80.99
650 V2 Automatic 4x4/4x4 LE	2005	633	3201-113		UA418	\$80.99
700 H1 EFI/EFI SE/EFI Max-4 Camo/EFI MudPro	2009		0823-013		UA406	\$90.99
700 EFI Automatic 4x4/4x4 LE	2007-2008		3403-141		UA401	\$81.99
700 Prowler XTX	2008-2009		0823-013		UA406	\$90.99
700 TRV H1 EFI Cruiser	2008-2009		0823-013		UA406	\$90.99
<b>Argo</b>						
Avenger EFI	2007-2008		127-137		UA428	\$55.99
Avenger 8x8	2005-2008		127-137		UA428	\$55.99
Bigfoot 6x6	2004-2006		125-56		UA433	\$80.99
Conquest 6x6/8x8	2004-2006		125-56		UA433	\$80.99
Frontier	2007		127-159		N/A	
Response 8x8	2004-2007		125-56		UA433	\$80.99
Vanguard 6x6	2004-2007		125-56		UA433	\$80.99
Vanguard2 6x6	2004-2007		125-56		UA433	\$80.99
<b>Bombardier/Can-Am</b>						
DS50	2003-2006		A23100-117-000		UA436	\$50.99
DS90 2 STROKE	2004-2006		A23100-117-000		UA436	\$50.99
Outlander 330 HO 2X4/4X4	2004-2005		715-900-024		UA435	\$80.99
Outlander 400	2003		715-900-024		UA435	\$80.99



**Drive Belts — ATV**

Each belt is crafted from only the best rubber compounds and tough Aramax cord. Carlisle belts enhance the efficiency of the variable speed drive system. UltimaxATV eliminates excessive friction and tension preventing drive damage. Exact belt length tolerance minimizes system wear and avoids slippage.



Model	Year	cc	OEM #	Replaces	Carlisle	
					Part #	Price (G)
Outlander 400 HO	2004-2009		715-900-024		UA435	\$80.99
Outlander 400 EFI	2008-2009		715-900-024		UA435	\$80.99
Outlander Max 400 EFI	2008-2009		715-900-024		UA435	\$80.99
Outlander 500	2007-2008		420-280-360		UA419	\$90.99
Outlander 500 EFI	2009		715-000-302		UA446	\$119.95
Outlander Max 500 EFI XT	2009		715-000-302		UA446	\$119.95
Outlander 650	2006-2009		420-280-360		UA419	\$90.99
Outlander 650 EFI	2009				UA446	\$119.95
Outlander Max 650 EFI XT	2009				UA446	\$119.95
Outlander 800 HO EFI 4x4	2006-2008		420-280-360		UA419	\$90.99
Quest 500 2X4/4X4	2003		715-900-023		UA420	\$90.99
Quest 650	2003		715-900-023		UA420	\$90.99
Rally 200	2003		715-900-023		UA420	\$90.99
Rally 200	2004-2006		420-280-220		N/A	
Renegade 500	2008		715-900-030		UA419	\$90.99
Renegade 800 HO EFI	2007-08		715-900-030		UA419	\$90.99
Sarasota 1000	2004-2005		VG10274		UA434	\$50.99
Traxter	2003				N/A	
Traxter 500 AUTO CVT	2004		715-900-023		UA420	\$90.99
Traxter 500 AUTO CVT	2005		715-900-024		UA435	\$80.99
Traxter 650 AUTO CVT	2004-2005		715-900-023		UA420	\$90.99
Traxter Max 650 AUTO CVT	2004-2005		715-900-023		UA420	\$90.99
Traxter XL/XT	2003				N/A	
<b>Honda</b>						
FL250 Odyssey	1977-1984	250	70408		UA405	\$88.99
FL350 Odyssey	1985-1987	350	22101-VMO-0031		UA404	\$90.99
<b>Kawasaki</b>						
KAF620 MULE	1989-1996		59011-1057		UA429	\$72.99
Mule 1000	All		59011-1053			
Mule 2010/2020/2030	All		59011-1053			
Mule 2500 Series	All		59011-1057			
Mule 3000/3010 Series	All		59011-1077			
Mule 520/550 Series	All		59011-1071			
Prairie	1998	400	59011-1069		UA411	\$89.99
Prairie 300	1999-2002	290	59011-1065		UA409	\$85.99
Prairie 300 4x4	1999-2002	290	59011-1065		UA409	\$85.99
Prairie 360	2006-2009		59011-0003		UA418	\$80.99
Prairie 400	1999-2002	391	59011-1066		UA410	\$87.99
Prairie 400 4x4	1999-2002	391	59011-1066		UA410	\$87.99
Prairie 400 4x4	1997-1998	391	59011-1069		UA411	\$89.99
Prairie 650 4x4	2002-2003	633	59011-1080		UA418	\$80.99
Prairie 700	2004-2006	697	59011-0003		UA418	\$80.99
KFX 80	2003-2006		59011-S003		UA421	\$55.99
KFX 700 V Force	2004-2009	697	59011-0003		UA418	\$80.99
Brute Force 650 4x4	2005-2009		59011-0003		UA418	\$80.99
Brute Force 750 4x4	2005-2009		59011-0003		UA418	\$80.99
Teryx 750	2008-2009		59011-0003		UA418	\$80.99
<b>Polaris</b>						
ATVs (All Models)	1990-1997		3211048	MAX1121	UA412	\$57.99
ATVs (All Models)	1998		3211077	MAX1121	UA412	\$57.99
ATVs (Non-EBS)	1999-2001		3211077	MAX1121	UA412	\$57.99
All Diesel Models	2000-2001		3211069		UA413	\$57.99
ATP 330 2x4/4x4	2004-2005	329	3211077	MAX1121	UA412	\$57.99
ATP 500 HO	2004-2005	499	3211069		UA413	\$57.99
Hawkeye 2X4	2006-2008		3211108		UA427	\$57.99
Hawkeye 4X4	2006-2007		3211108		UA427	\$57.99
Hawkeye 300	2009		3211131		UA440	\$59.99
International Big Boss 6x6	2000-2002		3211069		UA413	\$57.99
Magnum 325	2000-2001	325	3211077	MAX1121	UA412	\$57.99
Magnum 330 2x4/4x4	2003-2005	329	3211077	MAX1121	UA412	\$57.99



## Drive Belts — ATV

Each belt is crafted from only the best rubber compounds and tough Aramax cord. Carlisle belts enhance the efficiency of the variable speed drive system. UltimaxATV eliminates excessive friction and tension preventing drive damage. Exacting belt length tolerance minimizes system wear and avoids slippage.



Model	Year	cc	OEM #	Replaces	Carlisle	
					Part #	Price (G)
Magnum 330 4X4	2006		3211077		UA412	\$57.99
Magnum 500	2000-2002	499	3211077		UA413	\$57.99
Magnum 500 w/EB	2000-2001	499	3211069		UA413	\$57.99
Outlaw 90	2007		0453455		N/A	
Phoenix 200	2005-2007		0452496		N/A	
PTV 4x4/6x6	2004		3211077		UA412	\$57.99
Ranger 2x4/4x4/6x6	2003-2005		3211077		UA412	\$57.99
Ranger 500 2x4/4x4	2006		3211077		UA412	\$57.99
Ranger 500 4x4	2009		3211077		UA412	\$57.99
Ranger 500 EFI 4x4	2006-2008		3211077		UA412	\$57.99
Ranger 700 EFI/LE 4x4	2007		3211106		UA424	\$90.99
Ranger 700 4x4 EFI	2008		3211118		UA424	\$90.99
Ranger 700 EFI 6x6	2006-2009		3211106/118		UA424	\$90.99
Ranger Crew 700	2008-2009		3211118		UA424	\$90.99
Ranger HD 700	2009		3211118		UA424	\$90.99
Ranger RZR 800, EFI	2008-2009		3211113		UA426	\$72.99
Ranger XP 700	2009		3211118		UA424	\$90.99
Ranger XP 700 4x4	2005-2006		3211106		UA424	\$90.99
Sawtooth	2006-2007		0452496		N/A	
Scrambler 2x4 INTL	2008		3211077		UA412	\$57.99
Scrambler 400 (2x4)	2000-2001	378	3211077	MAX1121	UA412	\$57.99
Scrambler 400 (2x4)	2002	378	3211077	MAX1121	UA413	\$57.99
Scrambler 400 (4x4)	2000	399	3211077	MAX1121	UA412	\$57.99
Scrambler 500 (4x4)	2000-2009	499	3211077	MAX1121	UA412	\$57.99
Sportsman 300 4x4	2008-2009		3211131		UA440	\$59.99
Sportsman 335	2000	335	3211077	MAX1121	UA412	\$57.99
Sportsman 400	2002-2005	425	3211077	MAX1121	UA412	\$57.99
Sportsman 400 HO 4x4	2008		3211129		UA427	\$57.99
Sportsman 400 HO	2009		3211131		UA440	\$59.99
Sportsman 450	2006-2007		3211077		UA412	\$57.99
Sportsman 500	2000	499	3211069		UA413	\$57.99
Sportsman 500 EFI	2006		3211095		UA413	\$57.99
Sportsman 500 EFI	2007-2009		3211113		UA426	\$72.99
Sportsman 500 EFI X2	2009		3211113		UA426	\$72.99
Sportsman 500 EFI Touring	2009		3211113		UA426	\$72.99
Sportsman 500 HO	2003-2004	499	3211069		UA413	\$57.99
Sportsman 500 HO	2005-2006		3211095		UA413	\$57.99
Sportsman 500 HO	2008-2009		3211077		UA412	\$57.99
Sportsman 500 HO EFI	2008		3211113		UA426	\$72.99
Sportsman 500 HO DUSE w/EB	2001	499	3211069		UA413	\$57.99
Sportsman 500 HO RSE	2001	499	3211069		UA412	\$57.99
Sportsman 500 HO w/EB	2001	499	3211069		UA413	\$57.99
Sportsman 500 HO/ HO DUSE	2001	499	3211077	MAX1121	UA412	\$57.99
Sportsman 500 RSE	2000	499	3211077	MAX1121	UA412	\$57.99
Sportsman 600 Twin	2003-2005	597	3211091		UA413	\$57.99
Sportsman 6x6	2000-2005	499	3211077	MAX1121	UA412	\$57.99
Sportsman 6x6	2006-2008		3211077		UA412	\$57.99
Sportsman 700 EFI	2006		3211091		UA413	\$57.99
Sportsman 700 EFI	2007		3211116		UA426	\$72.99
Sportsman 700 Twin	2002-2006	683	3211091		UA413	\$57.99
Sportsman 800 EFI	2006		3211106		UA424	\$90.99
Sportsman 800 EFI	2007-2009		3211113		UA426	\$72.99
Sportsman 800 EFI 6x6	2008		3211113		UA426	\$72.99
Sportsman 800 HO EFI	2008		3211113		UA426	\$72.99
Sportsman 800 HO EFI X2	2008-2009		3211113		UA426	\$72.99
Sportsman 800 HO EFI Touring	2008-2009		3211113		UA426	\$72.99
Sportsman 800 Twin EFI	2005-2006		3211106		UA424	\$90.99
Sportsman MV7	2005-2006		3211091		UA413	\$57.99
Sportsman Touring 500 EFI,Quad	2008		3211113		UA426	\$72.99
Sportsman Touring 800 EFI	2008		3211113		UA426	\$72.99
Sportsman X2	2006		3211091		UA413	\$57.99



### Drive Belts — ATV

Each belt is crafted from only the best rubber compounds and tough Aramax cord. Carlisle belts enhance the efficiency of the variable speed drive system. UltimaxATV eliminates excessive friction and tension preventing drive damage. Exact belt length tolerance minimizes system wear and avoids slippage.



Model	Year	cc	OEM #	Replaces	Carlisle	
					Part #	Price (G)
Sportsman X2 500 EFI, Quad	2007-2008		3211113		UA426	\$72.99
Sportsman X2 700 EFI	2008		3211113		UA426	\$72.99
Sportsman X2 800 EFI	2007		3211113		UA426	\$72.99
Sportsman X2 800 EFI LE	2008		3211113		UA426	\$72.99
Trail Blazer 250	2000-2006	249	3211077	MAX1121	UA412	\$57.99
Trail Blazer 330	2008-2009		3211077		UA412	\$57.99
Trail Blazer 400	2003	378	3211077	MAX1121	UA412	\$57.99
Trail Boss 325	2000-2001	329	3211077	MAX1121	UA412	\$57.99
Trail Boss 330	2003-2009	329	3211077	MAX1121	UA412	\$57.99
UTV 1500 2x4	2004-2005	425	3211093		UA412	\$57.99
UTV 2x4	2004	425	3211077		UA412	\$57.99
UTV 4x4/6x6	2004-2005	499	3211077		UA412	\$57.99
Xpedition 325	2001		3211069		UA413	\$57.99
Xplorer (4x4)	2001	244	3211077	MAX1121	UA412	\$57.99
Xplorer 400	2000-2001	378	3211077	MAX1121	UA412	\$57.99
<b>Suzuki</b>						
Eiger 400 4X4	2005-2008		27601-38F00		UA400	\$79.99
Eiger 400 4x2	2007		27601-38F00		UA400	\$79.99
Eiger ATV	2002-2005	400	27601-38F00		UA400	\$79.99
Eiger Celebration Edition	2007		27601-38F00		UA400	\$79.99
King Quad 400AS/400FS	2008-2009		27601-38F00		UA400	\$79.99
King Quad 700	2005	695	27601-31G00			
King Quad 700 4X4	2005-2007		27601-31G00		UA437	\$81.99
King Quad 750AXi	2008-2009		27601-31G00		UA437	\$81.99
LTA500F AUTO Quad Master	2001		27600-09F60		UA401	\$81.99
LTA500F Vinson AUTO 2WD/4WD	2002-2004	493	27600-09F60		UA401	\$81.99
Q.U.V.	2005		K5901-11077		UA429	\$72.99
QuadSport 80 LT80	1987-2006	80	27601-40B01		UA421	\$55.99
QuadSport Z50	2006-2007		27601-22G00		N/A	
QuadSport Z90	2007		27601-33G00		N/A	
Twin Peak 700	2004-2006	697	K5901-10003		UA418	\$80.99
Vinson 500 4X4 AUTO	2005-2007		27601-09F60		UA401	\$81.99
Vinson 500 4x4 AUTO	2003/2005	493	27601-09F60		UA401	\$81.99
<b>Yamaha</b>						
Breeze	1989-2004		3FA-17641-00-00		UA425	\$83.99
Bruin 350 AUTO/AUTO 4x4	2004-2005	348	5GH-17641-00-00		UA417	\$80.99
Bruin 350 AUTO 2WD/HDW	2004		5GH-17641-00-00		UA417	\$80.99
Bruin 350 2x4/AUTO 4X4	2006		5UH-17641-00-00		UA416	\$83.99
Kodiak 450 4WD	2001-2003	420	5GH-17641-00-00		UA417	\$80.99
Kodiak 450 AUTO 4x4	2004-2006	420	5GH-17641-00-00		UA417	\$80.99
Kodiak 400 AUTO 4x4	2004-2006	400	5GH-17641-00-00		UA417	\$80.99
Kodiak 400	2001/2003	401	5GH-17641-00-00		UA417	\$80.99
Kodiak 400 4WD	2001-2003	401	5GH-17641-00-00		UA417	\$80.99
Kodiak 2WD/4WD	2000-2001		5GH-17641-00-00		UA417	\$80.99
Kodiak 4x4 Realtree X/TRA	2001	400	5GH-17641-00-00			
Grizzly 120 Auto	2009		3FA-17641-00-00		UA425	\$83.99
Grizzly 125	2004/07-08		3FA-17641-00-00		UA425	\$83.99
Grizzly 350 2x4/4x4	2007-2009		5UH-17641-00-00		UA416	\$83.99
Grizzly 350 Auto 4x4 IRS	2009		5UH-17641-00-00		UA416	\$83.99
Grizzly 400 4x4	2007		5GH-17641-00-00		UA417	\$80.99
Grizzly 450 4x4	2007-2008		5GH-17641-00-00		UA417	\$80.99
Grizzly 450 Auto 4x4 IRS	2009		5GH-17641-00-00		UA417	\$80.99
Grizzly 600 4x4 Auto	1998-2001	600	4WV-17641-00-00		UA423	\$83.99
Grizzly 660 4x4 Auto	2001-2008	660	5KM-17641-00-00		UA422	\$83.99
Grizzly 700 4x4	2007-2008		3B4-17641-00-00		UA422	\$83.99
Grizzly 700 FI Auto 4x4, EPS	2009		3B4-17641-00-00		UA422	\$83.99
Rhino 450	2007-2008		5GH-17641-00-00		UA417	\$80.99
Rhino 660	2006		5KM-17641-00-00		UA422	\$83.99
Wolverine 350	2007-2008		5UH-17641-00-00		UA416	\$83.99
Wolverine 450 4x4	2007-2009		3C2-17641-00-00		UA417	\$80.99



## Severe Duty ATV/UTV Drive Belts

*The highest quality ATV / UTV belt available.*

- Aramid tensil cord (non-cotton) will provide higher load capabilities and less slip.
- Deep Double cog style belt helps reduce clutch heat.
- Highest quality control & closer tolerances used in manufacturing.
- Designed for Severe Duty applications such as high horsepower, heavy load & aggressive riding styles
- Exacting specifications, measurements, and dimensions provide a consistent clutch operation.



Remember: If you are continually destroying belts, your clutches may be getting too hot. Improving your clutching with a clutch kit will decrease belt slippage and belt heat.

## Super Duty ATV/UTV Drive Belts

- Aramid cord construction for strength.
- Double cog style belt helps reduce clutch heat.
- Close tolerance due to dedicated drum construction gives clutching efficiency.
- Hand measured for consistent sizing
- Neoprene compounding.
- Designed for higher horsepower and big bore ATV's / UTV's.

## Standard ATV/UTV Drive Belts

- Aramid reinforced cord (numerous OE belts are cotton based for economy manufacturing).
- Designed for 450cc ATVs and smaller.
- OE replacement belt.



Model	Year	Replaces OE	Severe Duty		Super Duty		Standard	
			Part #	Price (F)	Part #	Price (F)	Part #	Price (F)
<b>Arctic Cat</b>								
375 2x4 / 4x4	02	3402-664	-	-	-	-	WE262000	\$71.37
400 2x4 / 4x4 Auto	03-07	3402-664	-	-	-	-	WE262000	\$71.37
400 4x4 Auto MRP	02	3402-757	-	-	-	-	WE262032	\$71.37
400 DVX	07	3402-664	-	-	-	-	WE262000	\$71.37
400 4x4 TRV PLUS	07	3402-664	-	-	-	-	WE262000	\$71.37
500 4x4 Auto	02-07	3402-757	-	-	-	-	WE262032	\$71.37
550 H1 EFI 4x4	09	0823-013	WE264010	\$142.80	WE262238	\$101.13	-	-
650 H1 4x4 Auto	05-08	0823-013	WE264010	\$142.80	WE262238	\$101.13	-	-
650 H1 4x4 Prowler	06-09	0823-013	WE264010	\$142.80	WE262238	\$101.13	-	-
650 H1 4x4 TBX	07	0823-013	WE264010	\$142.80	WE262238	\$101.13	-	-
650 H1 4x4 TRV	07	0823-013	WE264010	\$142.80	WE262238	\$101.13	-	-
650 V2 4x4 Auto	04-06	3201-242	WE265010	\$142.80	WE262217	\$101.13	-	-
700 EFI 4x4 Auto	06-07	3403-141	-	-	WE262234	\$101.13	-	-
700 H1 EFI 4x4	08-09	3201-242	WE265010	\$142.80	WE262217	\$101.13	-	-
700 H1 Prowler 4x4	08	3201-242	WE265010	\$142.80	WE262217	\$101.13	-	-
<b>Can-Am / Bombardier</b>								
330 Outlander HO	04-05	420-280-280	-	-	-	-	WE262035	\$71.37
400 Outlander	03-08	420-280-280	-	-	-	-	WE262035	\$71.37
500 Outlander	07-08	420-280-360	WE261025	\$142.80	WE262236	\$101.13	-	-
500 Quest	03-04	420-280-280	-	-	-	-	WE262035	\$71.37
500 Renegade 4x4	08	715-900-030	WE261025	\$142.80	WE262236	\$101.13	-	-
650 Outlander	07-09	420-280-360	WE261025	\$142.80	WE262236	\$101.13	-	-
650 Quest	03	420-280-280	-	-	-	-	WE262035	\$71.37
800 Outlander	07-08	715-900-030	WE261025	\$142.80	WE262236	\$101.13	-	-
800 Outlander HO EFI 4x4	06	420-280-360	-	-	WE262236	\$101.13	-	-
800 Renegade	08	420-280-360	WE261025	\$142.80	WE262236	\$101.13	-	-
<b>Club Car</b>								
Golf Cart 87-03	87-03	1016203	-	-	-	-	WE262007	\$53.51
<b>EZ Go</b>								
Golf Cart	95-03	72054-G01	-	-	-	-	WE262014	\$53.51
<b>John Deere</b>								
500 Buck Auto	(All)	C420280280	-	-	-	-	WE262035	\$71.37
Gator CS /CX	(All)	VG10274	-	-	-	-	WE262029	\$71.37
Gator 2x4	(All)	RE28721	-	-	-	-	WE262028	\$71.37
Gator HPX 2x4 / 4x4	(All)	VG10928	-	-	-	-	WE262031	\$71.37
Trail Gator 4x4 / 4x6	(All)	M125383	-	-	-	-	WE262030	CALL
Worksite 4x6	(All)	M125383	-	-	-	-	WE262030	CALL



**Severe Duty ATV/UTV Drive Belts**  
*The highest quality ATV / UTV belt available.*



Model	Year	Replaces OE	Severe Duty		Super Duty		Standard	
			Part #	Price (F)	Part #	Price (F)	Part #	Price (F)
<b>Kawasaki</b>								
300 Prairie 2x4 / 4x4	99-02	59011-1065	-	-	-	-	WE263020	\$71.37
360 Prairie 2x4 / 4x4	05-08	59011-0003	WE265010	\$142.80	WE262217	\$101.13	WE262017	\$71.37
360 Prairie 2x4 / 4x4	03-04	59011-1084	-	-	-	-	WE262019	\$71.37
400 Prairie 2x4 / 4x4	99-02	59011-1066	-	-	-	-	WE262021	\$71.37
520 / 550 Mule Series	-	59011-1071	-	-	-	-	WE262023	\$71.37
650 Brute Force 4x4	05-08	59011-0003	WE265010	\$142.80	WE262217	\$101.13	WE262017	\$71.37
650 Prairie 4x4	02-03	59011-0003	WE265010	\$142.80	WE262217	\$101.13	WE262017	\$71.37
700 KFX 2x4	03-08	59011-0003	WE265010	\$142.80	WE262217	\$101.13	WE262017	\$71.37
700 Prairie 4x4	04-06	59011-0003	WE265010	\$142.80	WE262217	\$101.13	WE262017	\$71.37
750 Brute Force 4x4	05-07	59011-0003	WE265010	\$142.80	WE262217	\$101.13	WE262017	\$71.37
750 Brute Force EFI 4x4i	08	59011-0003	WE265010	\$142.80	WE262217	\$101.13	WE262017	\$71.37
750 Teryx	08	59011-0019	WE265010	\$142.80	-	-	-	-
1000/2010/2020/2030 Mule	-	59011-1053	-	-	-	-	WE262024	\$71.37
3000/3010 Mule Series	-	59011-1077	-	-	-	-	WE262026	\$71.37
<b>Polaris</b>								
250 Trail Blazer 2x4	97-06	3211077	WE262020	\$142.80	WE262203	\$101.13	WE262003	\$71.37
250 Trail Blazer 2x4 w/ EBS	04-05	3211069	-	-	-	-	WE262002	\$71.37
250 Trail Boss 2x4	97-02	3211077	WE262020	\$142.80	WE262203	\$101.13	WE262003	\$71.37
250 Xplorer 4x4	00-02	3211077	WE262020	\$142.80	WE262203	\$101.13	WE262003	\$71.37
300 Xplorer 4x4	97-99	3211077	WE262020	\$142.80	WE262203	\$101.13	WE262003	\$71.37
300 Xpress 2x4	97-99	3211077	WE262020	\$142.80	WE262203	\$101.13	WE262003	\$71.37
325 Magnum 2x4 / 4x4	00-02	3211077	WE262020	\$142.80	WE262203	\$101.13	WE262003	\$71.37
325 Trail Boss 2x4	00-02	3211077	WE262020	\$142.80	WE262203	\$101.13	WE262003	\$71.37
330 ATP 4x4	04-05	3211077	WE262020	\$142.80	WE262203	\$101.13	WE262003	\$71.37
330 ATP 4x4 w/ EBS	04-05	3211069	-	-	-	-	WE262002	\$71.37
330 Magnum 2x4	03-05	3211077	WE262020	\$142.80	WE262203	\$101.13	WE262003	\$71.37
330 Magnum 2x4 w/ EBS	04-05	3211069	-	-	-	-	WE262002	\$71.37
330 Magnum 4x4	03/05-06	3211077	WE262020	\$142.80	WE262203	\$101.13	WE262003	\$71.37
330 Magnum 4x4 w/ EBS	04-05	3211069	-	-	-	-	WE262002	\$71.37
330 Trail Boss 2x4	03-08	3211077	WE262020	\$142.80	WE262203	\$101.13	WE262003	\$71.37
330 Trail Boss 2x4 w/ EBS	04-05	3211069	-	-	-	-	WE262002	\$71.37
335 Sportsman 4x4	99-00	3211077	WE262020	\$142.80	WE262203	\$101.13	WE262003	\$71.37
335 Worker 4x4	99	3211077	WE262020	\$142.80	WE262203	\$101.13	WE262003	\$71.37
400 Big Boss 6x6	97	3211077	WE262020	\$142.80	WE262203	\$101.13	WE262003	\$71.37
400 Scrambler 2x4	00-02	3211077	WE262020	\$142.80	WE262203	\$101.13	WE262003	\$71.37
400 Scrambler 4x4	97-00	3211077	WE262020	\$142.80	WE262203	\$101.13	WE262003	\$71.37
400 Sport 2x4	97-99	3211077	WE262020	\$142.80	WE262203	\$101.13	WE262003	\$71.37
400 Sportsman 4x4	97/01-05	3211077	WE262020	\$142.80	WE262203	\$101.13	WE262003	\$71.37
400 Sportsman 4x4 w/ EBS	04-05	3211069	-	-	-	-	WE262002	\$71.37
400 Trail Blazer 2x4	03	3211077	WE262020	\$142.80	WE262203	\$101.13	WE262003	\$71.37
400 Xplorer 4x4	97-02	3211077	WE262020	\$142.80	WE262203	\$101.13	WE262003	\$71.37
400 Xpress 2x4	97	3211077	WE262020	\$142.80	WE262203	\$101.13	WE262003	\$71.37
425 Magnum 2x4/4x4	97-98	3211077	WE262020	\$142.80	WE262203	\$101.13	WE262003	\$71.37
425 Magnum 6x6	97	3211077	WE262020	\$142.80	WE262203	\$101.13	WE262003	\$71.37
450 Sportsman 4x4	06-07	3211077	WE262020	\$142.80	WE262203	\$101.13	WE262003	\$71.37
500 ATP 4x4 w/ EBS	04-05	3211069	-	-	-	-	WE262002	\$71.37
500 Big Boss 6x6	98-99	3211077	WE262020	\$142.80	WE262203	\$101.13	WE262003	\$71.37
500 Magnum 4x4	00	3211077	WE262020	\$142.80	WE262203	\$101.13	WE262003	\$71.37
500 Magnum 4x4 w/ EBS	00-02	3211069	-	-	WE262204	\$101.13	-	-
500 Ranger 2x4 / 4x4	04-07	3211077	WE262020	\$142.80	WE262203	\$101.13	-	-
500 Ranger 6x6	04-05	3211077	WE262020	\$142.80	WE262203	\$101.13	-	-
500 Ranger EFI 4x4	06-08	3211077	WE262020	\$142.80	WE262203	\$101.13	-	-
500 Ranger	99	3211077	WE262020	\$142.80	WE262203	\$101.13	-	-
500 Scrambler 2x4	01-02	3211077	WE262020	\$142.80	WE262203	\$101.13	WE262003	\$71.37
500 Scrambler 4x4	97-08	3211077	WE262020	\$142.80	WE262203	\$101.13	WE262003	\$71.37
500 Scrambler 4x4 w/ EBS	04-05	3211069	-	-	WE262204	\$101.13	-	-
500 Sportsman EFI 4x4	08	3211113	WE263040	\$160.89	-	-	-	-
500 Sportsman EFI non EBS	07	3211077	WE262020	\$142.80	WE262203	\$101.13	WE262003	\$71.37
500 Sportsman EFI Std w/EBS	07	3211091	-	-	WE262204	\$101.13	-	-



## Severe Duty ATV/UTV Drive Belts

The highest quality ATV / UTV belt available.



Model	Year	Replaces OE	Severe Duty		Super Duty		Standard	
			Part #	Price (F)	Part #	Price (F)	Part #	Price (F)
500 Sportsman EFI w/ Dlx EBS	07	3211113	WE263040	\$160.89	-	-	-	-
500 Sportsman EFI 4x4	06-07	3211091	-	-	WE262204	\$101.13	-	-
500 Sportsman EFI Touring 4x4	08	3211113	WE263040	\$160.89	-	-	-	-
500 Sportsman EFI X2 4x4	07-08	3211113	WE263040	\$160.89	-	-	-	-
500 Sportsman HO Carb 4x4	06/08	3211077	WE262020	\$142.80	WE262203	\$101.13	WE262003	\$71.37
500 Sportsman HO 4x4	03-05	3211095	-	-	WE262204	\$101.13	-	-
500 Sportsman HO/DUSE 4x4	01-02	3211077	WE262020	\$142.80	WE262203	\$101.13	WE262003	\$71.37
500 Sportsman HO/DUSE 4x4 w/ EBS	01-02	3211069	-	-	WE262204	\$101.13	-	-
500 Sportsman 4x4	96-98/00	3211077	WE262020	\$142.80	WE262203	\$101.13	WE262003	\$71.37
500 Sportsman 4x4 w/ EBS	00-02	3211069	-	-	WE262204	\$101.13	-	-
500 Sportsman 6x6	00-08	3211077	WE262020	\$142.80	WE262203	\$101.13	WE262003	\$71.37
500 Sportsman X2 4x4	06	3211091	-	-	WE262204	\$101.13	-	-
500 Worker 4x4	01	3211077	WE262020	\$142.80	WE262203	\$101.13	WE262003	\$71.37
500 Xplorer 4x4	97	3211077	WE262020	\$142.80	WE262203	\$101.13	WE262003	\$71.37
600 Sportsman 4x4 w/ EBS	03-05	3211091	-	-	WE262204	\$101.13	-	-
700 Ranger Crew	08	3211118	WE262020	\$142.80	-	-	-	-
700 Ranger EFI 6x6	06-07	3211106	WE262020	\$142.80	WE262203	\$101.13	-	-
700 Ranger XP 4x4	08-09	3211118	WE262020	\$142.80	-	-	-	-
700 Ranger XP 4x4	05-06	3211106	WE262020	\$142.80	WE262203	\$101.13	-	-
700 Sportsman 4x4	06	3211091	-	-	WE262204	\$101.13	-	-
700 Sportsman 4x4 w/ EBS	02-05	3211091	-	-	WE262204	\$101.13	-	-
700 Sportsman EFI 4x4	06	3211091	-	-	WE262204	\$101.13	-	-
700 Sportsman EFI 4x4 w/ EBS	04-05	3211091	-	-	WE262204	\$101.13	-	-
700 Sportsman EFI X2 4x4	08	3211113	WE263040	\$160.89	-	-	-	-
700 MV7 4x4	05	3211091	-	-	WE262204	\$101.13	-	-
800 RZR 4x4	08-09	3211113	WE263040	\$160.89	-	-	-	-
800 Sportsman EFI 4x4	05-06	3211106	WE262020	\$142.80	WE262237	\$101.13	-	-
800 Sportsman EFI	07-08	3211113	WE263040	\$160.89	-	-	-	-
Diesel w/ EBS	01	3211069	-	-	-	-	WE262002	\$71.37
All (non-EBS)	99	3211077	WE262020	\$142.80	WE262203	\$101.13	WE262003	\$71.37
All	94-98	3211077	WE262020	\$142.80	WE262203	\$101.13	WE262003	\$71.37
<b>Suzuki</b>								
400 Eiger Auto	03-07	27601-38F00	-	-	-	-	WE262027	\$71.37
500 Vinson Auto	00-07	27601-09F60	WE263030	\$142.80	-	-	WE262032	\$71.37
700 King Quad	05-07	27601-31G00	-	-	WE262234	\$101.13	-	-
700 Twin Peaks	04-06	K5901-10003	WE265010	\$142.80	WE262217	\$101.13	-	-
750 King Quad AXi 4x4	08	27601-31G00	-	-	WE262234	\$101.13	-	-
<b>Yamaha</b>								
350 Bruin Auto 2x4	04-06	5UH-17641-00-00	-	-	WE262218	\$101.13	-	-
350 Bruin Auto 4x4	04-07	5UH-17641-00-00	-	-	WE262218	\$101.13	-	-
350 Grizzly Auto 4x4	07-08	5UH-17641-00-00	-	-	WE262218	\$101.13	-	-
400 Grizzly Auto 4x4	07	5GH-17641-00-00	-	-	-	-	WE262005	\$71.37
400 Kodiak Auto 4x4	00-06	5GH-17641-00-00	-	-	-	-	WE262005	\$71.37
450 Grizzly Auto 4x4	07	5GH-17641-00-00	-	-	-	-	WE262005	\$71.37
450 Kodiak Auto 4x4	01-06	5GH-17641-00-00	-	-	-	-	WE262005	\$71.37
600 Grizzly Auto 4x4	98-01	4WV-17641-00-00	WE261020	\$142.80	-	-	-	-
660 Grizzly Auto 4x4	02-08	5KM-17641-00-00	WE261010	\$142.80	WE262233	\$101.13	-	-
660 Rhino 4x4	04-07	5KM-17641-00-00	WE261010	\$142.80	WE262233	\$101.13	-	-
700 Grizzly Auto 4x4	07-09	3B4-17641-00-00	WE261010	\$142.80	WE262233	\$101.13	-	-
700 Rhino FI 4x4	08-09	3B4-17641-00-00	WE261010	\$142.80	WE262233	\$101.13	-	-